

NOTES:

FASTENERS:
 CEILING AND SIDING: NAIL 3/8" PLYWOOD WITH NON-CORROSIVE 6d COMMON NAIL SPACED 6" O.C. ALONG PANEL EDGES AND 12" O.C. OVER INTERMEDIATE SUPPORTS WITH TRUSSES SPACED 32" O.C. INSTALL PLY CLIPS TO SUPPORT LONG EDGES OF PLYWOOD CEILING PANELS

SHEATHING
 APPLY 1/2" PLYWOOD WITH 6d COMMON NAILS, SPACED 6" O.C. ALONG PANEL EDGES AND 12" O.C. OVER INTERMEDIATE SUPPORTS. IDENTIFICATION INDEX FOR SHEATHING-32/16
 ALL PLYWOOD IS EXTERIOR-TYPE PLYWOOD (EXT.-DFPA)

PANELIZED CONSTRUCTION IS INDICATED ON THE PLAN. CONVENTIONAL ON-SITE CONSTRUCTION USING 2" X 4" STUDS, 24" O.C. CAN BE SUBSTITUTED.

TRUSSES:
 LUMBER: TOP CHORD-2" X 6"
 BOTTOM CHORD-2" X 4"
 ALLOWABLE FIBER STRESS
 BENDING - 1500 PSI
 COMPRESSION - 1200 PSI

PLYWOOD GUSSETS:
 1/2" - 32/16 C-C EXT TYPE DFPA PLYWOOD ON BOTH SIDES OF FRAMING MEMBERS
 GLUE: RESORCINOL-RESIN TYPE

NOTE:
 CONSULT LOCAL HEALTH AUTHORITIES BEFORE STARTING CONSTRUCTION TO BE SURE THAT THE PLAN CONFORMS WITH LOCAL CODES AND REGULATIONS

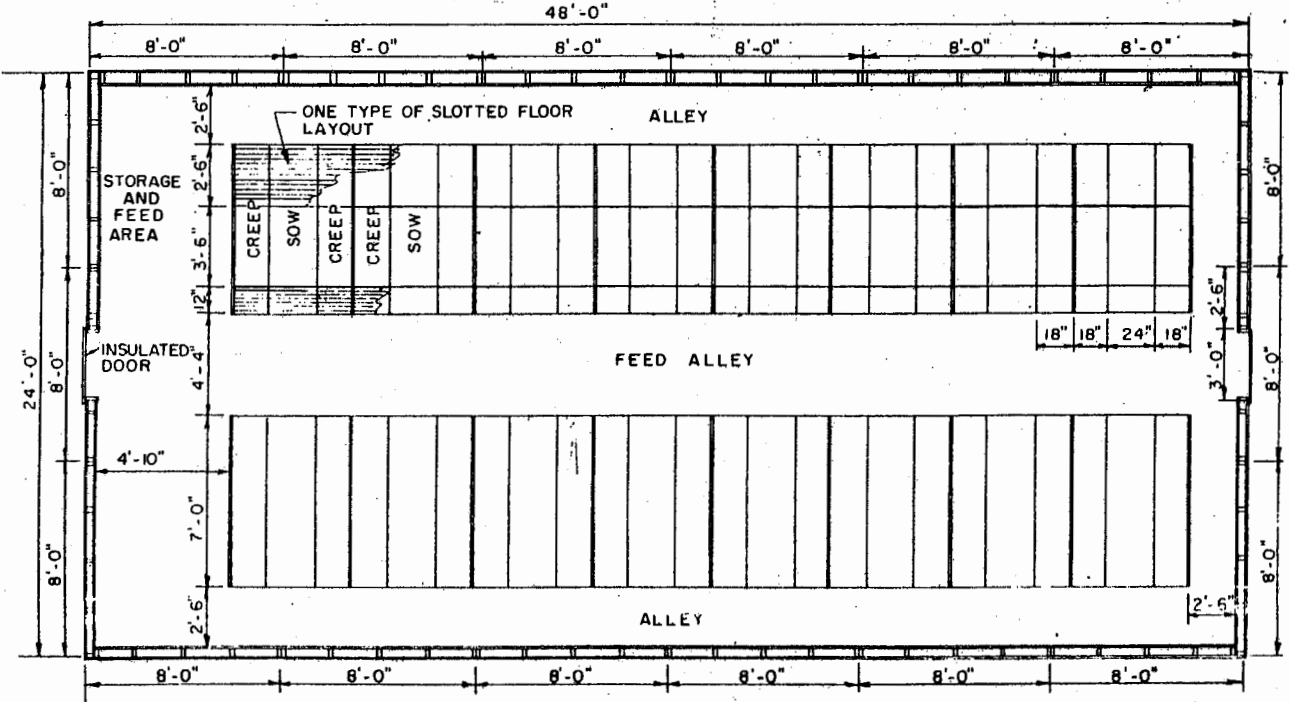
SLOTTED FLOORS:
 SEVERAL ARRANGEMENTS ARE POSSIBLE. TWO ARE INDICATED.

VENTILATION, HEATING & ELECTRIC SERVICE
 CONSULT WITH POWER SUPPLIER AND/OR EQUIPMENT

FARROWING STALLS
 COMMERCIALY AVAILABLE STALLS MAY BE USED OR SEE SHEET #3, DETAIL FOR PLYWOOD FARROWING STALL.

PIT CLEANOUT ACCESS
 PLACE ACCESS PORT AT CONVENIENT LOCATION

SECTION



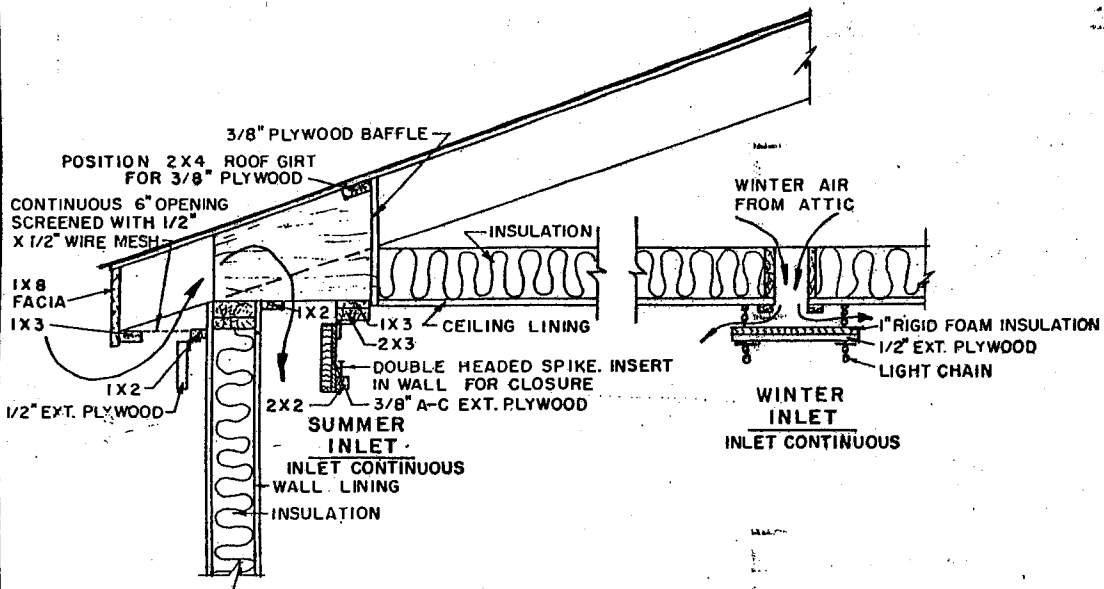
FLOOR PLAN

AMERICAN PLYWOOD ASSOC.
 FORM NO. 70-170 & 70-175

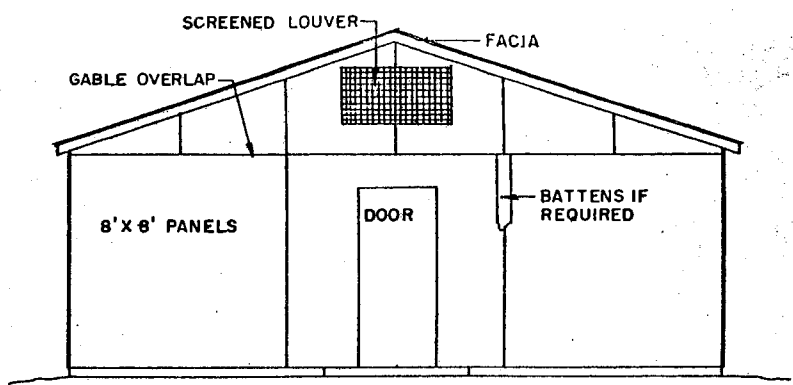


FARROWING HOUSE
 24 x 48

| | | | |
|-----|-----|------|--------------|
| APA | '71 | 6122 | SHEET 1 OF 3 |
|-----|-----|------|--------------|

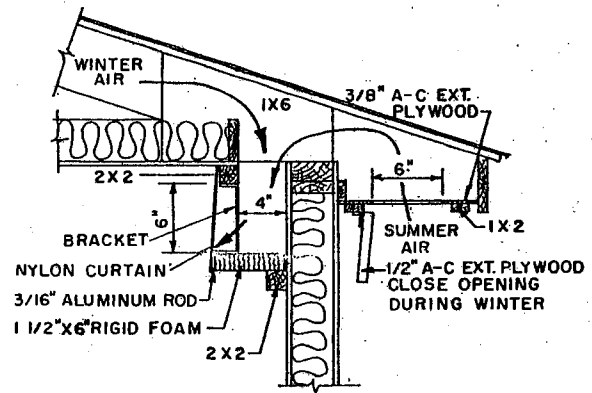


VENTILATION INLET SYSTEM, ALTERNATE NO. 1

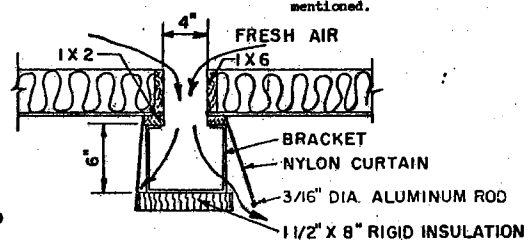


- SIDING OPTIONS, (ALL SIDING 3/8" EXT. TYPE DFPA PLYWOOD)
 1. MEDIUM DENSITY OVERLAY, PREMIUM PERFORMANCE AS PAINTED PANEL.
 2. A-C OR B-C EXT. SANDED, FINISH SUITABLE FOR PAINTING.
 3. C-C EXT. ROUGH FINISH, SUITABLE FOR STAIN APPLICATION.

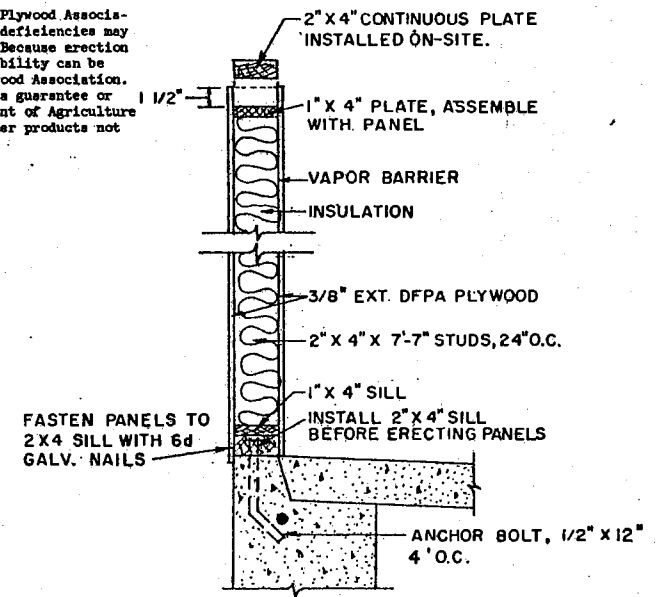
This design is based on the use of American Plywood Association Grade-Trademarked plywood. Structural deficiencies may result with the substitution of materials. Because erection of the structure cannot be supervised no liability can be assumed by the designer or the American Plywood Association. Mention of a trade name does not constitute a guarantee or warranty of the product by the U.S. Department of Agriculture or an endorsement by the Department over other products not mentioned.



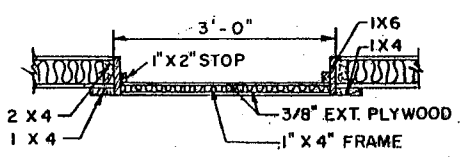
SLOT INLET ON SIDE.
 VENTILATION INLET SYSTEM, ALTERNATE NO. 2
 INLETS ARE CONTINUOUS



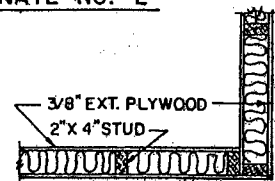
SLOT INLET IN CENTER



WALL PANEL DETAIL



DOOR DETAIL



CORNER DETAIL

PANEL DETAILS

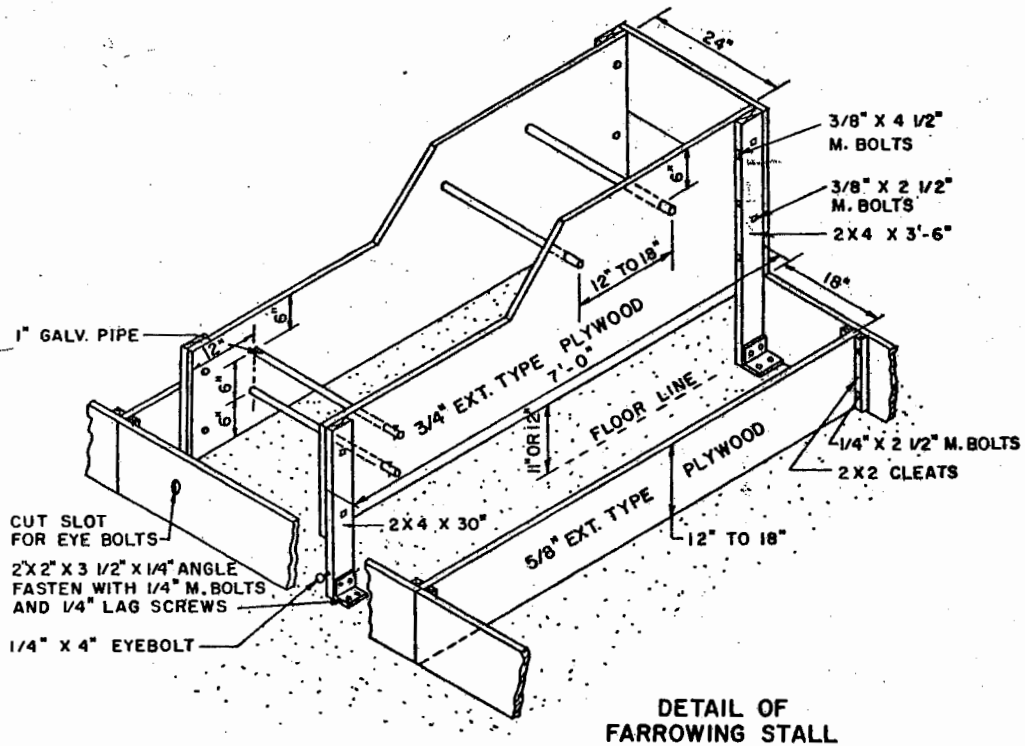
THE PLYWOOD USE RECOMMENDATIONS CONTAINED IN THIS PUBLICATION ARE BASED UPON THE ASSOCIATION'S CONTINUING PROGRAM OF LABORATORY TESTING, PRODUCT RESEARCH AND COMPREHENSIVE FIELD EXPERIENCE.

BEST PERFORMANCE DEPENDS UPON THE USE OF QUALITY PLYWOOD, IDENTIFIED BY AMERICAN PLYWOOD ASSOCIATION GRADE-TRADEMARKS, PROPERLY APPLIED IN ACCORDANCE WITH THESE RECOMMENDATIONS.

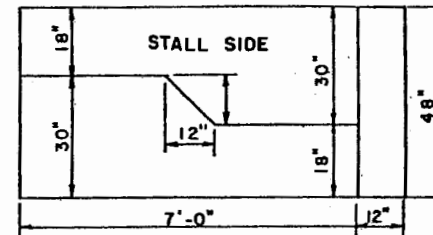
LSU
Ag Center
 RESEARCH & EXTENSION

FARROWING HOUSE
 24'x48'

| | | | |
|-----|-----|------|--------------|
| APA | '71 | 6122 | SHEET 2 OF 3 |
|-----|-----|------|--------------|



DETAIL OF
FARROWING STALL



PLYWOOD CUTTING DIAGRAM
3/4" EXT. TYPE PLYWOOD

MATERIALS LIST

| | |
|--------------------------------------|-------------------------------------------------------------------------------------------------------------------------------------------------------------------------------------------------------------------------------------------------------------------------|
| PLYWOOD | ALL EXTERIOR-TYPE (EXT.-DFPA) C-C GRADE ALTERNATE—PLYFORM OR A-C EXT. |
| STALL SIDES | 1—4' X 8' X 3/4" |
| STALL END | 1—2'-4 1/2" X 2'-6" X 3/4" |
| DIVIDER PARTITIONS (12" HIGH) | 1—4' X 8' X 5/8" |
| LUMBER | 2—2X6 X 6' 1—2X2 X 10' |
| HARDWARE | 10' 1" GALV. PIPE 8—3/8" X 2 1/2" MACHINE BOLT 16—1/4" X 2 1/2" " " " 8—3/8" X 4 1/2" " " " 8—1/4" X 2" " " " 2—1/4" X 4" EYE BOLT 4—3 1/2" X 2" X 2" X 1/4" ANGLE BRACKETS 8—1/4" X 2" LAG BOLTS WITH EXPANSION SHIELDS 8—COTTER PINS OR NAILS |



FARROWING HOUSE
24x48

APA '71 6122 SHEET 3 OF 3

Disclaimer

This site makes available conceptual plans that can be helpful in developing building layouts and selecting equipment for various agricultural applications. These plans do not necessarily represent the most current technology or construction codes. They are not construction plans and do not replace the need for competent design assistance in developing safe, legal and well-functioning agricultural building system. The LSU Agriculture Center, the Mid-West Plan Service, the United States Department of Agriculture and none of the cooperating land-grant universities warranty these plans.