

Meat and Fish Fun Facts



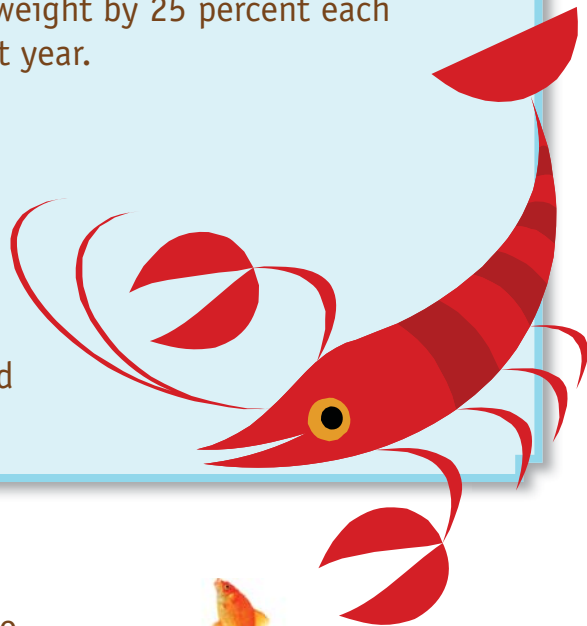
LOBSTER

As a **lobster** grows, it sheds its shell, increasing in weight by 25 percent each time, and a lobster will shed its shell 24 times the first year.

A lobster will catch fish, other crustaceans and mollusks for their food.

A lobster will commonly store food by burying it on the bottom of the ocean and defending the area much like a dog.

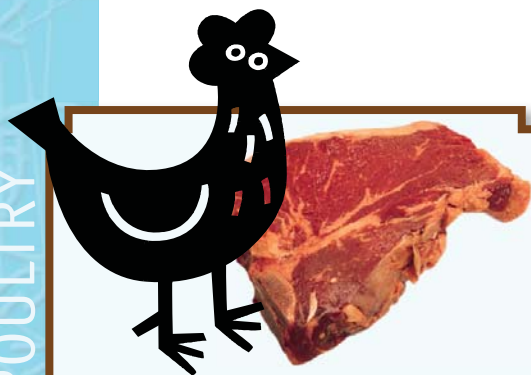
A lobster's age is approximately its weight multiplied by 4, plus 3 years.



Do fish sleep?

FISH

Yes and no. Most **fish** don't have eyelids, so technically they cannot close their eyes to sleep; they eat and swim during the 24-hour day cycle and are inactive at night. Some fish are always semi-resting (daydreaming) as they pass virtually their whole lives motionless.



MEAT/POULTRY

Americans consumed **66 pounds of red meat** and **87 pounds of poultry** per person in the year 2006.

Fish don't have ears, right?

Fish actually have ears (ear-holes) in their heads, but they don't work very well. Instead, they "hear" from a line of sensitive receptors located on both sides of the body. Fish are able to observe water current and motions in the surroundings, including the movement of fish and other animals nearby.



EGGS A hard-cooked egg spins, but a soft-cooked or raw egg does not.



Bacon is one of the oldest meats in history; the Chinese were preserving and salting pork bellies around 1500 B.C.

While heavy on salt and somewhat high in calories, bacon has no trans fat.



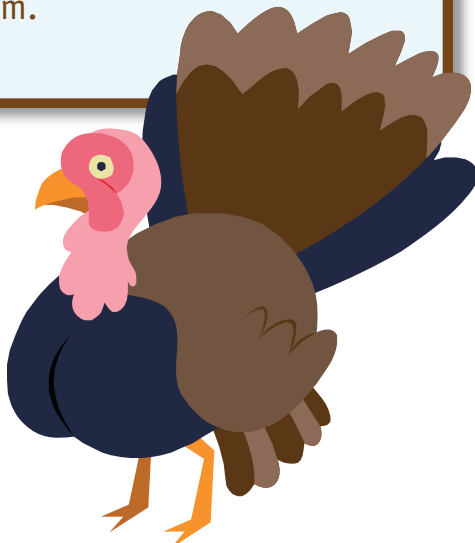
PORK

Can turkeys fly?

Some **turkeys** CAN fly. Wild turkeys can fly for short distances up to 55 mph and can run up to 20 mph, but domesticated turkeys stick to the ground because they can't fly.

Male turkeys are the only turkeys that gobble. Female turkeys make a clicking noise.

The largest turkey in the world weighed in at 86 pounds. It was raised by Leacroft Turkeys Ltd. in Petersborough, United Kingdom.



TURKEYS

TOP FOODS The *National Restaurant Association* reports that the top foods eaten in restaurants last year were **hamburgers, steak and roast beef.**



Author:
Heli Roy, PhD, RD Associate Professor

Visit our Web site: www.lsuagcenter.com

Louisiana State University Agricultural Center, William B. Richardson, Chancellor
Louisiana Agricultural Experiment Station, David Boethel, Vice Chancellor and Director
Louisiana Cooperative Extension Service, Paul D. Coreil, Vice Chancellor and Director
Pub. 3032 (20M) 1/08

Issued in furtherance of Cooperative Extension work, Acts of Congress of May 8 and June 30, 1914, in cooperation with the United States Department of Agriculture. The Louisiana Cooperative Extension Service provides equal opportunities in programs and employment. This institution is an equal opportunity provider.

This material was funded by USDA's Food Stamp program. The Food Stamp program provides nutrition assistance to people with low income. It can help you buy nutritious foods for a better diet. To find out more, contact your local Extension office or visit www.lsuagcenter.com