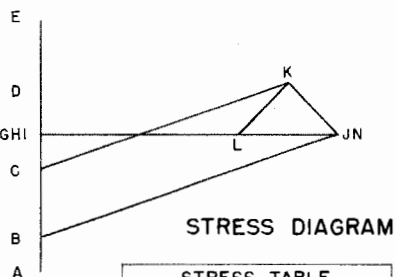


DIMENSIONS OF MEMBERS

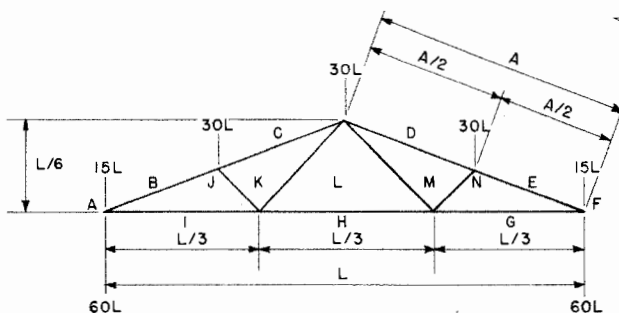
SPAN	TOP CHORD					LOWER CHORD			LONG DIAG.	SHORT DIAG.	SPAN	LUMBER LIST							HARDWARE LIST PER TRUSS		
	L	A	B	C	D	E	F	G	H	I		TOP CHORD	LOWER CHORD	LONG DIAGONAL	SHORT DIAGONAL	SCABS	B.F.M.	SPAN	ITEM	NO. PCS.	SIZE
24'	12'-8"	12'-9 1/8"	6'-1 5/8"	3 5/8"	5"	5"	8'-1"	3'-7"	5'-8 5/8"	2'-7 7/16"	24'	2-2"x6"x14'	2-2"x4"x14'	2-2"x4"x7'	2-2"x4"x3'	4-1"x4"x18"	62	24'	SPLIT RINGS (2)	13	2 1/2" DIA.
30'	15'-10"	15'-11 1/2"	7'-9 5/8"	3 5/8"	5"	5"	10'-1"	3'-7" OR 5'-7" (1)	7'-1 5/8"	3'-4 5/16"	30'	2-2"x6"x18'	1-2"x4"x18' 1-2"x4"x16'	2-2"x4"x8'	2-2"x4"x4'	4-1"x4"x18"	78	30'	CARRIAGE BOLTS	6 2	1/2"x4" 1/2"x6" 1/2"x7 1/2"
36'	19'-0"	19'-2 3/4"	9'-5 1/4"	5"	6"	6"	12'-2 1/2"	5'-7"	8'-7 1/4"	4'-0 13/16"	36'	2-2"x8"x22'	2-2"x4"x20'	2-2"x4"x10'	2-2"x4"x5'	4-1"x4"x18"	108	36'	WASHERS	9	1/2"
40'	21'-1"	21'-4 1/8"	10'-6 1/4"	5"	6"	6"	13'-6 1/4"	6'-3"	9'-6 5/8"	4'-6 1/16"	40'	2-2"x8"x24'	2-2"x4"x22'	2-2"x4"x11'	2-2"x4"x5'	2-1"x4"x18"	118	40'	NAILS	1/3 lb.	8d

TRUSS SPACING 4'-0" O.C.
DEAD LOAD AND LIVE LOAD = 30 P.S.F.

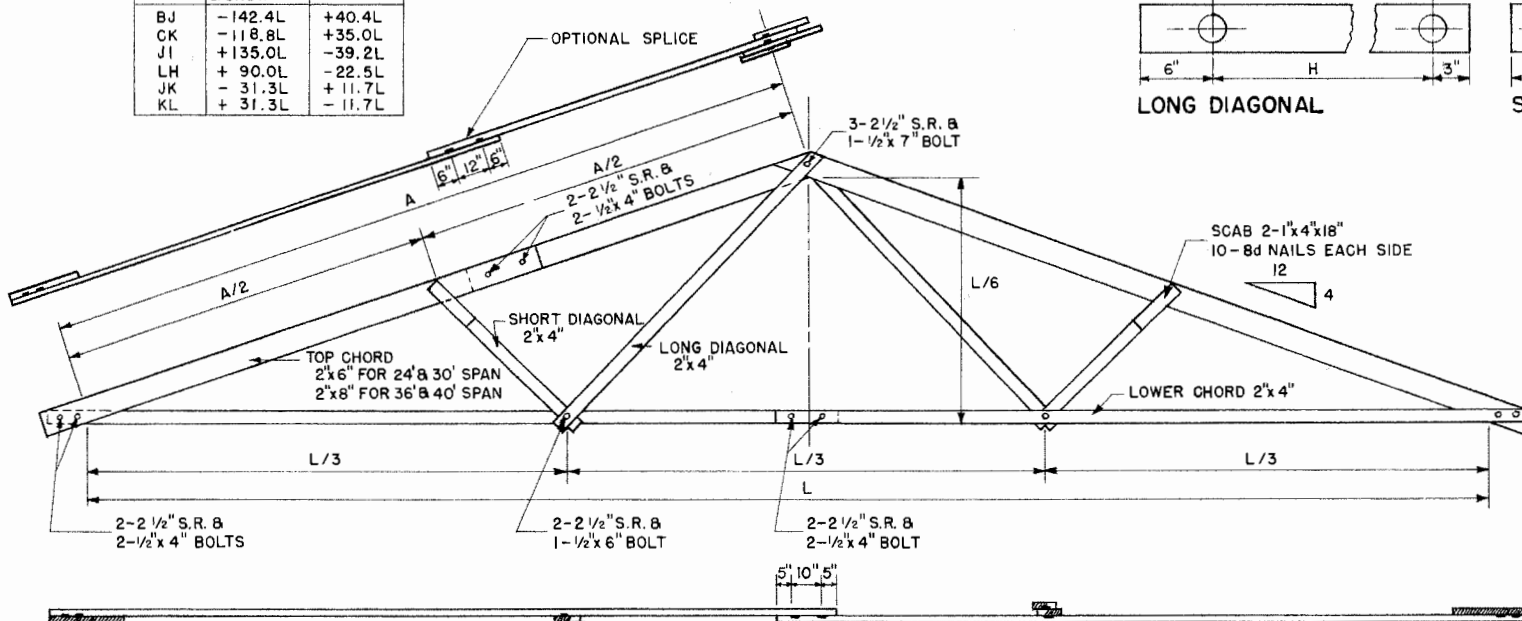
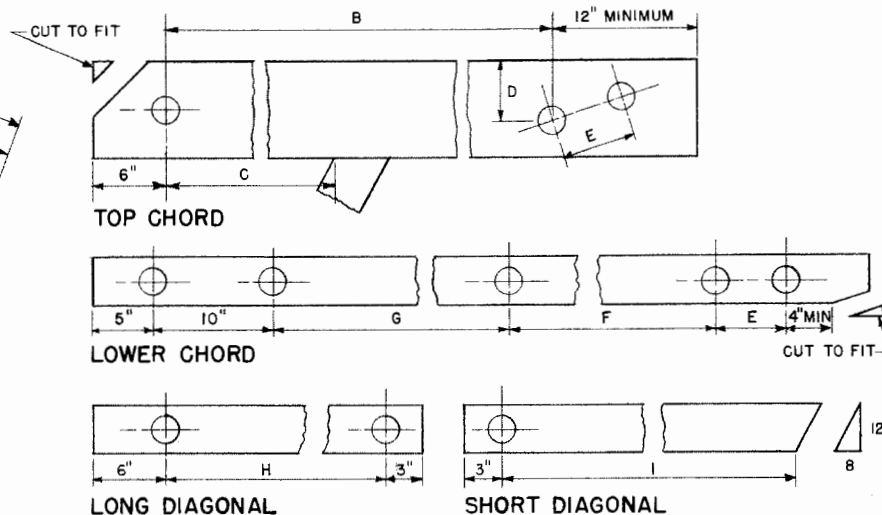


STRESS DIAGRAM

MEMBER	DEAD LOAD & SNOW	WIND LOAD
BJ	-142.4L	+40.4L
CK	-118.8L	+35.0L
JL	+135.0L	-39.2L
LH	+90.0L	-22.5L
JK	-31.3L	+11.7L
KL	+31.3L	-11.7L



LOADING DIAGRAM



TRUSS ELEVATION



SPLIT RING TRUSSES
24' TO 40' SPANS

Disclaimer

This site makes available conceptual plans that can be helpful in developing building layouts and selecting equipment for various agricultural applications. These plans do not necessarily represent the most current technology or construction codes. They are not construction plans and do not replace the need for competent design assistance in developing safe, legal and well-functioning agricultural building system. The LSU Agriculture Center, the Mid-West Plan Service, the United States Department of Agriculture and none of the cooperating land-grant universities warranty these plans.