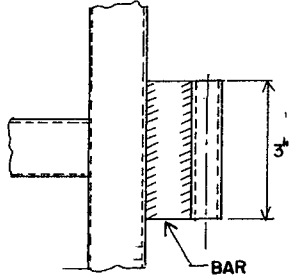
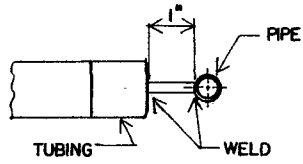
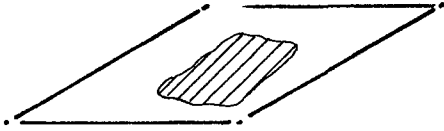
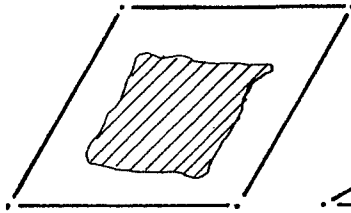
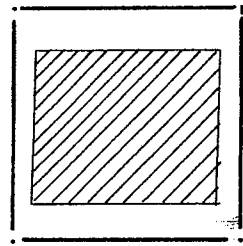
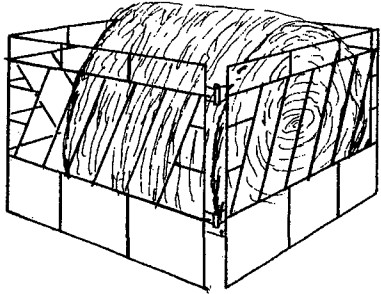
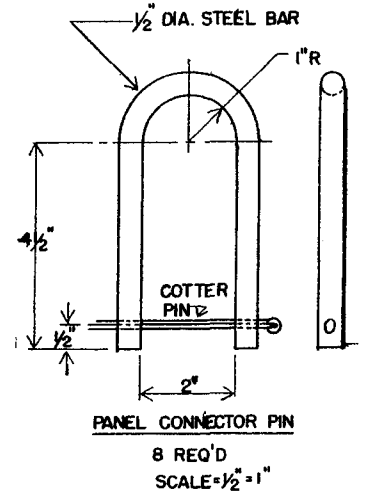
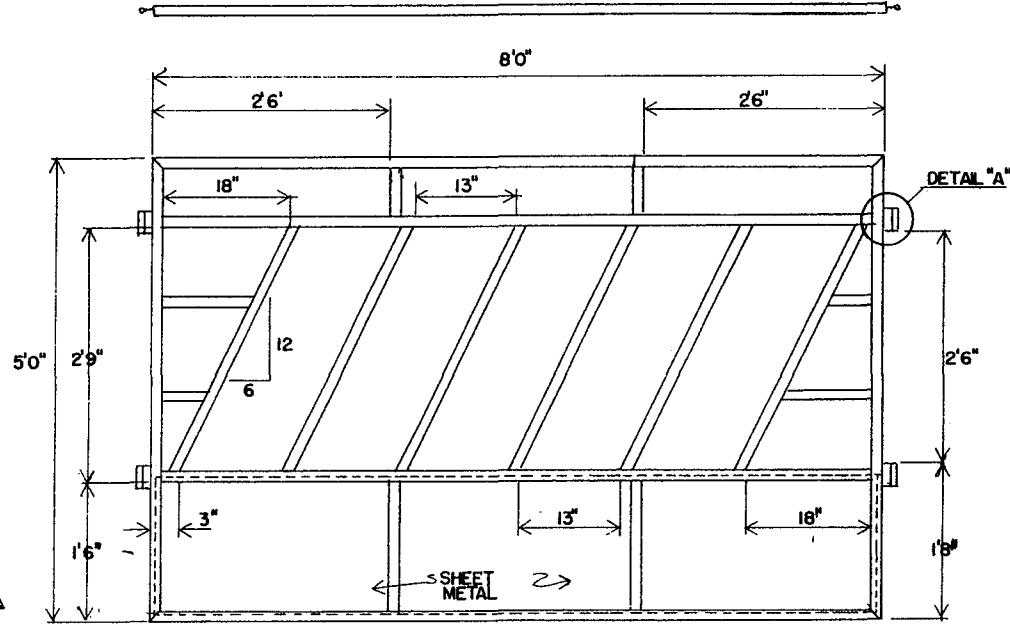
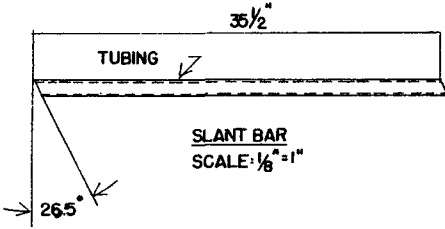


BILL OF MATERIALS FOR 4 PANELS	QTY.
1 1/4" x 16 GA. (065") SQUARE TUBING	270'
18" x 20 GA. (0359") SHEET STEEL	32'
3" x 1/4" STEEL BAR	1'-4"
1/2" DIA. PIPE	4'-0"
1/2" DIA. STEEL BAR	9'-0"



DETAIL "A"
SCALE: 1/2" = 1"



PINNED CORNER CONNECTIONS ALLOW PANELS TO COLLAPSE, THUS PROVIDING

NOTE: 1 DIA x 16 GA. (065")
ROUND TUBING MAY BE SUB-
STITUTE FOR THE SQUARE
TUBING.

**LSU
AgCenter**
Research & Extension

SLANT BAR FEEDER PANELS

ENGINEER OKLA. 73	SCALE
DRAWN BY	SHEET 1 OF 1
TRACED BY D.D.	DATE 10-74, NO. 50-8

Disclaimer

This site makes available conceptual plans that can be helpful in developing building layouts and selecting equipment for various agricultural applications. These plans do not necessarily represent the most current technology or construction codes. They are not construction plans and do not replace the need for competent design assistance in developing safe, legal and well-functioning agricultural building system. The LSU Agriculture Center, the Mid-West Plan Service, the United States Department of Agriculture and none of the cooperating land-grant universities warranty these plans.