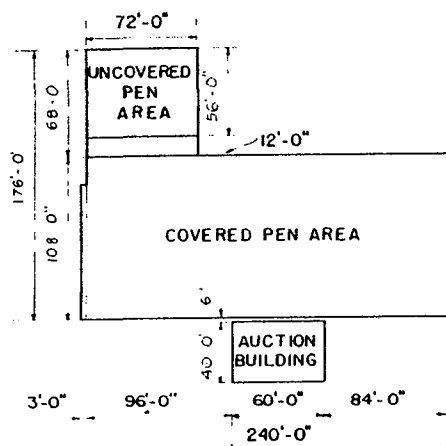
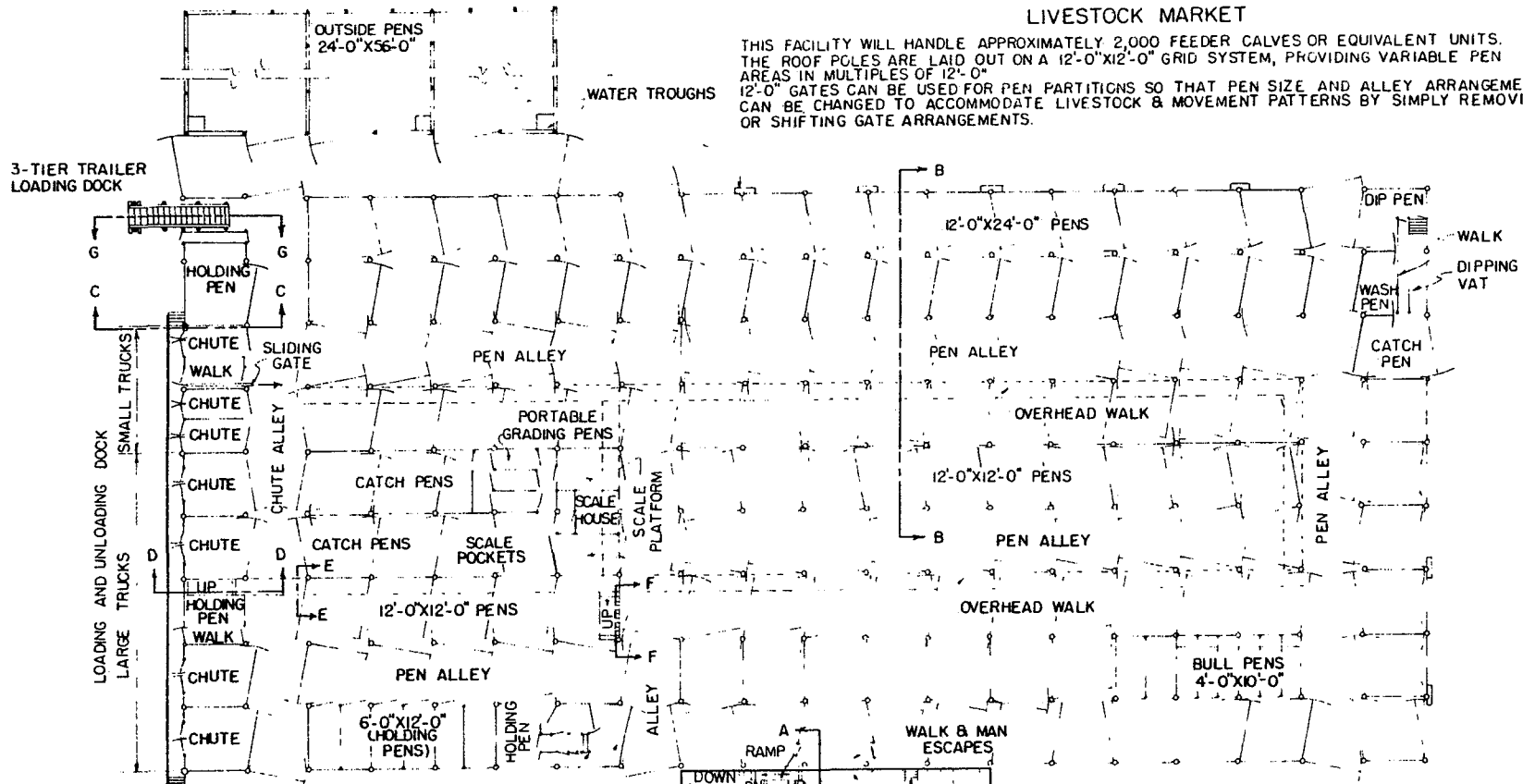
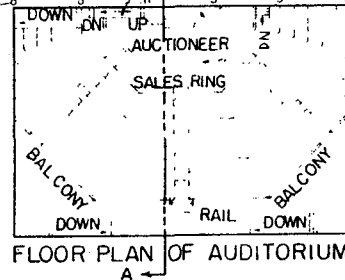


# LIVESTOCK MARKET

THIS FACILITY WILL HANDLE APPROXIMATELY 2,000 FEEDER CALVES OR EQUIVALENT UNITS. THE ROOF POLES ARE LAID OUT ON A 12'-0"X12'-0" GRID SYSTEM, PROVIDING VARIABLE PEN AREAS IN MULTIPLES OF 12'-0". 12'-0" GATES CAN BE USED FOR PEN PARTITIONS SO THAT PEN SIZE AND ALLEY ARRANGEMENTS CAN BE CHANGED TO ACCOMMODATE LIVESTOCK & MOVEMENT PATTERNS BY SIMPLY REMOVING OR SHIFTING GATE ARRANGEMENTS.

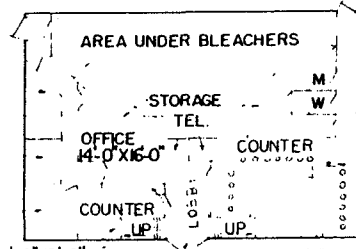


PLOT PLAN  
SCALE: 1"=60'-0"



FLOOR PLAN OF AUDITORIUM

VETERINARIAN OFFICE  
7'-0"X10'-0"  
PRIVATE BATH  
7'-0"X8'-0"  
MANAGERS OFFICE  
10'-0"X10'-0"



FLOOR PLAN OF FIRST FLOOR

## NOTES:

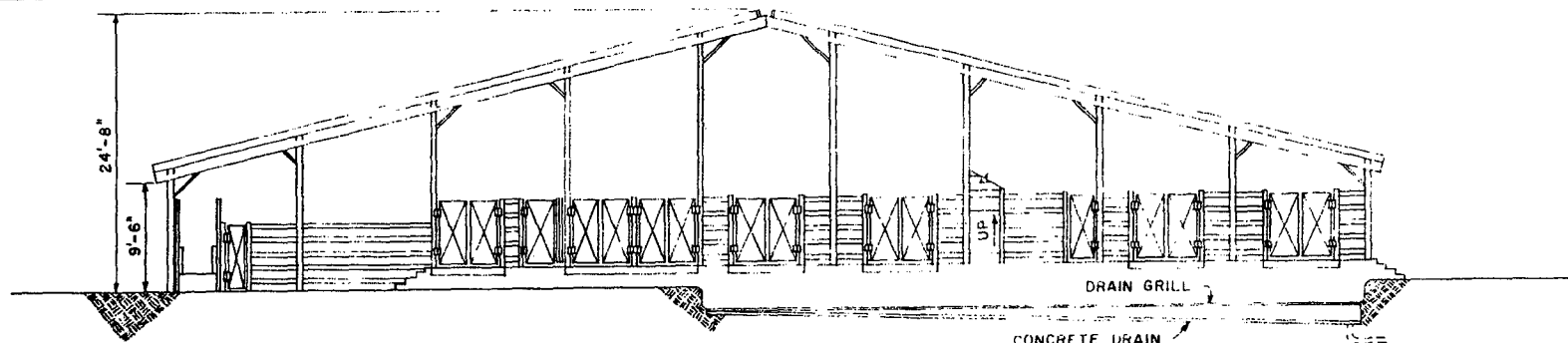
- 1) ALL ALLEYS ARE 12'-0" WIDE.
- 2) NUMBER AND SIZE OF PENS:  
HOLDING PENS: 16, 12'-0"X24'-0", 54, 12'-0"X12'-0"; 8, 6'-0"X12'-0"  
BULL PENS: 6, 4'-0"X10'-0"  
OUTSIDE PENS: 3, 24'-0"X56'-0"
- 3) GATES ON SIDES OF 12'-0" & 24'-0" PENS PROVIDE MEANS FOR EASY MECHANICAL CLEANING.
- 4) AUDITORIUM SEATING CAPACITY, APPROX. 300.
- 5) CHECK LOCAL & STATE ZONING, HEALTH & POLLUTION CODES BEFORE CONSTRUCTION OF ANIMAL FACILITY.
- 6) ALL POLES AND OTHER WOOD IN CONTACT WITH THE GROUND OR MANURE TO BE TREATED WITH PRESERVATIVE.

SCALE: 1/16"=1'-0"  
(UNLESS NOTED)

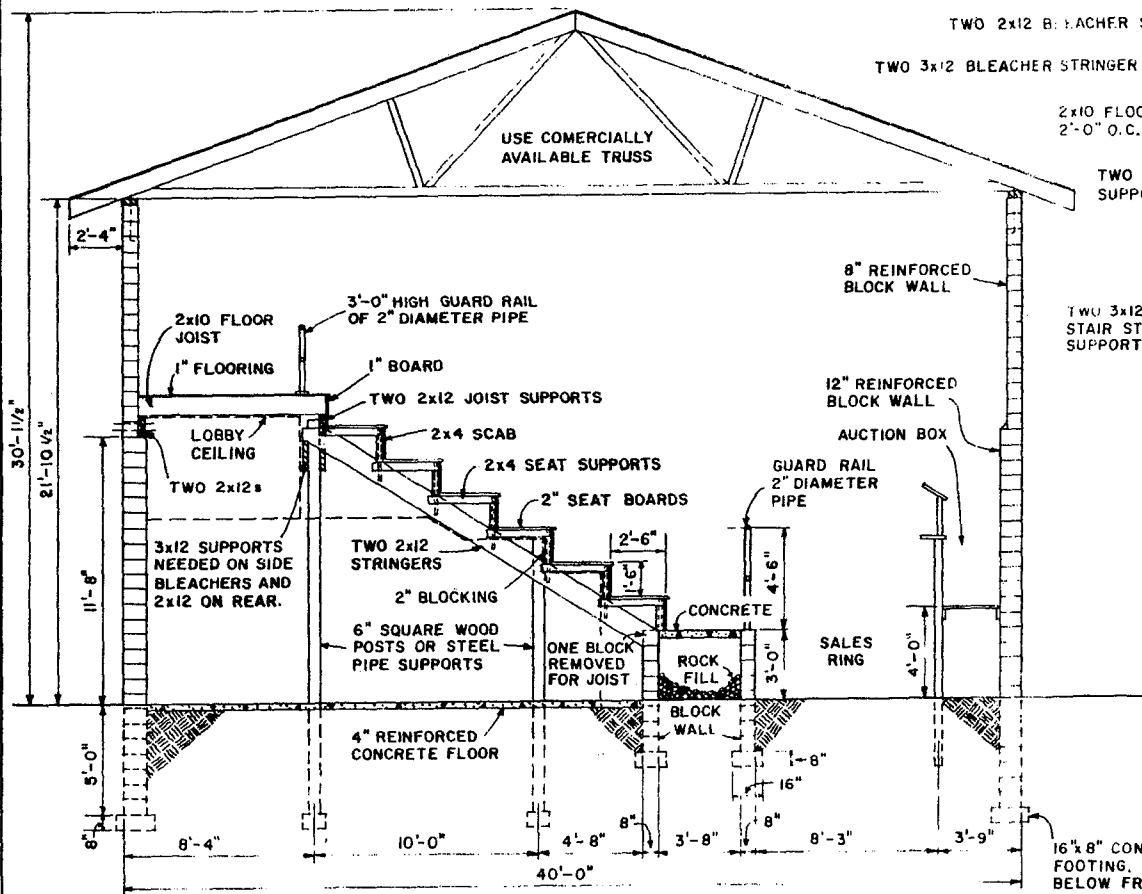


## LIVESTOCK MARKET

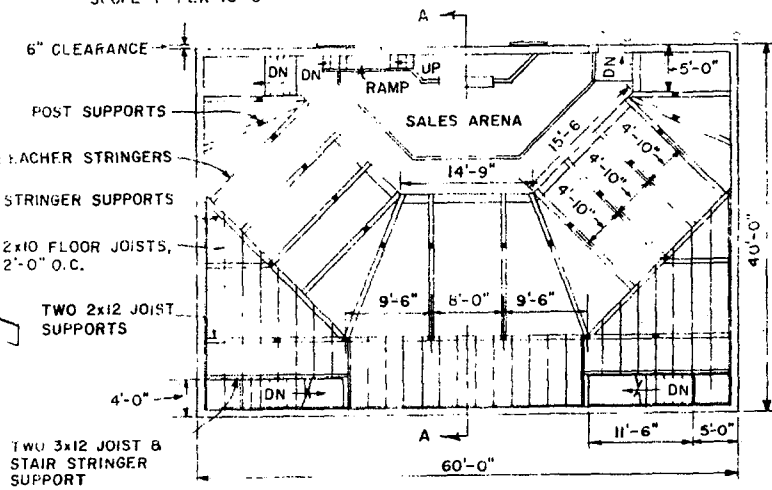
ENGINEER	SCALE
DRAWN BY W VA (71)	SHEET 1 OF 6
TRACED BY	DATE '71 NO. 6129



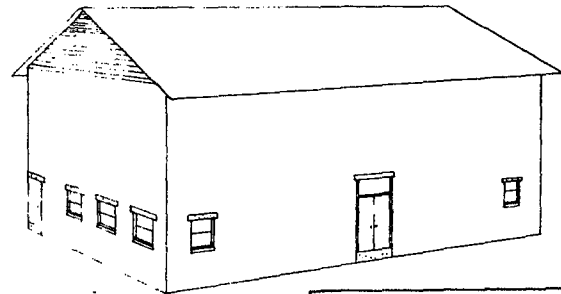
**END ELEVATION**  
LOADING AND UNLOADING DOCK  
SCALE: 1/8"=1'-0"



**SECTION A-A**  
SCALE: 1/4"=1'-0"



**AUDITORIUM**  
LOCATION OF BLEACHER & JOIST SUPPORTS  
SCALE: 1"=10'-0"

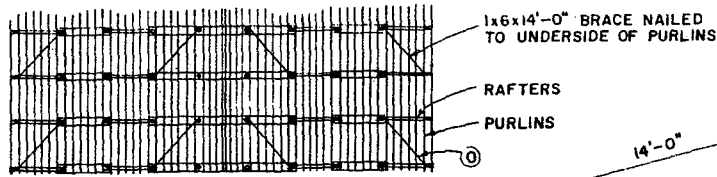


**PERSPECTIVE OF AUCTION BUILDING**

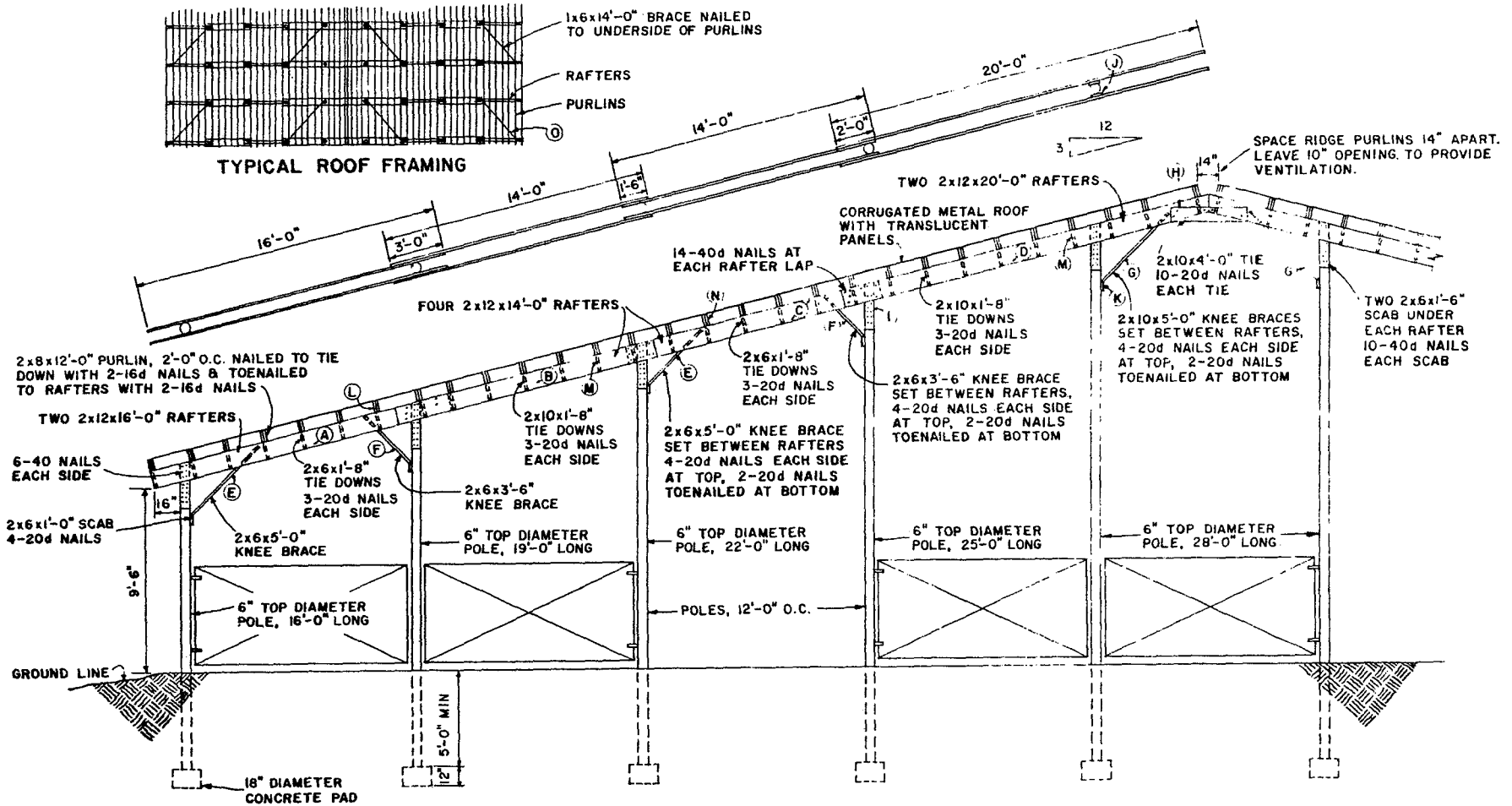


**LIVESTOCK MARKET**

W VA	71	<b>6129</b>	SHEET 2 OF 6
------	----	-------------	--------------



TYPICAL ROOF FRAMING



SECTION B-B

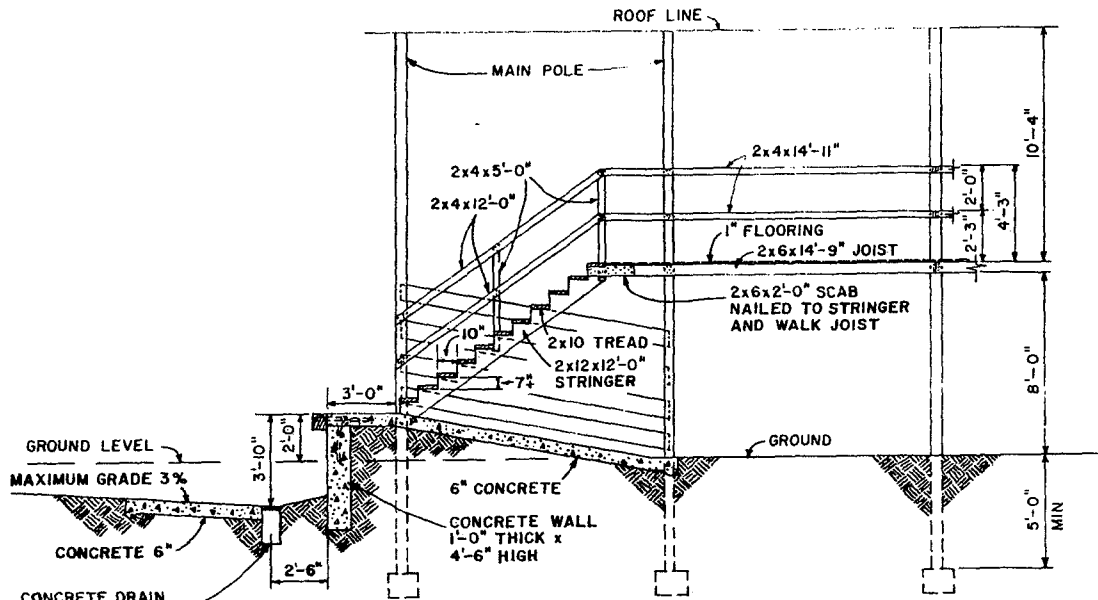
SCALE: 1/4"=1'-0"

KEY	MEMBER	CUT SIZE	NO.	FULL SIZE	NO.	FBM	TOTAL FBM FOR ROOF INCLUDING PURLINS
A	RAFTER	-	4	2x12x16'-0"	4	128	21 RAFTERS x 764 FBM / RAFTER 16,044
B	RAFTER	-	4	2x12x14'-0"	4	112	N PURLIN 2x8x12'-0"x1160 18,560
C	RAFTER	-	4	2x12x14'-0"	4	112	O ROOF BRACE 1x6x14'-0"x44 308
D	RAFTER	-	4	2x12x20'-0"	4	160	TOTAL FBM 34,912
E	KNEE BRACE	2x6x5'-0"	4	2x6x18'-0"	2	36	
F	KNEE BRACE	2x6x3'-6"	4	2x6x18'-0"	2	36	
G	KNEE BRACE	2x10x5'-0"	2	2x10x18'-0"	1	30	
H	RIDGE TIE	2x10x4'-0"	2	2x10x18'-0"	1	30	
I	RAFTER SCAB	2x10x1'-6"	20	2x6x16'-0"	2	32	
J	RAFTER SPACER	2x6x2'-6"	4	2x6x10'-0"	1	10	
K	BRACE SCAB	2x6x1'-0"	10	2x6x10'-0"	1	10	
L	PURLIN TIE DOWN	2x6x1'-8"	30	2x6x10'-0"	5	50	
M	PURLIN TIE DOWN	2x10x1'-8"	28	2x10x10'-0"	5	84	
TOTAL LUMBER FOR ONE FULL RAFTER						764	FBM

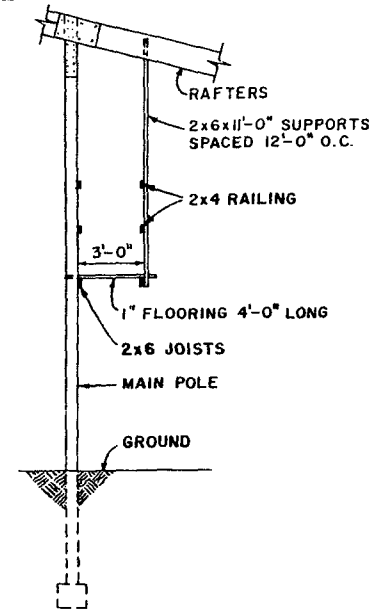


LIVESTOCK MARKET

W VA '71 6129 SHEET 3 OF 6

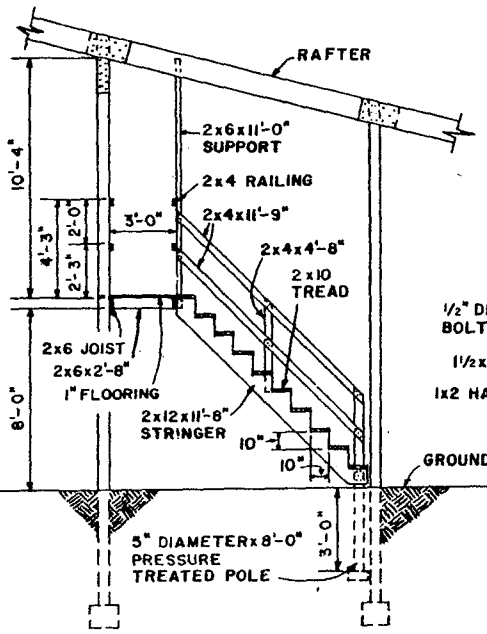


**SECTION D-D**  
SCALE: 1/4"=1'-0"  
STAIRS FROM DOCK TO OVERHEAD WALK

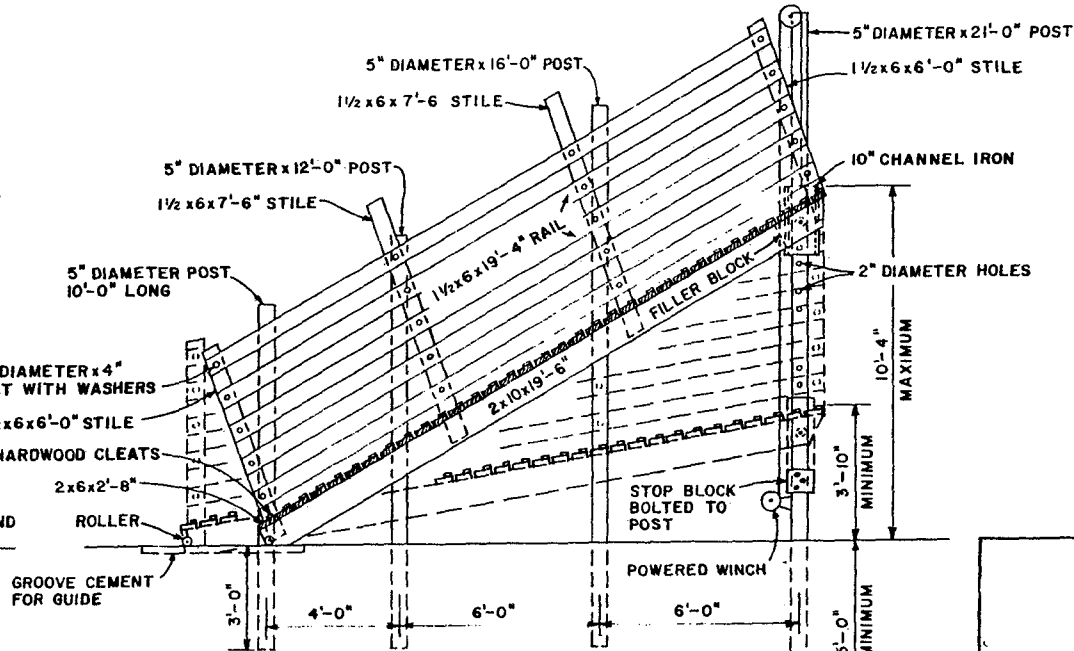


**SECTION E-E**  
SCALE: 1/4"=1'-0"  
OVERHEAD WALK

CONCRETE DRAIN WITH GRILL, 10" WIDE BOTTOM SLOPE 4" PER 10'-0" SEE SHEET 2, END ELEVATION



**SECTION F-F**  
SCALE: 1/4"=1'-0"  
STAIRS FROM PEN AREA TO OVERHEAD WALK

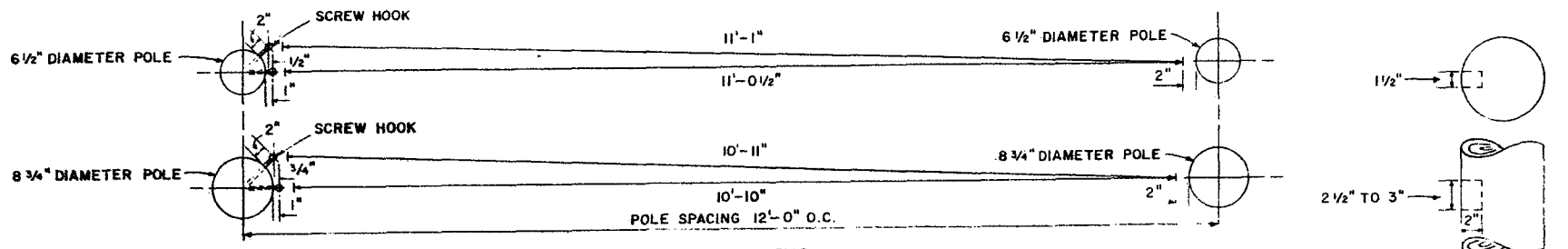


**SECTION G-G**  
SCALE: 3/8"=1'-0"  
3-TIER LOADING DOCK



LIVESTOCK MARKET

W. VA. '71 6129 SHEET 4 OF 6



**GATE LENGTHS**  
EFFECT OF POLE SIZE AND LOCATION OF GATE SCREW HOOKS ON GATE LENGTH VARIATION  
SCALE: 1"=1'-0"

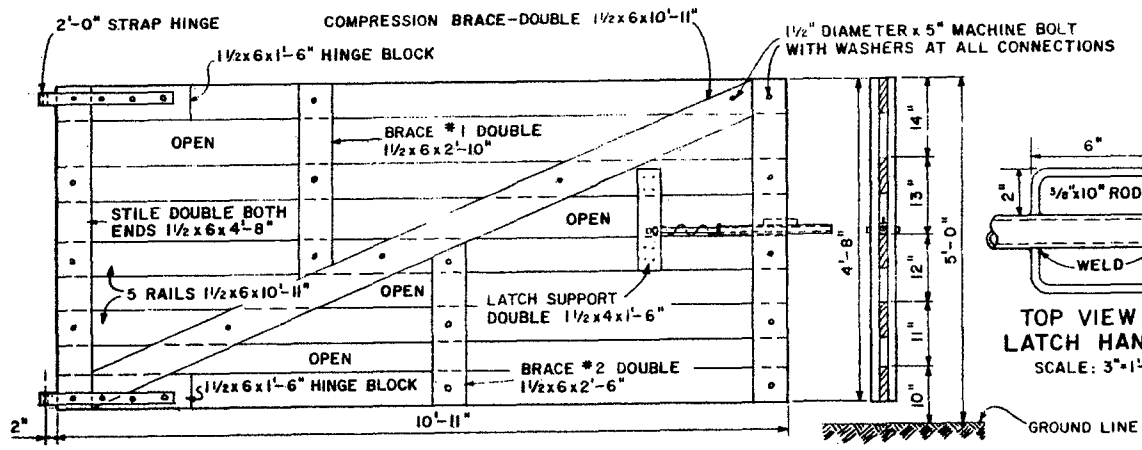
**BILL OF MATERIALS**

**LUMBER**

- 7 PIECES 1 1/2 x 6 x 16'-0"
- 1 PIECE 1 1/2 x 4 x 3'-0"

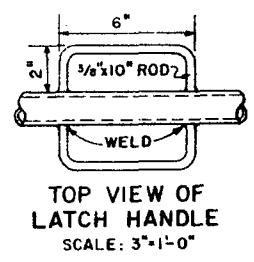
**HARDWARE**

- 18-1/2" DIAMETER x 5" MACHINE BOLTS WITH WASHERS
- 1 PAIR 2'-0" STRAP HINGE WITH BOLTS & SCREW HOOKS
- 1 PIECE 1/2" DIAMETER x 2'-0" GALVANIZED PIPE
- 1 PIECE 1" DIAMETER x 1'-8" GALVANIZED PIPE
- 1 PIECE 1 1/2" WASHER WITH 7/8" DIAMETER HOLE
- 1 PIECE 2" WASHER WITH 7/8" DIAMETER HOLE
- 1 PIECE 1/4" DIAMETER x 5" MACHINE BOLT WITH WASHER
- 2 PIECES 3/8" DIAMETER x 10" ROD, BENT FOR LATCH HANDLE
- 1 PIECE 1/4" x 1/2" x 6" STRAP IRON
- 1 PIECE 1" I.D. COMPRESSION SPRING, 14" FREE LENGTH, 4" COMPRESSED LENGTH, 2" PER INCH K.
- TOTAL FBM 86



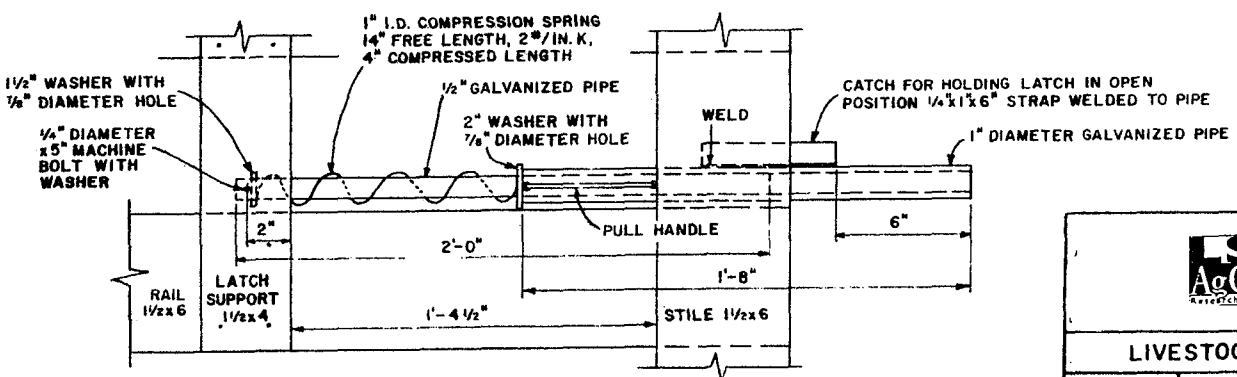
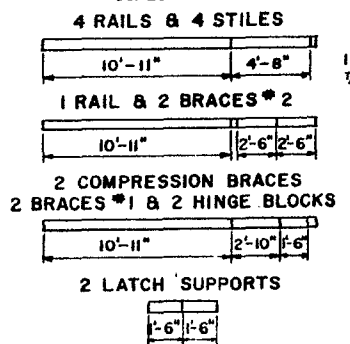
**GATE DETAIL**  
SCALE: 3/4"=1'-0"

**LATCH END OF GATE**  
SCALE: 3/4"=1'-0"



**LUMBER CUTTING SCHEDULE**

SCALE: 1/4"=1'-0"



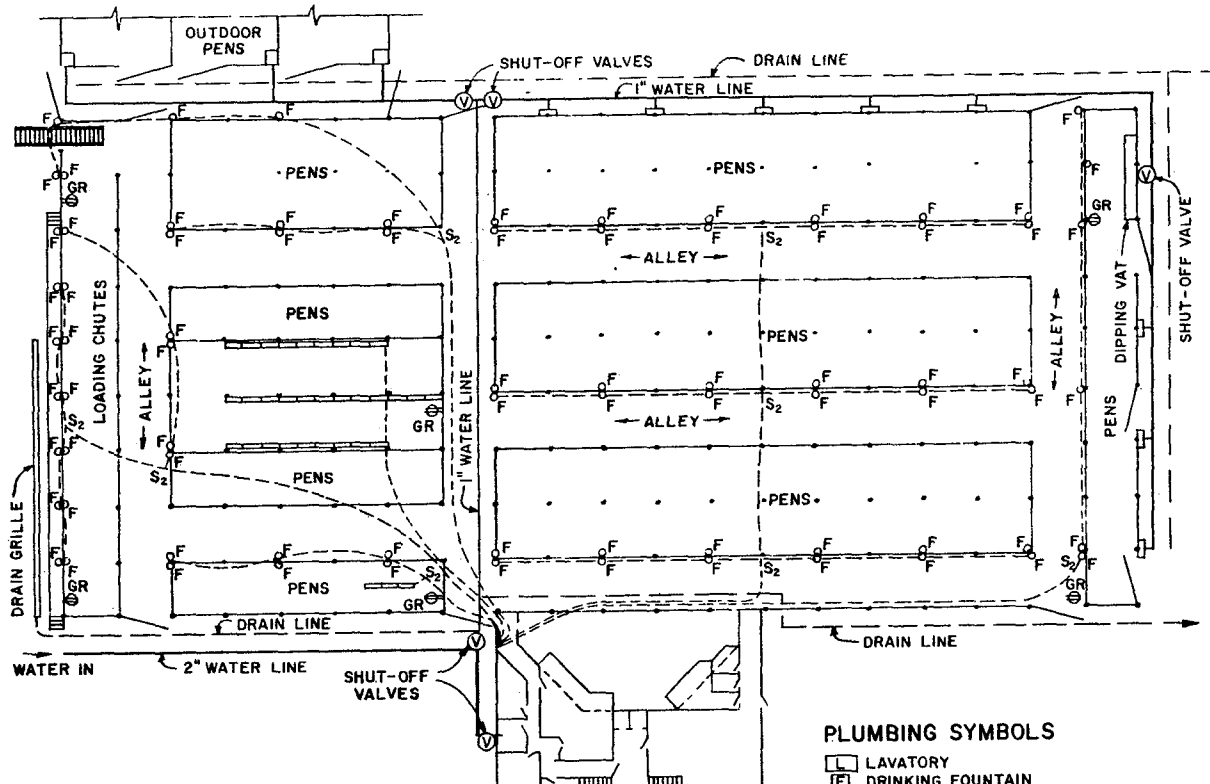
**LATCH DETAIL**  
SCALE: 3"=1'-0"

**LSU**  
**AgCenter**  
Research & Extension

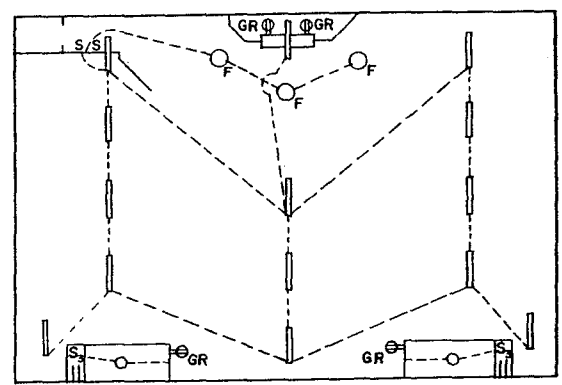
---

**LIVESTOCK MARKET**

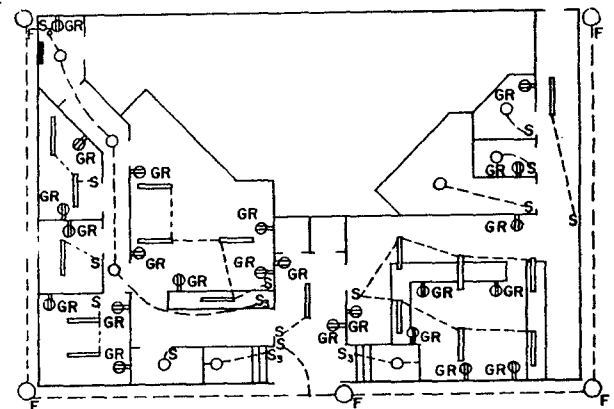
W. VA.	71	6129	SHEET 5 OF 6
--------	----	------	--------------



**ELECTRICAL, WATER LINE AND DRAIN LAYOUT FOR PEN AREA ONLY**  
SCALE: 1"=20'-0"



**AUDITORIUM ELECTRICAL LAYOUT**



**FIRST FLOOR ELECTRICAL LAYOUT**

**PLUMBING SYMBOLS**

- ⊠ LAVATORY
- ⊞ DRINKING FOUNTAIN
- ⊕ VALVE UNDERGROUND BACKDRAIN (MAIN SHUT-OFF)
- ⊙ HOT WATER TANK
- ⊗ SPIGOT
- ⊞ SHOWER
- ⊞ KITCHEN SINK
- HOT WATER LINE
- COLD WATER LINE
- SEWER LINE

**NOTES**

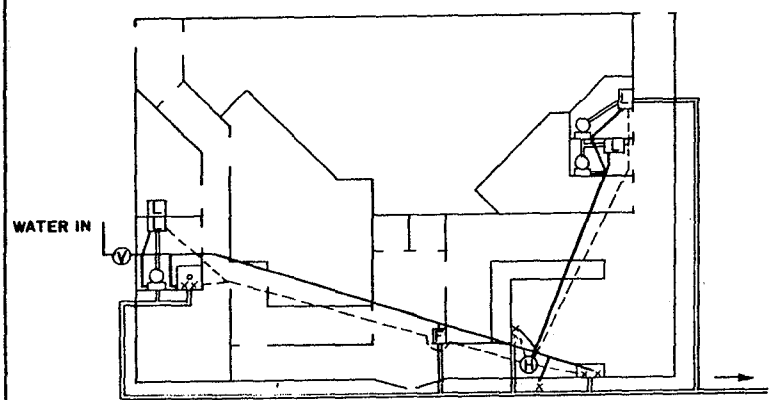
1. FREEZE-PROOF OUTSIDE SPIGOT
2. INSTALL WATER LINES IN CEILING

**ELECTRICAL SYMBOLS**

- REFLECTOR FLOOD LAMPS, 300 WATT
- INCANDESCENT LAMPS, 75 OR 100 WATT
- ⊞ GR GROUNDED TYPE CONVENIENCE OUTLET
- ⊞ FLUORESCENT LAMP, 2 BULBS, 40 WATT
- ⊞ FLUORESCENT LIGHTING OUTLET, 60 WATT, 3 ROWS, 9 LAMPS PER ROW
- S S.P.S.T. SWITCH
- S<sub>2</sub> D.P.S.T. SWITCH (FUSED 15 AMP)
- S<sub>3</sub> THREE WAY SWITCH
- DISTRIBUTION PANEL (FUSE OR CIRCUIT BREAKER)

**NOTES**

1. OUTSIDE FLOOD LIGHTS TO BE MOUNTED UNDER EAVES
2. FLUORESCENT LAMPS TO BE MOUNTED FLUSH WITH CEILING.
3. RECOMMEND 400 AMP. SERVICE, THE A.C. LOAD DEMAND 200 AMP.



**FIRST FLOOR WATER & SEWER LAYOUT**  
TO SEPTIC TANK OR SEWER

SCALE: 1"=10'-0" UNLESS OTHERWISE NOTED



**LIVESTOCK MARKET**

## Disclaimer

This site makes available conceptual plans that can be helpful in developing building layouts and selecting equipment for various agricultural applications. These plans do not necessarily represent the most current technology or construction codes. They are not construction plans and do not replace the need for competent design assistance in developing safe, legal and well-functioning agricultural building system. The LSU Agriculture Center, the Mid-West Plan Service, the United States Department of Agriculture and none of the cooperating land-grant universities warranty these plans.