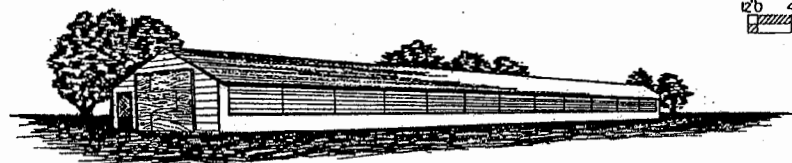
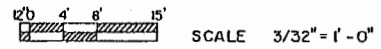
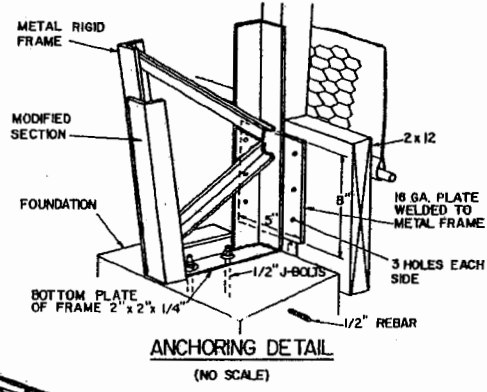


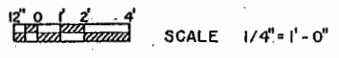
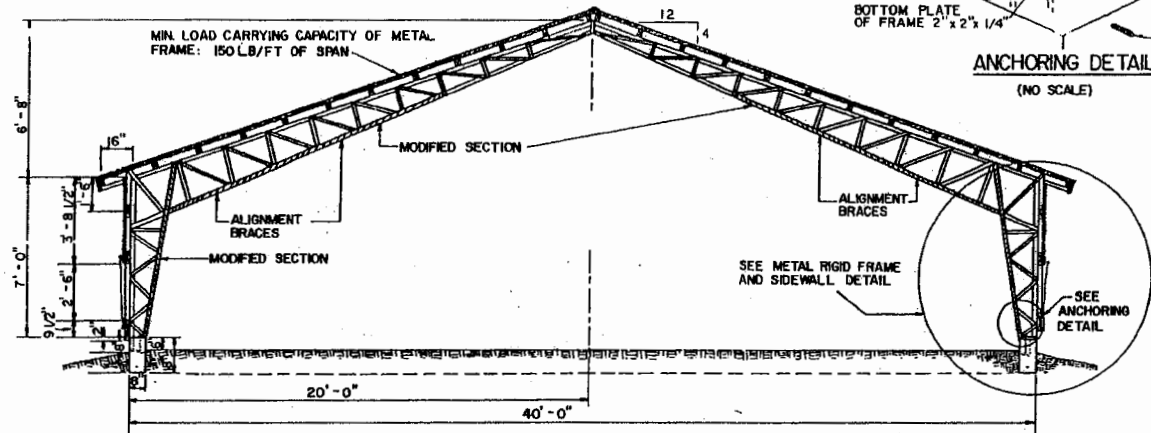
FLOOR PLAN



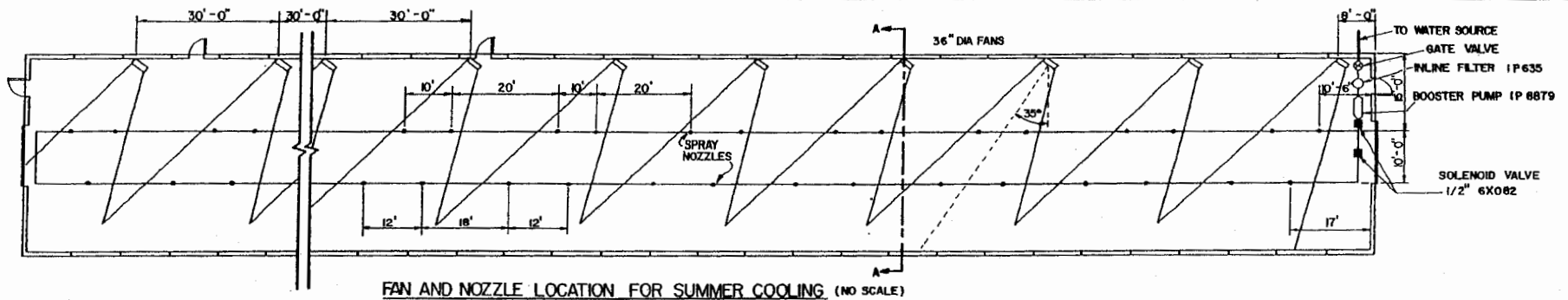
BROILER HOUSE WITH AUTOMATIC CURTAINS AND FOGGING



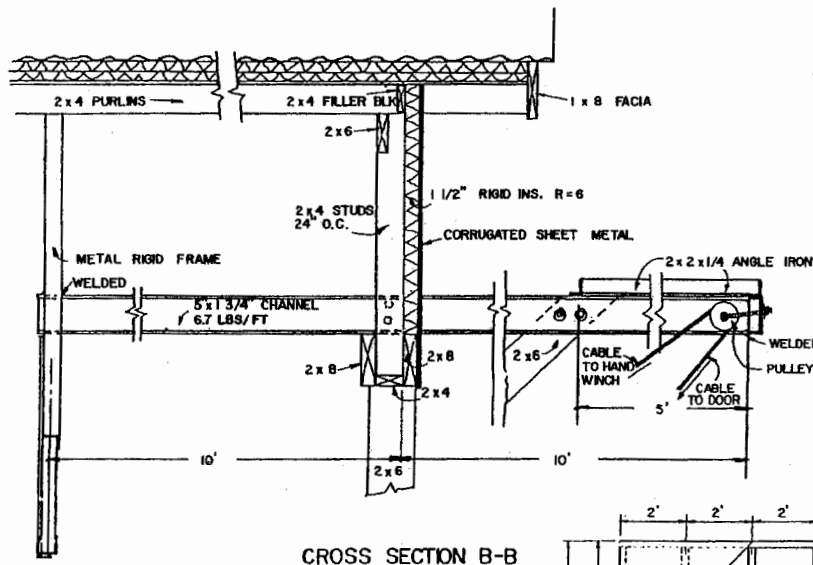
NOTE: THIS PLAN DEPICTS THE USE OF A STEEL BUILDING FOR POULTRY HOUSING. IN PRACTICE, THE DETAILS AND ERECTION OF THE STEEL FRAMING SYSTEM WILL VARY AMONG MANUFACTURERS. THIS PLAN SHOULD AID IN VISUALIZING DIFFERENCES BETWEEN STEEL AND THE MORE COMMONLY USED WOOD BUILDINGS. WHEN USING A STEEL FRAME SYSTEM, ORDER A STRUCTURE THAT WILL WITHSTAND LOCAL SNOW AND WIND LOADS. SPECIFICATIONS. SIZE OF PURLINS WILL DEPEND ON TRUSS SPACING AND LOCAL SNOW LOADS - ILLUSTRATED SPACING AND SIZES FOR 30 LBS/ft² TOTAL ROOF LOAD.



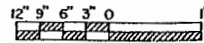
STEEL FRAMED BROILER HOUSE WITH AUTOMATIC CURTAINS, FOGGERS & CEILING FAN		
ARK '87	6390	SHEET 1 OF 6



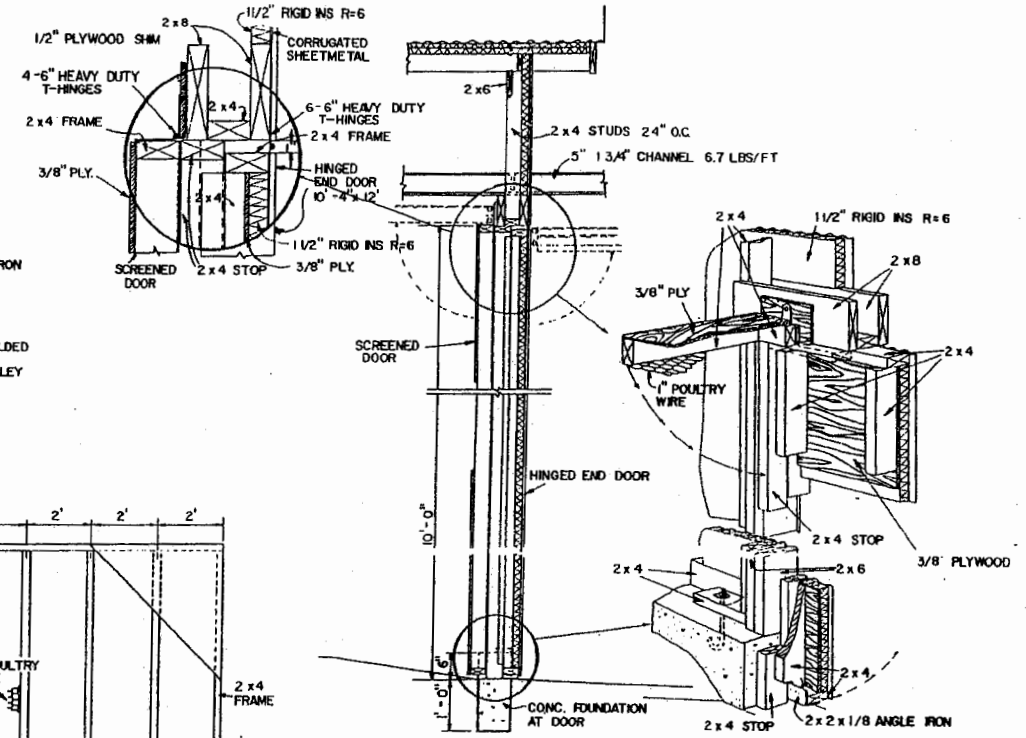
FAN AND NOZZLE LOCATION FOR SUMMER COOLING (NO SCALE)



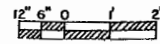
CROSS SECTION B-B



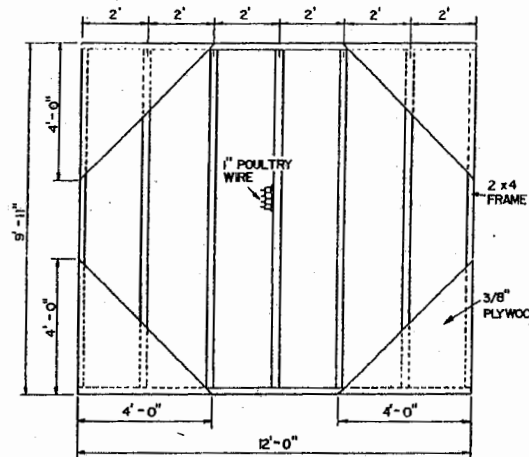
SCALE 1\"/>



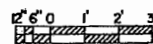
CROSS SECTION B-B



SCALE 1/2\"/>



SCREENED DOOR
DETAIL

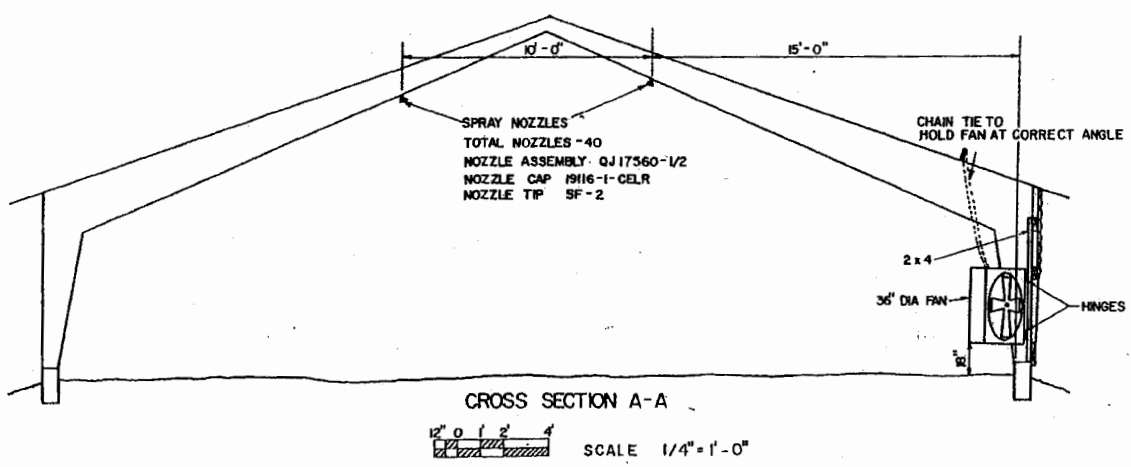
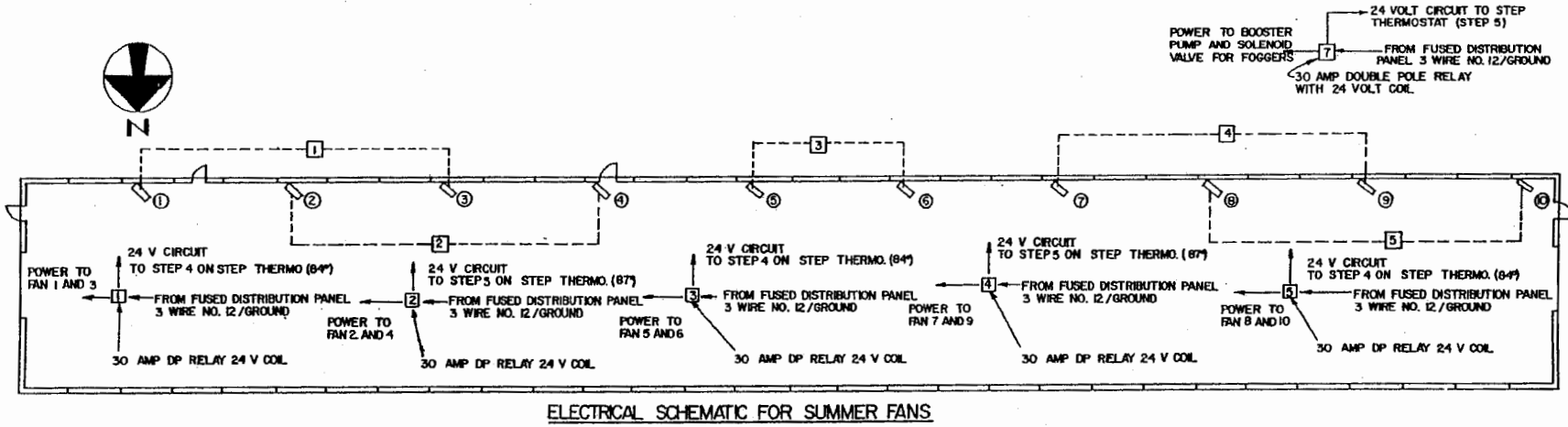
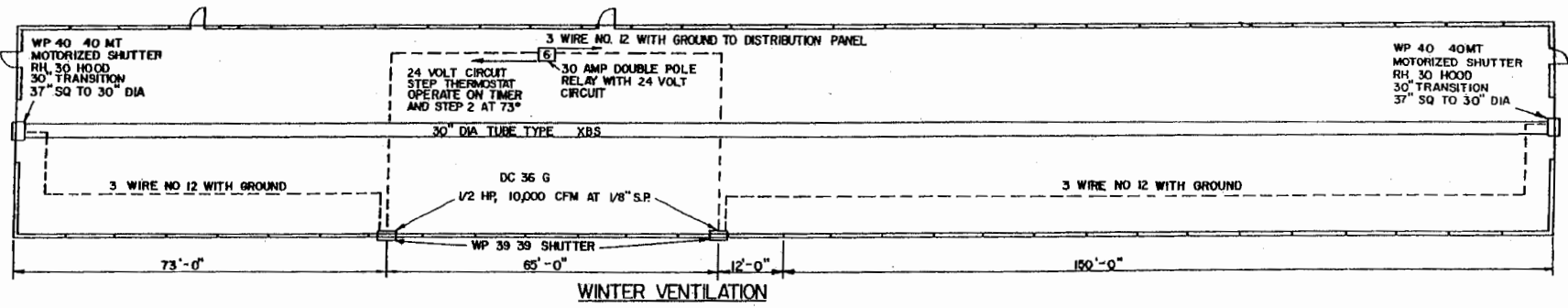


SCALE 3/8\"/>



STEEL FRAMED BROILER HOUSE WITH
AUTOMATIC CURTAINS, FOGGERS & CEILING FAN

ARK '87 6390 SHEET 4 OF 6

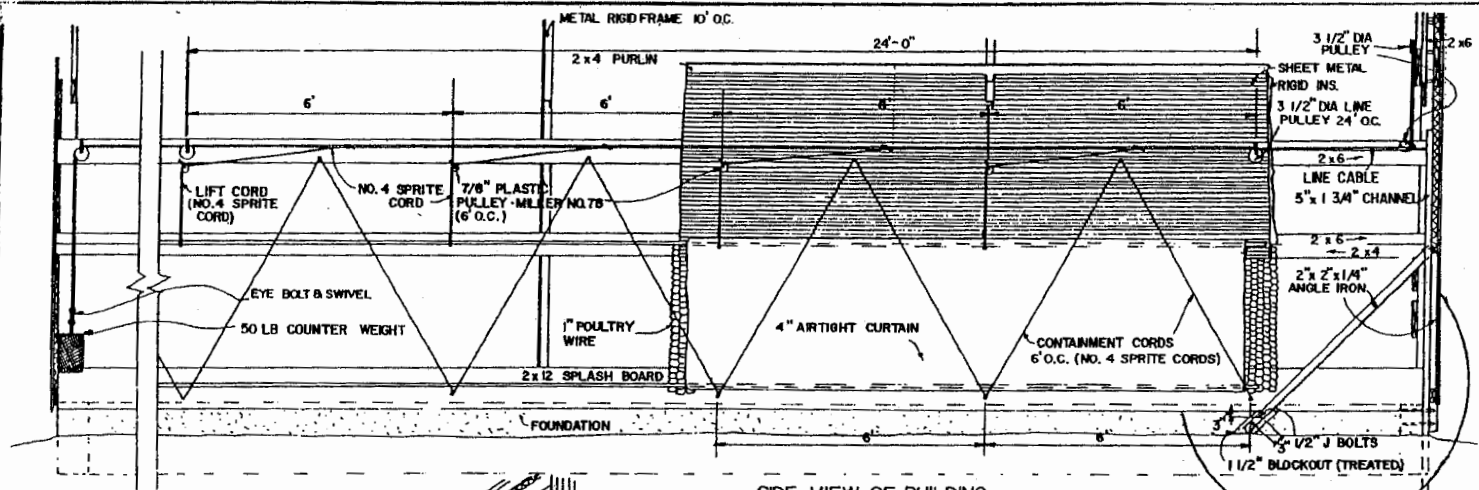


- STEP 1 - SET POINT @ 70° BROODERS OPERATE ANYTIME TEMP. DROPS BELOW SET POINT 10 MIN. CYCLE CLOCK RUNS AT ALL TIMES.
- STEP 2 - 73° WINTER EXHAUST FANS OPERATE CONTINUOUS.
- STEP 3 - 78° CURTAIN OPEN - INSTALL FAN INTERRUPT SWITCH FOR FANS ON CURTAIN CONTROLLER.
- STEP 4 - 84° FIRST SET OF SUMMER FANS OPERATE.
- STEP 5 - 87° SECOND SET OF SUMMER FANS OPERATE - ACTIVATE FOGGERS

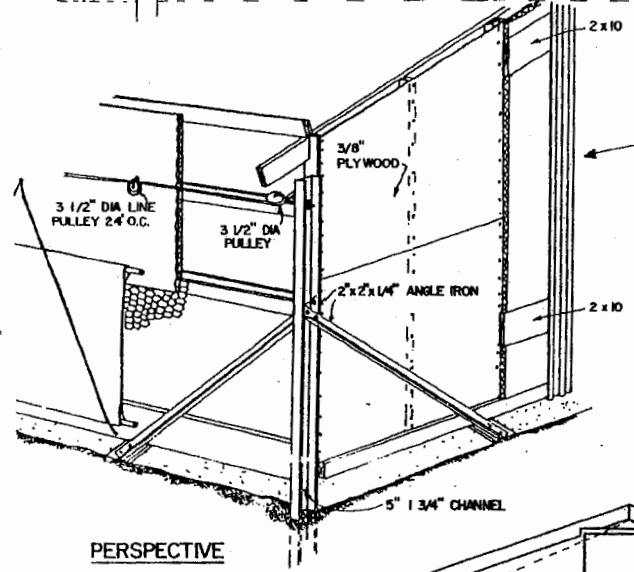
LSU
AgCenter
Research & Extension

STEEL FRAMED BROILER HOUSE WITH
AUTOMATIC CURTAINS, FOGGERS & CEILING FAN

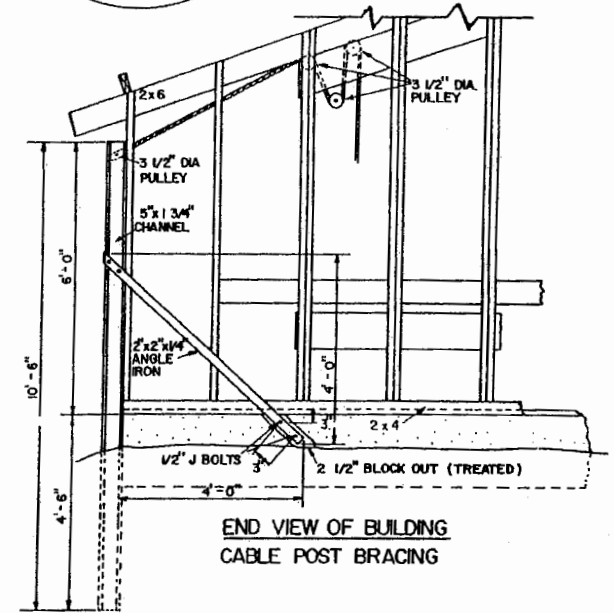
ARK '87	6390	SHEET 5 OF 6
---------	------	--------------



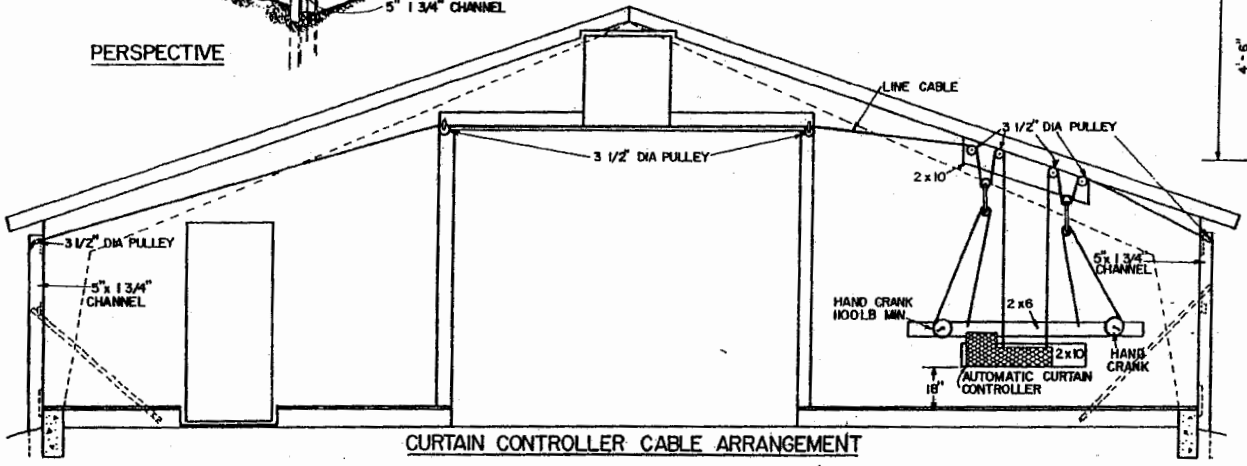
SIDE VIEW OF BUILDING CURTAIN DETAIL



PERSPECTIVE



END VIEW OF BUILDING CABLE POST BRACING



CURTAIN CONTROLLER CABLE ARRANGEMENT



STEEL FRAMED BROILER HOUSE WITH
 AUTOMATIC CURTAINS, FOGGERS & CEILING FAN
 ARK '87 6390 SHEET 6 OF 6

Disclaimer

This site makes available conceptual plans that can be helpful in developing building layouts and selecting equipment for various agricultural applications. These plans do not necessarily represent the most current technology or construction codes. They are not construction plans and do not replace the need for competent design assistance in developing safe, legal and well-functioning agricultural building system. The LSU Agriculture Center, the Mid-West Plan Service, the United States Department of Agriculture and none of the cooperating land-grant universities warranty these plans.