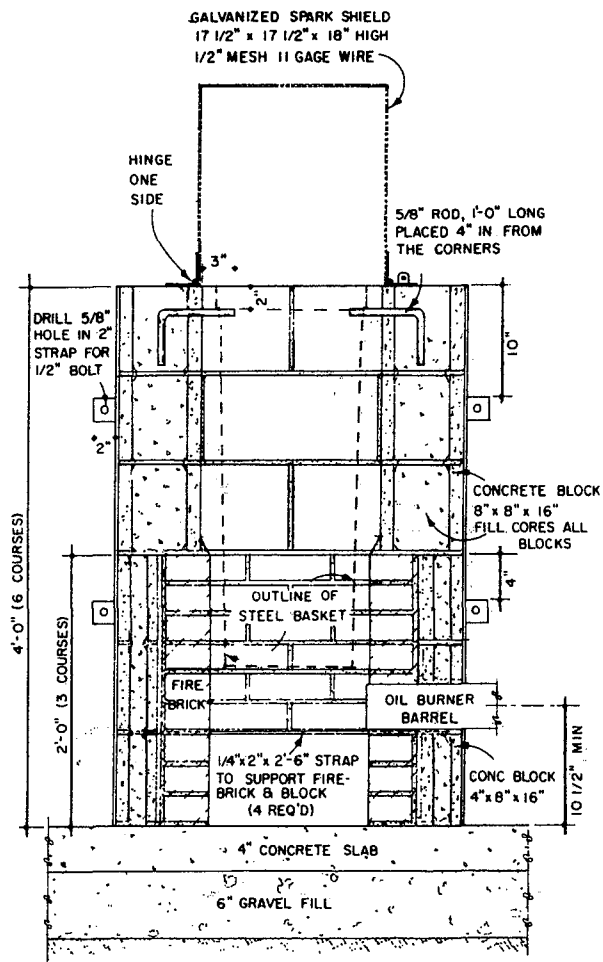


ISOMETRIC VIEW
(SPARK SHIELD REMOVED)

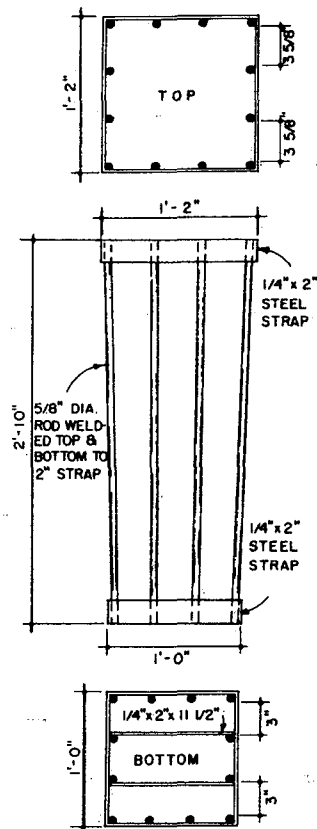
NOTES

- INCINERATOR SLAB
 - PLACE ON A WELL DRAINED SITE OR PROVIDE ADEQUATE FROST PROTECTION AT EDGES.
 - SIZE DETERMINED BY TYPE OF BURNER & SIZE OF WEATHER PROOF SHELTER PROVIDED.
- PROVIDE TWO 8" x 15" OPENINGS AT BASE OF INCINERATOR.
- PROVIDE COVER FOR INCINERATOR WHEN NOT IN USE.

- MAX. NOZZLE SIZE TO BE 2 GALLONS PER HR
- PROVIDE WEATHER PROOF SHELTER OVER OIL BURNER AND CONTROLS



SECTION THRU INCINERATOR



BASKET DETAILS

BILL OF MATERIALS

ITEM	SIZE	PCS.
CONCRETE BLOCK		
A. SIDE CHIMERS	8" x 8" x 16"	6
B. CORNERS	8" x 8" x 16"	12
C. PARTITION	4" x 8" x 16"	4
D. PARTITION (CORNERS)	4" x 8" x 16"	12
E. PARTITION (HALF)	4" x 8" x 8"	4
FIRE BRICK	2 1/2" x 4 1/2" x 9"	80
ANGLE	1/4" x 1 1/2" x 1 1/2"	16
STRAP	1/4" x 2"	44
ROD	5/8" DIAMETER	40
BOLTS	1/2" x 4"	4
OIL BURNER & CONTROLS		1
SPARK SHIELD		1

BASED ON UNIV. OF CONN. PLAN NO. 206



INCINERATOR

USDA '65 EX.5996 SHEET 1 OF 1

Disclaimer

This site makes available conceptual plans that can be helpful in developing building layouts and selecting equipment for various agricultural applications. These plans do not necessarily represent the most current technology or construction codes. They are not construction plans and do not replace the need for competent design assistance in developing safe, legal and well-functioning agricultural building system. The LSU Agriculture Center, the Mid-West Plan Service, the United States Department of Agriculture and none of the cooperating land-grant universities warranty these plans.