

## **BEEF PREMIER EXHIBITOR PROGRAM**

### **Study Guide**

The Beef Premier exhibitor contest is open to all bonafide 4-H and FFA members. You must be entered in the Calcasieu Parish Livestock Show to participate.

The Beef Premier Exhibitor Program will consist of 3 parts and will be divided into:

- |     |                    |   |
|-----|--------------------|---|
| I   | 30% Written test   | Material will come from 4-H project materials.              |
| II  | 50% Skillaton      | Their will be four or five stations of hands on activities. |
| III | 20% Livestock Show | Consist of showmanship and ribbon group of your animal      |

The person with the highest total points will be the winner. **There will be 3 divisions : grades 4-6 Elementary; grades 7-8, Juniors; grades 9-12, Seniors.**

### **WRITTEN TEST**

The test will be true/false, multiple choice, & matching. ( 20 x 2 points) All material covered on the test or skillathon will come from the following project books or other handouts available at the 4-H office:

- Bite into Beef - Level 1 (4-6th)
- Here's the Beef - Level 2 (7- 8<sup>th</sup>)
- Leading the Charge - Level 3 (9-12th)
- Handout -Parts of the Beef animal
- Handout -Wholesale cuts of the Beef animal
- Handout -Sample feed tags to read
- Handout -Sample medication and vaccines labels to read
- Handout -Breeds of beef cattle

**SKILLATON** Stations exhibitors will compete in are:

**Beef Breed Identification** - (10 x 3 points) Identify 10 breeds from a list of 15 common breeds of cattle in La. These are the only breeds the skillaton will cover.

Color pictures available online @ <http://www.ansi.okstate.edu/breeds/cattle/>

Brahman	Beefmaster
Angus	Brangus
Hereford	Braford
Charlois	Gelvieh
Simmental	Santa Gertrudis
Limousin	Simbrah
Polled Hereford	Longhorn
Shorthorn	

**Meat Identification** - (10 x 2 points) Label 10 - 15 cuts of meat or wholesale cuts from a poster.

Feed Identification - (5 x 2 points) Identify 5 feeds from a list of 10

Feed stores may have some of these samples.

Whole corn	Soybean meal
Steam rolled corn	Cottonseed meal
Whole oats	Salt
Rolled (crempt) oats	Mineral premix
Rice Bran	Complete feed ( ex. sweet feed)

Feed Tag Identification - (5 x 2 points) Read information on feed tag labels and answer a few questions related to the tags. Look at different feed tags at any feed store. Students will pick one out of 5 labels related to cattle feeds and answer questions related to:

What is the (minimum or maximum) Protein content of the feed?

What is the Fiber content of the feed?

Does this feed contain any vitamins or minerals?

Does this feed contain medication or growth promoters?

What are the feeding directions for this feed?

Is their any withdrawal period before slaughter on the feed?

What is the fat content of the feed?

Parts Identification - (15 x 2 points) Label 15 parts of the beef animal from the picture.

Beef Quality Assurance - (5 x 2 points) **Intermediate & Seniors only**

Youth will answer 5 questions related to reading labels on medicines & vaccines or demonstrate giving a proper injection. Sample labels of medicines and vaccines are included in a handout. Sample questions may be:

What is this medication used to treat or prevent?

How many ml are recommended per 100/ lbs. of body weight?

Is there a withdrawal time on this medication before slaughter?

Where the medication should be given? (subcutaneous, intramuscularly).

How often should you re-administer the medication?

Identify what part of the body to give an injection.

Draw a syringe with the right amount of medication per body weight of the animal.

## **LIVESTOCK SHOWS**

Showmanship Contest - (15 points) Each participant will receive 10 points for participation and up to five points for placing first; down to one point for placing fifth.

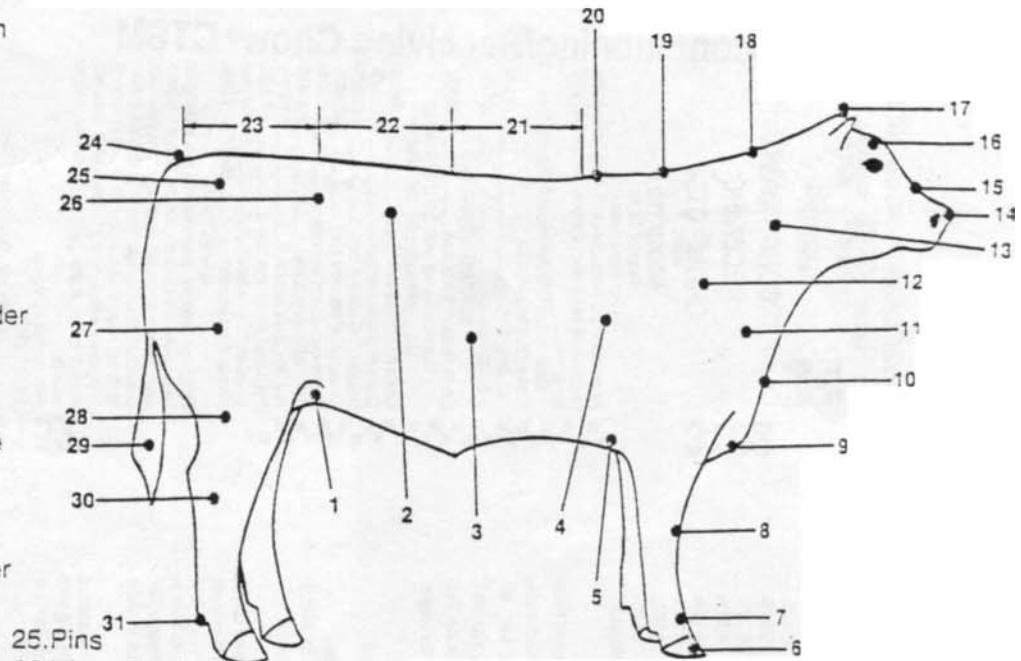
Placing in livestock show with animals - (5 points) Each exhibitor will receive points based on their ribbon grouping by the judge. Purple ribbon 5 points, Blue - 3 points, & Red - 1 point.

**AWARDS** - 4-H and FFA members will receive jackets for winning their division and a buckle for the overall winner. All participants will receive a certificate.

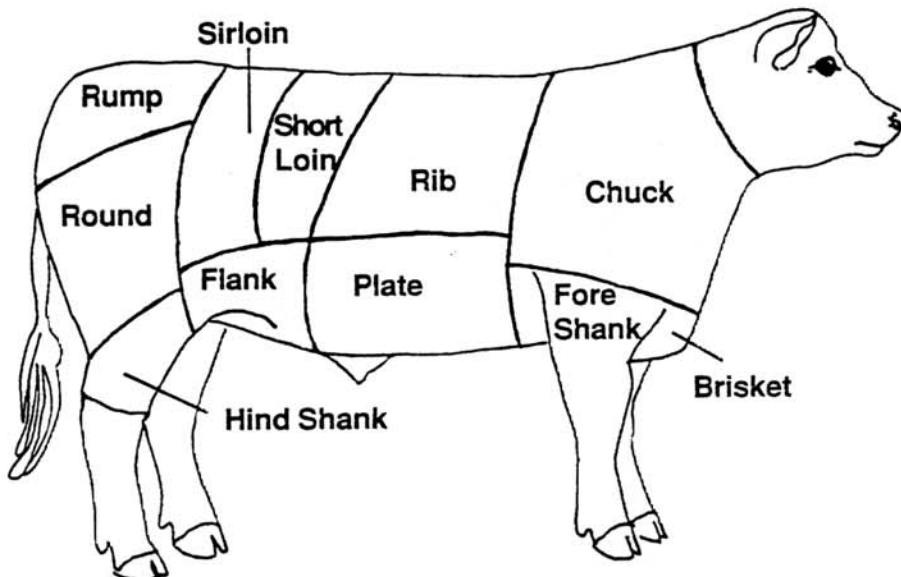
OUTSTANDING BEEF EXHIBITOR STUDY GUIDE

PARTS OF A BEEF ANIMAL

- 1.Rear flank
- 2.Edge of the loin
- 3.Rib
- 4.Heart girth
- 5.Fore flank
- 6.Hoof
- 7.Pastern
- 8.Knee
- 9.Brisket
- 10.Dewlap
- 11.Point of shoulder
- 12.Shoulder
- 13.Neck
- 14.Muzzle
- 15.Bridge of Nose
- 16.Forehead
- 17.Poll
- 18.Crest
- 19.Top of shoulder
- 20.Crops
- 21.Back
- 22.Loin
- 23.Rump
- 24.Tail head
- 25.Pins
- 26.Hip or hook
- 27.Round
- 28.Twist
- 29.Switch
- 30.Hock
- 31.Dew Claw



WHOLESALE BEEF CUTS

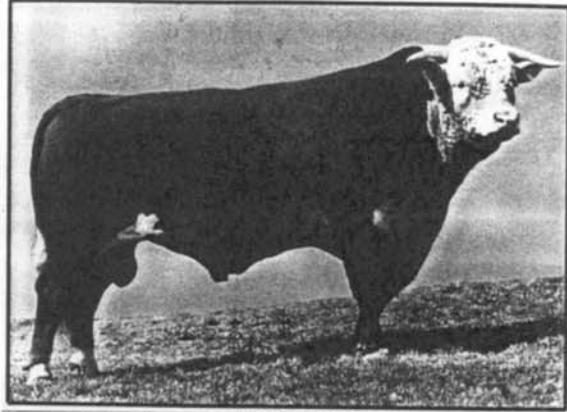


Color pictures are available online @ <http://www.ansi.okstate.edu/breeds/cattle/>

**ANGUS**

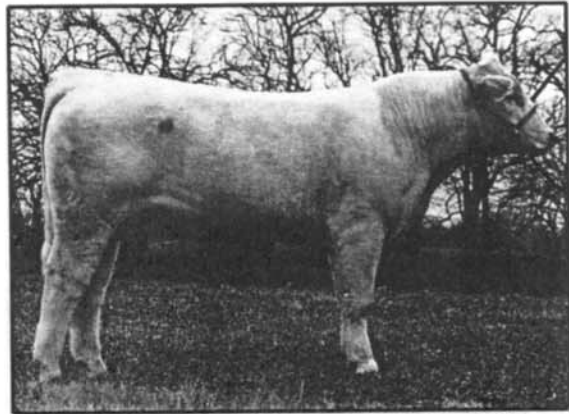
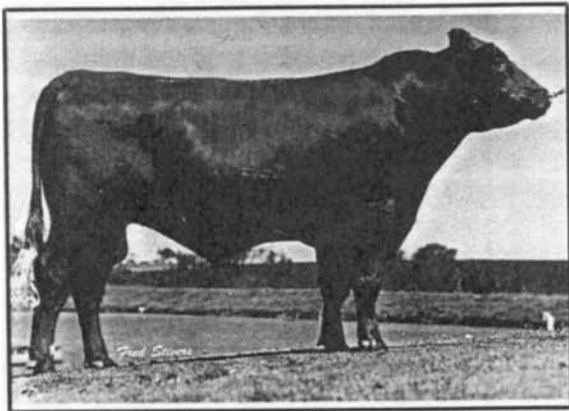


**HORNED HEREFORD**



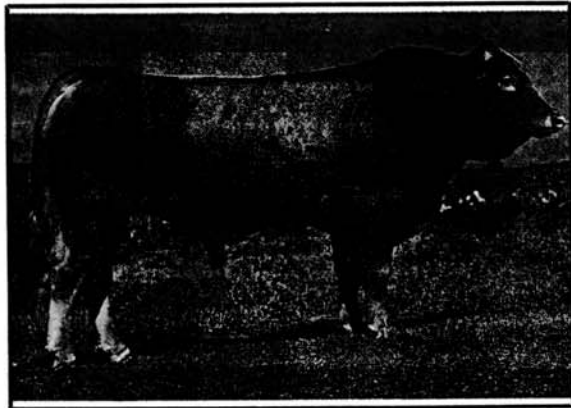
**CHAROLAIS**

**SHORTHORN**



**GELBIVIEH**

**POLLED HEREFORD**

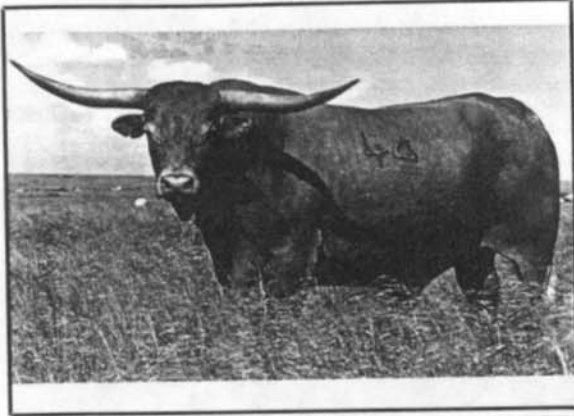


**LIMOUSIN**

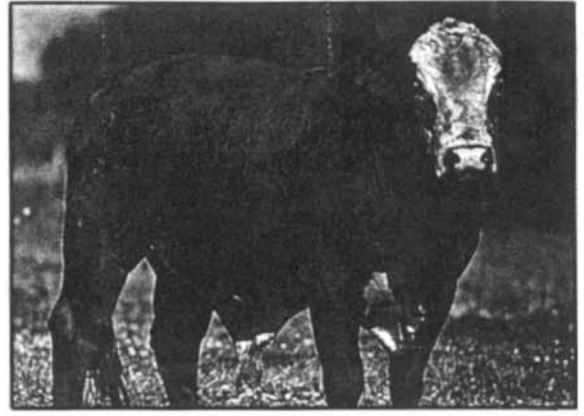
**BEEF BREEDS OF CATTLE  
STUDY GUIDE**



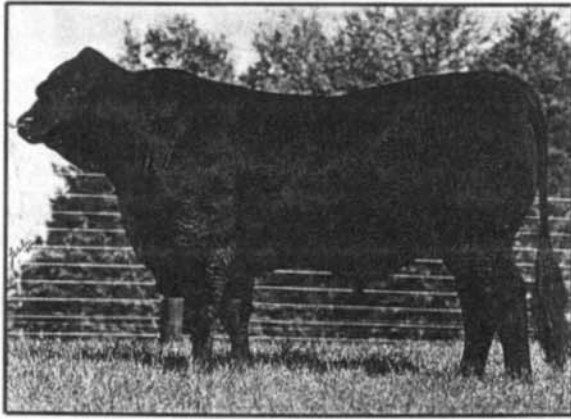
TEXAS LONGHORN



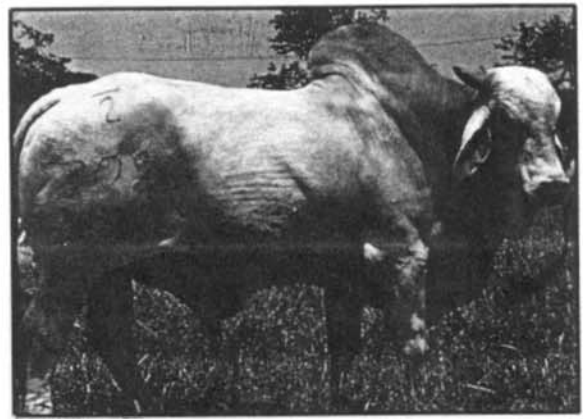
BRAFORD



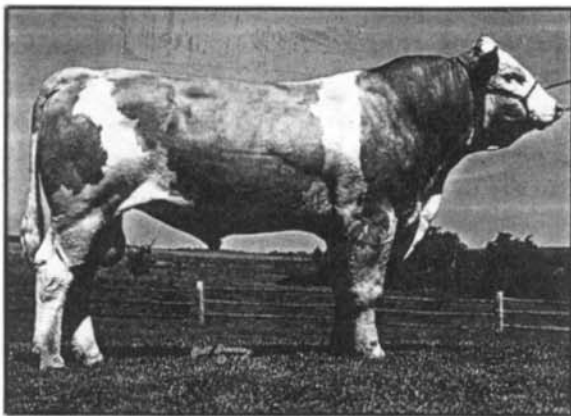
BRANGUS



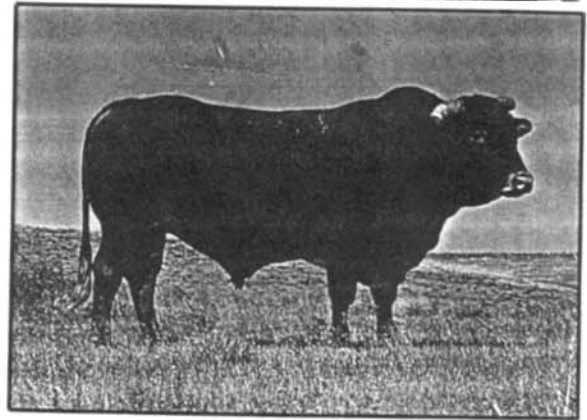
BRAHMAN



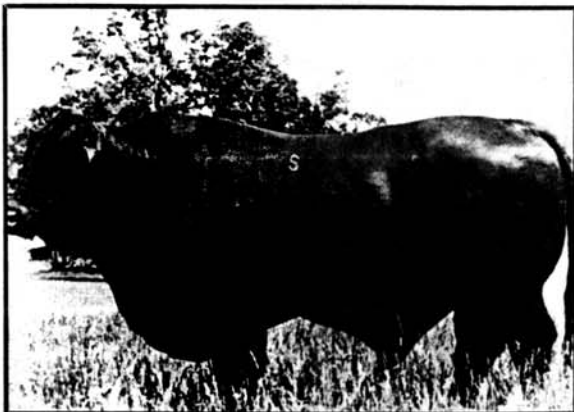
SIMENTAL



BEEFMASTER



SANTA GERTRUDIS



SIMBRAH



**14% CALF CREEP  
PELLETS  
FOR BEEF CATTLE ON PASTURE**

**Guaranteed Analysis**

Crude Protein (min)	14.00%
Crude Fat (min)	2.00%
Crude Fiber (max)	18.00%
Calcium (min)	0.30%
Calcium (max)	1.30%
Phosphorus (min)	0.40%
Phosphorus (max)	0.20%
Salt (min)	1.00%
Salt (max)	0.50%
Potassium	5.000 IU/lb.
Vitamin A (min)	5,000 IU/lb.

**Ingredient Statement**

Grain Products, Plant Protein Products, Processed Grain By-Products, Roughtage Products (25%), Lignin Sulfonate, Ground Limestone, Defluorinated Phosphate, Salt, Vitamin A Supplement, Vitamin D<sub>3</sub> Supplement, Vitamin E Supplement, Manganese Oxide, Ferrous Carbonate, Zinc Oxide, Zinc Sulfate, Copper Oxide, Cobalt Carbonate, Sodium Selenite.

**Feeding Directions**

**Cattle:**  
200 lbs. to 500 lbs. Calves Suckling Their Dams:  
Feed ration free-choice to suckling calves. Be sure to feed ration in a covered feeder so feed remains dry.  
**Weaned Calves:**  
Gradually start calves on feed. Begin by feeding calves about 2 lbs. to 3 lbs. per head per day. Gradually increase feed until calves are consuming about 1 to 1.5% of their body weight of ration per head per day. Be sure to supply adequate quantities of good quality forage or hay to calves. Provide plenty of clean, fresh water to cattle at all times.

**Warning:** Be sure to store feed in a dry, well ventilated area protected from rodents and insects. Do not feed moldy or insect-infested feeds as it may cause illness or death.

Guaranteed By  
O'Neal's Feeders Supply, Inc  
P.O. Box 307  
DeRidder, Louisiana 70634

NET WT. ON BAG OR BULK



OR BULK

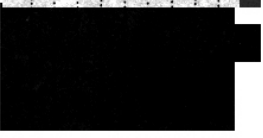
O'Neal's Feeders Supply, Inc  
P.O. Box 307  
DeRidder, Louisiana 70634

**Ingredient Statement**  
Grain products, Plant Protein Products, Processed Grain By-Products, Roughtage Molasses Products, Lignin Sulfonate, Ground Limestone, Salt, Vitamin A Supplement, Vitamin D<sub>3</sub> Supplement, Vitamin E Supplement, Sodium Selenite.

**Ingredient**  
Rolled Corn  
Wheat Midds  
14% Pellets  
Rice Mill Feed  
Centocend Hulls  
Ground Limestone  
Mixing Salt  
Molasses Products  
Total

**FLETCHER'S CAJUN  
CUSTOM MIX**

**INGREDIENTS**



NET WEIGHT SHOWN ON BAG and/or VOICE



3152

**PRECONDITIONING/  
RECEIVING  
CHOW® CTS<sup>SM</sup>**

BRAND  
MEDICATED  
Feedlot Cattle

For Ruminants Only

As an aid in the maintenance of joint gains in the presence of respiratory disease, such as Shipping Fever.

**Caution:** Use Only As Directed. Reverse Side.

Active Drug Ingredients:

Chlortetracycline..... 70.00 g/T  
Sulfamethazine..... 0.0077%

**GUARANTEED ANALYSIS**

Crude protein not less than	12.0000%
This includes not more than 2.00% equiva- lent protein from non-plant nitrogen	
Crude fat not less than	1.0000%
Crude fiber not more than	28.0000%
Calcium (Ca) not less than	0.6000%
Calcium (Ca) not more than	0.8000%
Phosphorus (P) not less than	0.3000%
Salt (NaCl) not less than	0.3000%
Salt (NaCl) not more than	0.5000%
Potassium (K) not less than	1.1000%
Selenium (Se) not less than	0.3000 ppm
Vitamin A not less than	5000.0000 IU/lbs.

**INGREDIENTS**

Roughtage products, grain products, processed grain by-products, plant protein products, forage products, urea, calcium carbonate, calcium phosphate, salt, potassium chloride, magnesium potassium sulfate, molasses products, Vitamin A supplement, manganese sulfate, ferrous sulfate, cobalt carbonate, calcium iodate, copper & zinc, zinc sulfate, sodium selenite.

44% roughtage products  
14CR T 3152-

(Continued - See Reverse Side)  
PURINA MILLS, INC. P.O. Box 66812  
St. Louis, MO 63166-8812  
QUALITY CONTROL BY PURINA RESEARCH

3152

3152

PRECONDITIONING/  
RECEIVING CHOW® CTS<sup>SM</sup>

**SAMPLE MEDICINE LABELS**

**Liquamycin® LA-200®**  
(oxytetracycline injection)

**CATTLE DOSAGE GUIDE**

At the first sign of pneumonia or other respiratory infection, administer a single dose of Liquamycin LA-200 by deep intramuscular injection according to the following weight categories:

Animal weight (lb)	Number of mL of cc	Animal weight (kg)	Number of mL of cc	Animal weight (lb)	Number of mL of cc
200	9.0	90	2.25	1000	45.0
300	13.5	135	3.38	1500	67.5
400	18.0	180	4.50	2000	90.0

See package insert for dosing instructions for other indicated diseases and for product information. Do not administer more than 10 mL per lb (22.5 mg/kg) of body weight per day. Do not administer more than 28 days prior to slaughter.

**SWINE DOSAGE GUIDE**

At the first sign of pneumonia, administer Liquamycin LA-200 by deep intramuscular injection according to the following weight categories:

Animal weight (lb)	Number of mL of cc	Animal weight (kg)	Number of mL of cc	Animal weight (lb)	Number of mL of cc
10	0.5	4.5	0.11	100	4.5
20	1.0	9.0	0.22	200	9.0
30	1.5	13.5	0.33	300	13.5
40	2.0	18.0	0.44	400	18.0

**Liquamycin® LA-200®** (oxytetracycline injection) is a sterile, preconstituted solution of the broad-spectrum antibiotic oxytetracycline.

**WARNING: Discontinue treatment at least 28 days prior to slaughter of cattle and swine.**

Not for use in lactating dairy animals.

**PRECAUTIONS:** Exceeding the highest recommended level of drug per pound of body weight per day, administering more than the recommended number of treatments, and/or exceeding 10 mL intramuscularly per injection site in adult beef cattle and/or non-lactating dairy cattle and 5 mL intramuscularly per injection site in adult swine, may result in anaphylactic residues beyond their withdrawal period.

**STORE AT ROOM TEMPERATURE 15°-30°C (59°-86°F)**

**KEEP FROM FREEZING**

**REFER TO PACKAGE INSERT FOR COMPLETE DIRECTIONS**

**Restricted Drug(s) (California)**  
Not For Human Use.  
Use Only As Directed.

**Valbazen®**  
(Brand of Albendazole)  
Cattle Dewormer Suspension  
For Oral Use in Cattle

For Removal and Control of Liver Flukes, Tapeworms, Stomach Worms, Intestinal Worms, Lungworms and Tapeworms.

**Active Ingredient:** Albendazole (equivalent to 113.8 mg/mL)

**Indications:** Valbazen is a broad-spectrum anthelmintic effective in the removal and control of the following internal parasites of cattle:

**Adult Liver Flukes:** *Fasciola hepatica*  
**Head and Slaughter Tapeworms:** *M. expansa*  
**Adult and 4th Stage Larvae of Stomach Worms:** Brown Stomach Worm (*Ostertagia ostertagi*), Barberpole Worm (*Trichostrongylus axei*), *Trichostrongylus axei*, *Trichostrongylus axei*  
**Adult and 4th Stage Larvae of Intestinal Worms:** Thread-necked Intestinal Worm (*Nematodirus spathiger*), *Nematodirus spathiger*, *Nematodirus spathiger*  
**Adult Stage of Intestinal Worms:** Hoopworm (*Haemonchus contortus*), *Haemonchus contortus*, *Haemonchus contortus*  
**Adult Stage of Intestinal Worms:** Cooperia punctata and *C. oncophora*  
**Adult and 4th Stage Larvae of Lungworms:** *Dicrocoelium viviparum*  
**Adult and 4th Stage Larvae of Lungworms:** *Dicrocoelium viviparum*

**Dosage and Administration:** Valbazen Suspension should be administered to cattle at the recommended rate of 4 mL/100 lb of body weight (equivalent to 4.54 mg of albendazole/lb, 10 mg/kg). The following label includes recommended dosing schedules.

Body Weight	Dosage	Body Weight	Dosage
250 lb	10 mL	1000 lb	40 mL
500 lb	20 mL	1250 lb	50 mL
750 lb	30 mL	1500 lb	60 mL

One L of 11.38% Suspension contains enough Valbazen to treat 50,000-lb animals.

**Valbazen 11.38% Suspension** should be given orally using any type of standard dosing gun or dose syringe. Accurate estimates of the weight of the cattle to be treated are essential for most effective results with this product. Animals constantly exposed to internal parasites should be retreated as necessary.

**Important:** Accurate estimates of the weight of the cattle to be treated are essential for most effective results with this product. Animals constantly exposed to internal parasites should be retreated as necessary.

**WARNING:** Cattle must not be slaughtered within 27 days following last treatment. Because a withdrawal time in milk has not been established, do not use in female dairy cattle of breeding age.

**Caution:** Do not administer to female cattle during first 45 days of pregnancy or for 45 days after removal of bulls. Contact your veterinarian for assistance in the diagnosis, treatment, and control of parasites.

**Keep This and All Medication Out of Reach of Children**

Shake Well Before Using  
For Use in Animals Only



**CURATREM®**  
(chlorisulfon)  
8.5% Liver Fluke Drench  
for Cattle (85 mg/mL)

Product 24411

**FOR ORAL USE IN CATTLE ONLY**

**INDICATIONS:** For the treatment of immature and adult liver fluke (*Fasciola hepatica*) in cattle.

**DIRECTIONS FOR USE AND DOSAGE:** Dose: The recommended dose of CURATREM Suspension is 1/4 fl oz per 200 lb body weight (7.2 mL per 200 lb or 91 kg). This equals 7 mg chlorisulfon per kg body weight (approximately 3.2 mg per lb).

**Administration:** (1) Shake container well before using. (2) Use automatic or single-dose dosing equipment. (3) Set equipment gauge at the required dose. (4) Insert the nozzle of the syringe into the corner of the mouth. (5) Deposit the suspension over the back of the tongue.

Timing of retreatment for cattle is based on geographic, climatic, and husbandry considerations.

Consult your veterinarian for assistance in the diagnosis, treatment, and control of parasitic considerations.

**WARNING:** Because a withdrawal time in milk has not been established, do not use in female dairy cattle of breeding age. Do not treat cattle within 8 days of slaughter.

Keep this and all drugs out of the reach of children.

Curatrem REG TM MERCK & CO., Inc.  
86369303 Lot No & WBY01Z AUG98  
U S PAT 4,064,239 Exp Date



**TIONS:** Synchronic Bovine Dewormer Suspension, a broad-spectrum anthelmintic effective for the removal and control of the following parasites in cattle: lung- and roundworms (including inhibited forms of *Ostertagia viviparum*) and tapeworms, as indicated below:

**Lungworms:** *Dicrocoelium viviparum* (Adult, L.)  
**Stomach Worms:** *Haemonchus contortus* (Adult)  
*Haemonchus placei* (Adult)  
*Trichostrongylus axei* (Adult)  
*Ostertagia ostertagi* (Adult, L.; inhibited L.)  
**Intestinal Worms:** *Oesophagostomum radiatum* (Adult)  
*Bunostomum phlebotomum* (Adult)  
*Cooperia punctata* (Adult, L.)  
*Cooperia oncophora* (Adult, L.)  
*Cooperia mombasi* (Adult, L.)  
**Tapeworms:** *Moniezia benediti* (Adult)

**DOSE AND ADMINISTRATION:** Synchronic Bovine Dewormer Suspension, 22.5%, is supplied in 500 mL packages containing 225 mg of oxfendazole per mL. The recommended dose for cattle is 2.05 mg/lb (4.5 mg/kg) of body weight.

Before using the Synchronic Rumen Injector, carefully read the instruction manual provided with the instrument for full information in regard to the proper care and use of the device.

When using the Synchronic Rumen Injector, locate the correct target area on the LEFT SIDE of the animal (the triangle formed by the rear of the last rib, below the edge of the spine, and in front of the hip). Place the plastic sprout in the center of this area. Push the injector firmly into the animal's left side, at a right angle to the body surface, evenly depressing the plastic sprout. Pressing the injector firmly into the animal's side will activate the delivery system. Maintain pressure on the injector for 2-3 seconds to allow the full dose to be delivered.

Withdraw the instrument.

**THE RIGHT SIDE OF THE ANIMAL MUST NOT BE USED.**

Appropriate cleanliness should always be observed. Always use a clean sharp needle, disinfect and replace as necessary. Use of the Synchronic Rumen Injector on wet animals is not recommended.

U.S. Patent No. 3,929,821; 4,080,461, and others.

Fort Dodge Laboratories, Inc.  
Fort Dodge, Iowa 50501 USA

**EXAMPLES:**

CATTLE WEIGHT	DOSE
110 lb (50 kg)	1.0 mL
220 lb (100 kg)	2.0 mL
330 lb (150 kg)	3.0 mL
440 lb (200 kg)	4.0 mL
550 lb (250 kg)	5.0 mL
660 lb (300 kg)	6.0 mL
770 lb (350 kg)	7.0 mL
880 lb (400 kg)	8.0 mL
990 lb (450 kg)	9.0 mL
1100 lb (500 kg)	10.0 mL

Treatment may be repeated in 4-6 weeks.