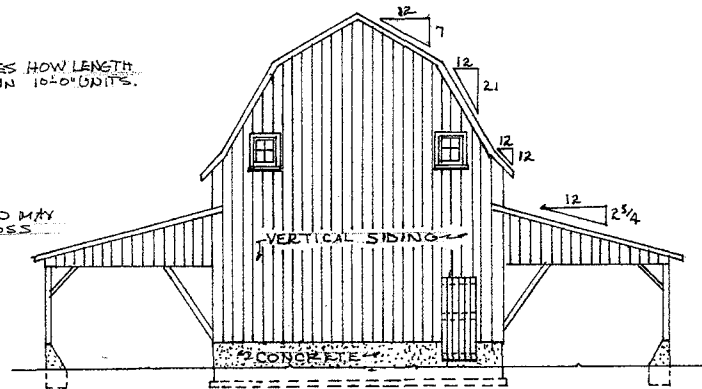


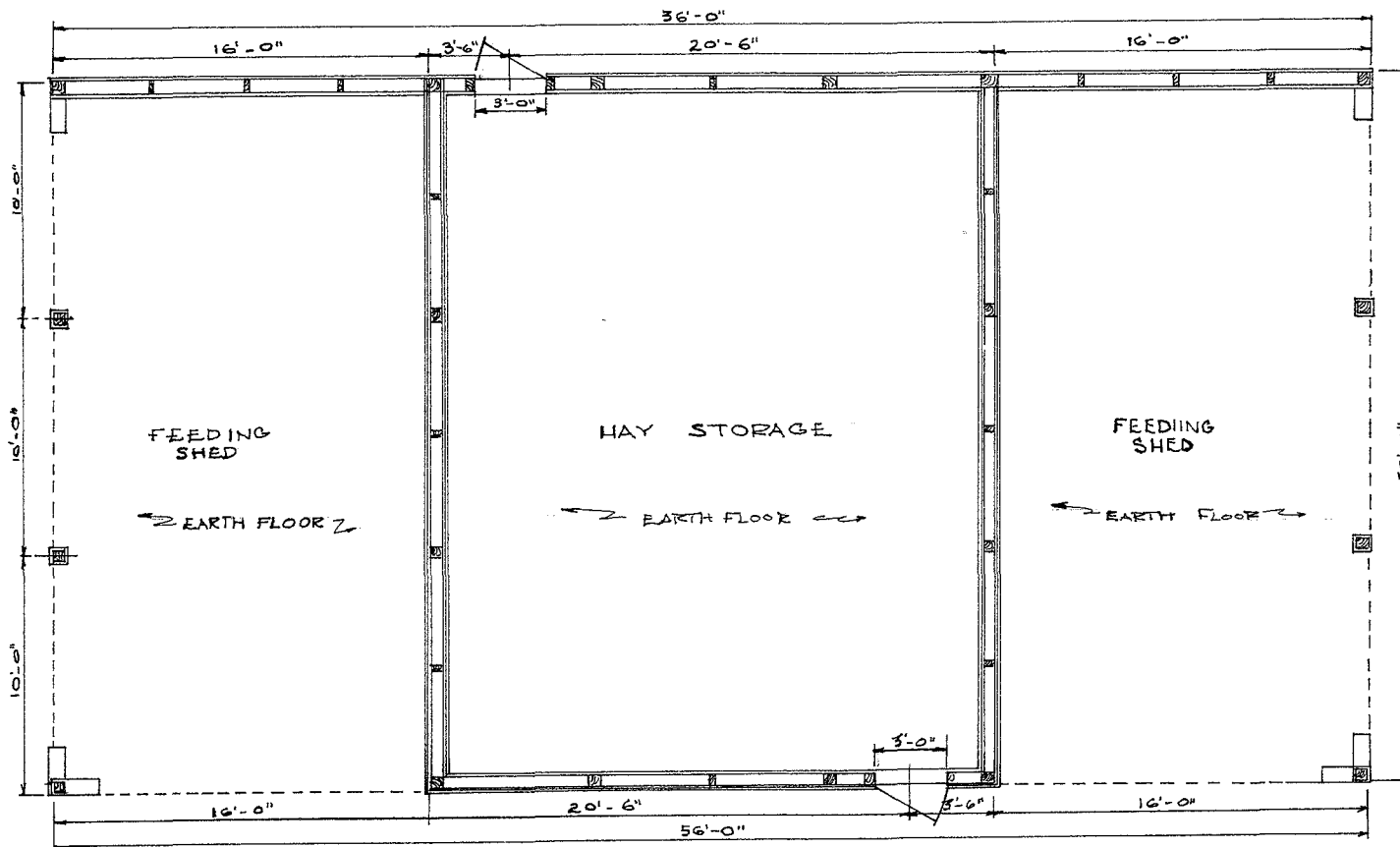
WEST ELEVATION
SCALE 1/8" = 1'-0"

DOTTED LINE INDICATES HOW LENGTH
MAY BE INCREASED IN 10'-0" UNITS.

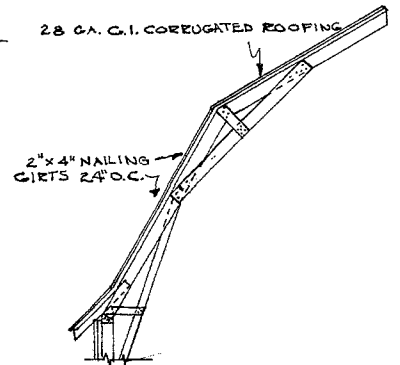
SHOWING HOW SHED MAY
BE EXTENDED ACROSS
END OF BARN.



SOUTH ELEVATION
SCALE: 1/8" = 1'-0"



FLOOR PLAN
SCALE 1/4" = 1'-0"

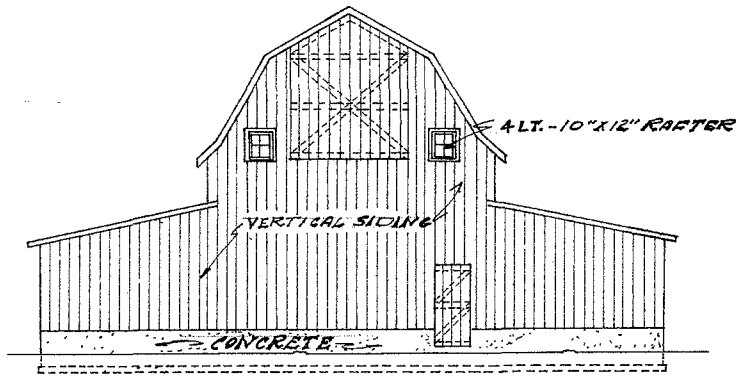


ALTERNATE CONSTRUCTION
FOR METAL ROOFING
SCALE 1/4" = 1'-0"

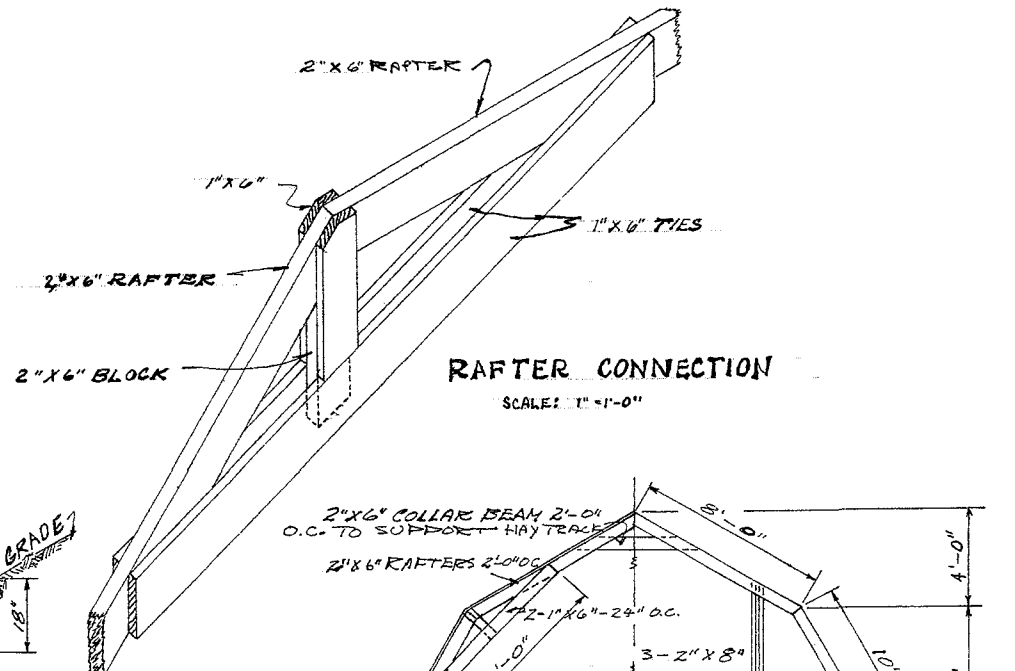


FEEDING BARN

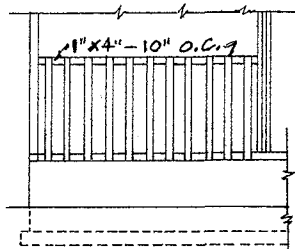
ENGINEER	GA.	SCALE	AS SHOWN
DRAWN BY		SHEET	1 OF 2
TRACED BY	G.N.W. '61	DATE	
		NO.	50-4



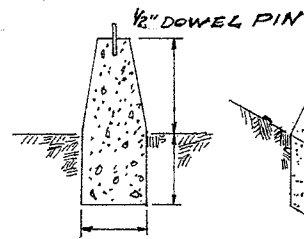
NORTH ELEVATION
SCALE: 1/8" = 1'-0"



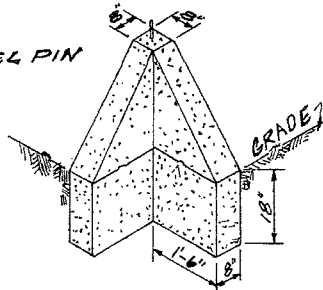
RAFTER CONNECTION
SCALE: 1" = 1'-0"



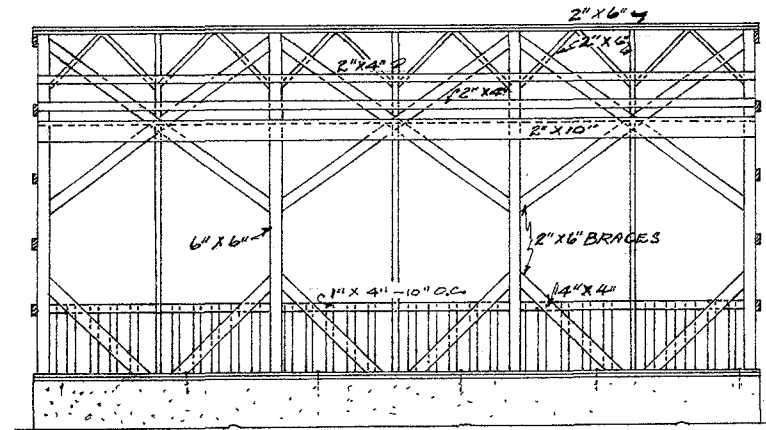
PARTIAL ELEVATION - FEED RACK
SCALE: 1/4" = 1'-0"



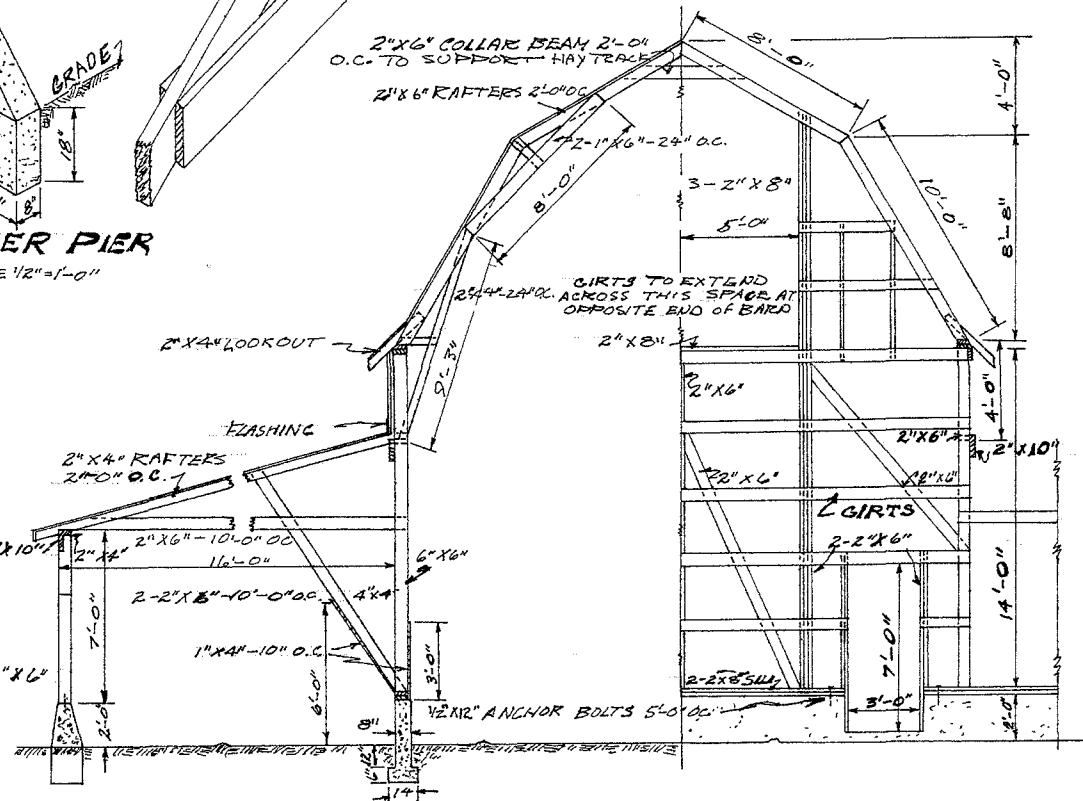
PIER DETAIL
SCALE: 1/2" = 1'-0"



CORNER PIER
SCALE: 1/2" = 1'-0"



SIDE ELEVATION - FRAMING
SCALE: 1/4" = 1'-0"



HALF SECTION & HALF END SECTION
SCALE: 1/4" = 1'-0"



FEEDING BARN

ENGINEER <i>CA</i>	SCALE AS SHOWN
DRAWN BY	SHEET 2 OF 2
TRACED BY <i>CNW-6M</i>	DATE 9-61 NO. 50-4

Disclaimer

This site makes available conceptual plans that can be helpful in developing building layouts and selecting equipment for various agricultural applications. These plans do not necessarily represent the most current technology or construction codes. They are not construction plans and do not replace the need for competent design assistance in developing safe, legal and well-functioning agricultural building system. The LSU Agriculture Center, the Mid-West Plan Service, the United States Department of Agriculture and none of the cooperating land-grant universities warranty these plans.