

DOUBLE WALL BETWEEN STALLS

10 GAGE WELDED WIRE FABRIK

STALL WALLS: SPACED PLANKING TO 5'-0" WELDED WIRE MESH TO 8'-0" WITH A 2"x6" TO HOLD TOP OF MESH

1/2" SPACE FOR AIRFLOW

BEADING TO BE SPREAD ON TOP OF BUILT UP EARTH.

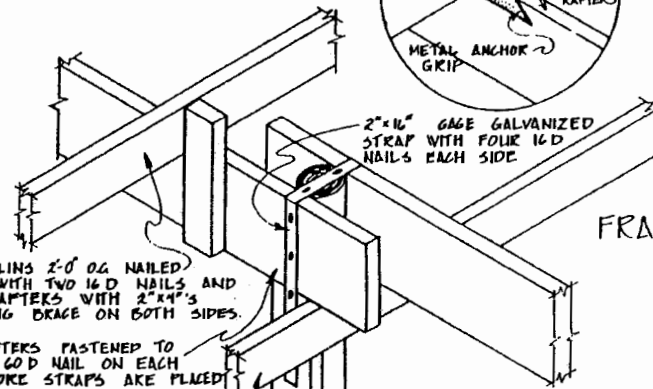
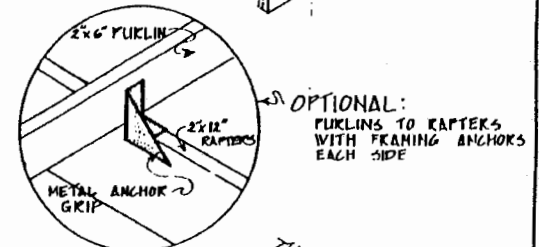
PARTITION/WALL
DETAIL

SCALE 1/2" = 1'-0"

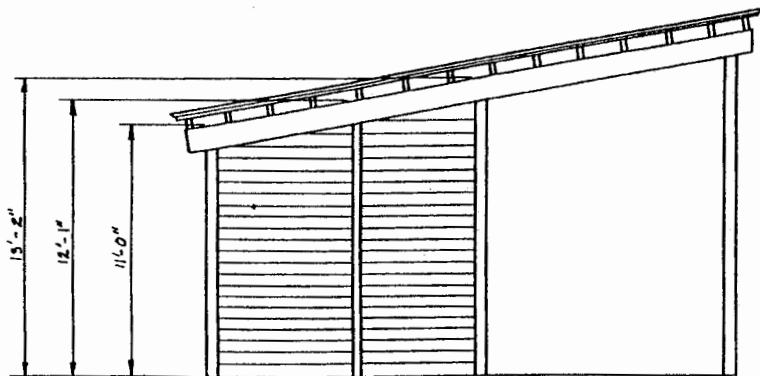
USE 2"x4" OR 2"x6" LUMBER

EXTERIOR PLYWOOD TREATED SPLASHBOARD

SLOPE DOWN TO DRAIN AWAY FROM STALL



FRAMING DETAIL
SCALE 1" = 1'-0"



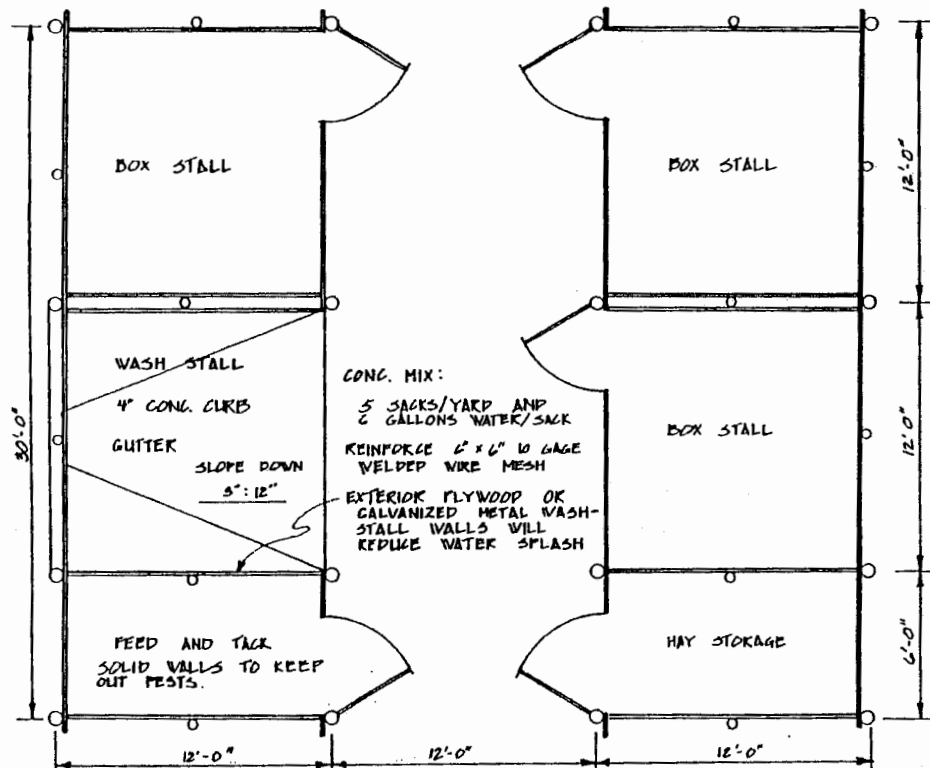
POLE HEIGHTS

WEST VIEW
SCALE 1/4" = 1'-0"



HORSE BARNS FOR HOT HUMID CLIMATE

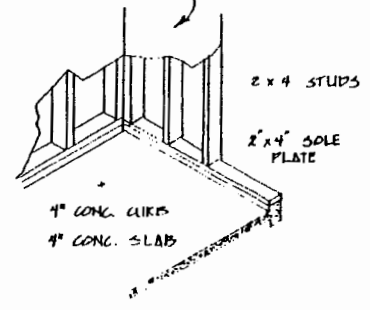
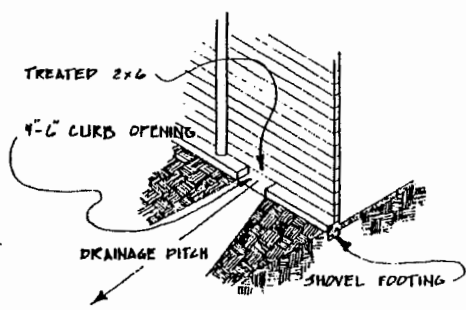
| | |
|----------------------|----------------|
| ENGINEER J.W. BRANCH | SCALE AS SHOWN |
| DRAWN BY W.A.P. | SHEET 1 OF 2 |
| TRACED BY W.A.P. | DATE NO 5B-4 |



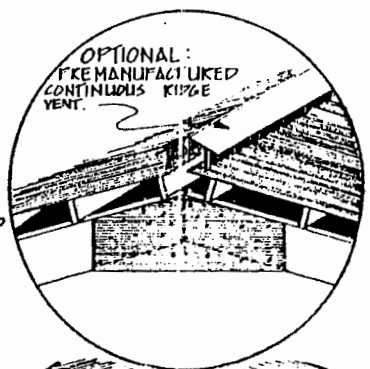
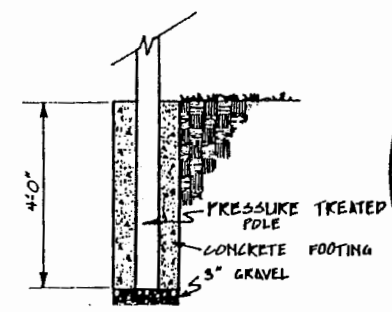
PLAN
SCALE 1/4" = 1'-0"

NOTE: BUILD INTERIOR WASHSTALL WALLS WATER TIGHT.

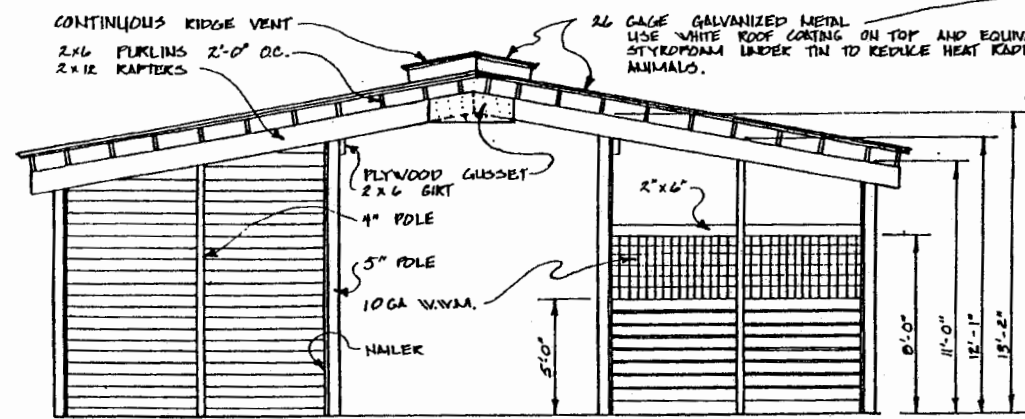
EXTERIOR PLYWOOD OR SHEET METAL.



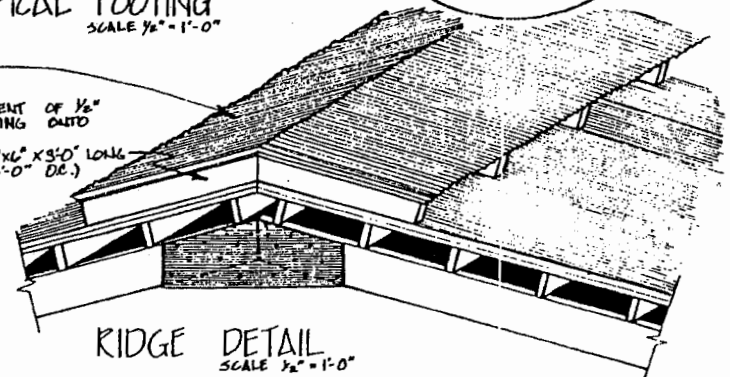
WASHSTALL WALL ALTERNATIVES



TYPICAL FOOTING
SCALE 1/2" = 1'-0"



WEST ELEVATION
SCALE 1/4" = 1'-0"



RIDGE DETAIL
SCALE 1/2" = 1'-0"

NOTE: DESIGN FOR TIMBER OF MINIMUM STRENGTH F = 1500 PSI.



HORSEBARN'S FOR HOT HUMID CLIMATE

| | |
|--------------------|----------------|
| ENGINEER B. BRANCH | SCALE AS SHOWN |
| DRAWN BY WAP | SHEET 2 OF 2 |
| TRACED BY WAP | DATE |
| | NO 58-4 |

Disclaimer

This site makes available conceptual plans that can be helpful in developing building layouts and selecting equipment for various agricultural applications. These plans do not necessarily represent the most current technology or construction codes. They are not construction plans and do not replace the need for competent design assistance in developing safe, legal and well-functioning agricultural building system. The LSU Agriculture Center, the Mid-West Plan Service, the United States Department of Agriculture and none of the cooperating land-grant universities warranty these plans.