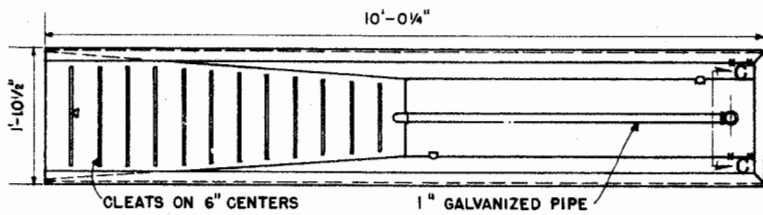


**LSU**  
**AgCenter**  
Research & Extension

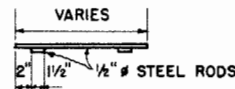
**PORTABLE DIPPING VAT FOR SHEEP**

USDA '66 EX. 5999 SHEET 1 OF 3

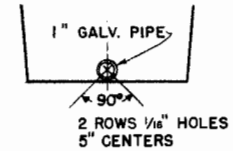
NOTE: DEVELOPED AND BUILT BY TECHNICAL SERVICES, ANIMAL HEALTH DIVISION, A.R.S., USDA, THRU MODIFICATION OF PREL. PLANS, PENN. ST. UNIV.



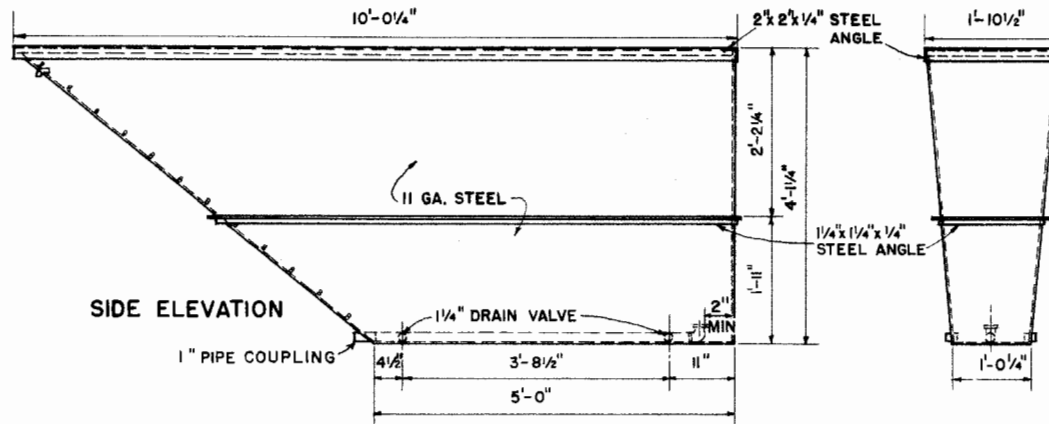
PLAN



CLEATS  
SCALE: 1" = 1'-0"



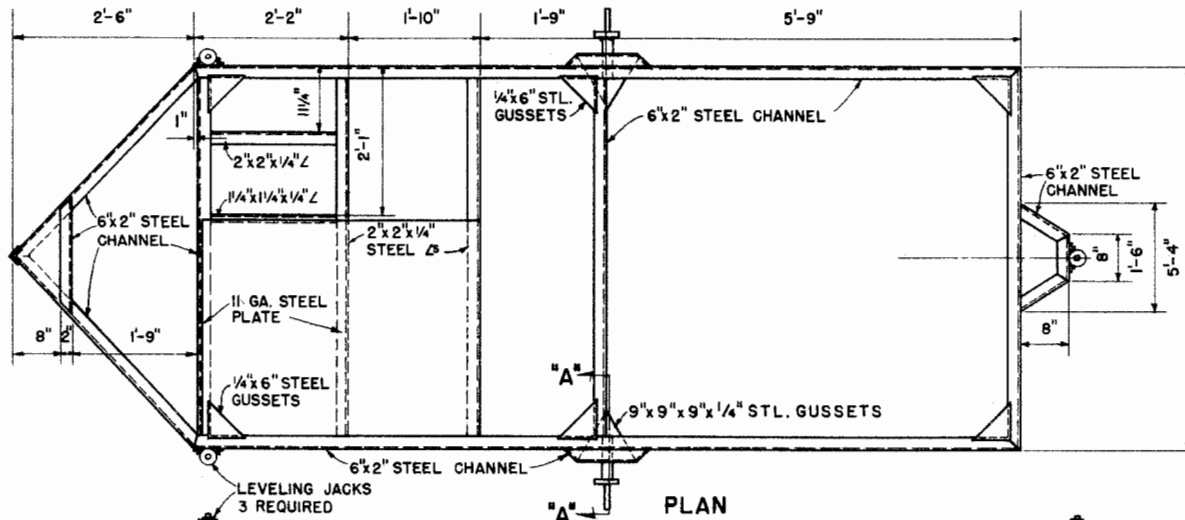
SECTION "C-C"  
SCALE: 1/2" = 1'-0"



SIDE ELEVATION

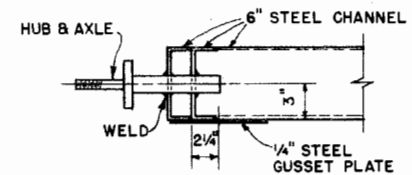
END ELEVATION

DETAILS OF DIPPING TANK

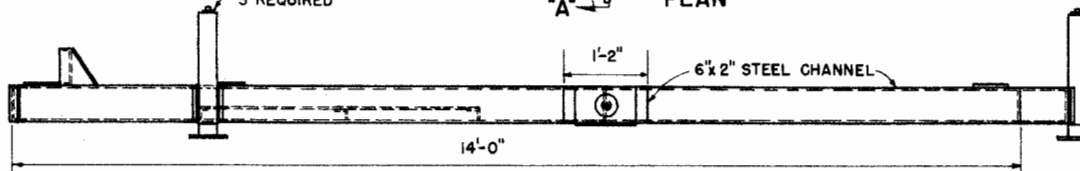


PLAN

LEVELING JACKS  
3 REQUIRED  
SCALE: 3/4" = 1'-0"



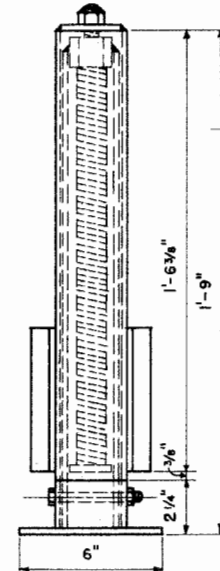
SECTION "A-A"  
SCALE: 1/2" = 1'-0"



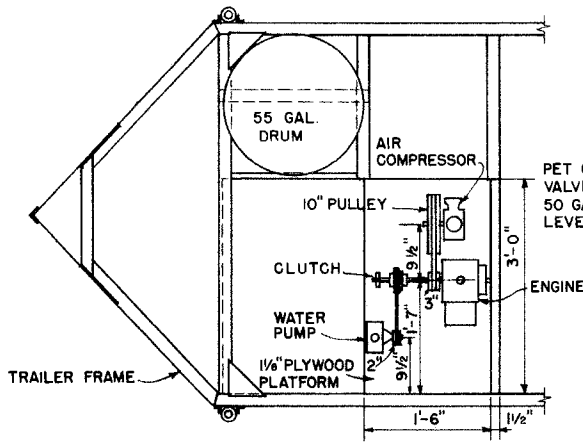
SIDE ELEVATION  
DETAILS OF TRAILER FRAME

**MATERIAL LIST  
LEVELING JACKS  
(PER JACK)**

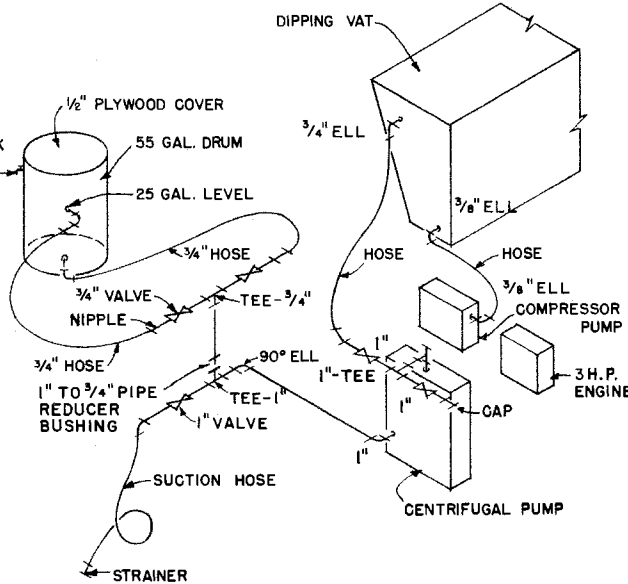
- 1- 2 1/2" GALV. PIPE 18 3/4" LG.
- 1- 2 1/2" GALV. PIPE 2" LG.
- 1- 2" GALV. PIPE 19 3/4" LG.
- 1- 1/4" x 4" x 6" STEEL PLATE
- 1- 3/8" x 3 1/2" BOLT
- 1- 1/4" SQ. THREAD SHAFT 19 1/4" LG.
- 1- 1/4" SQ. THREAD NUT
- 1- 5/8" NUT
- 1- 1/4" x 1 3/4" DIAMETER STOP
- 1- 1/4" x 2 1/2" DIAMETER STOP
- 2- 1 1/2" x 1 1/4" STEEL ANGLE



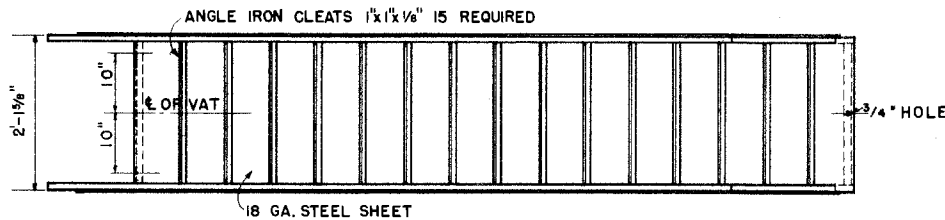
**PORTABLE DIPPING VAT  
FOR SHEEP**



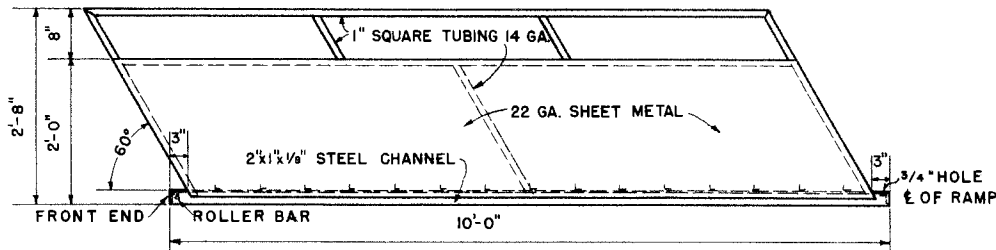
**PLAN**  
SHOWING LOCATION OF ENGINE,  
PUMP, COMPRESSOR, & DRUM



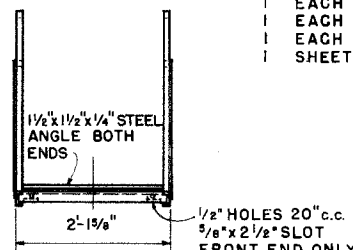
**ISOMETRIC OF  
PLUMBING LAYOUT**  
NO SCALE



**PLAN OF UP RAMP**



**SIDE ELEVATION**



**END ELEVATION**

**MATERIAL LIST**

4	SHEETS	11 GA. MILD STEEL 4'x10'
1	SHEET	18 GA. MILD STEEL 4'x8'
5	SHEETS	22 GA. MILD STEEL 4'x8'
1	SHEET	11 GA. MILD STEEL CHECKERED PLATE 4'x8'
3	PIECES	MILD STEEL CHANNEL IRON 6'x2'x20'x1/4"
2	PIECES	MILD STEEL CHANNEL IRON 2'x1'x20'x1/8"
4	PIECES	MILD STEEL ANGLE IRON 1'x1'x1/2'x20'
4	PIECES	MILD STEEL ANGLE IRON 2'x2'x1/4'x20'
4	PIECES	MILD STEEL ANGLE IRON 1'x1'x1/4'x20'
1	PIECES	MILD STEEL BAR STOCK 1/4'x1/2'x20'
1	PIECES	MILD STEEL BAR STOCK 1/2'x1/2'x4'
1	PIECE	MILD STEEL BAR STOCK 1/4'x6'x10'
1	SHEET	EXPANDED METAL (4 LBS. PER FOOT) 4'x8'
14	PIECES	1" SQUARE TUBING, 14 GA. x 20'
3	PIECES	1/2" SQUARE TUBING, 14 GA. x 20'
2	PIECE	1/2" ROUND ROD 20'
1	PIECE	1/4" ROUND ROD 20'
1	LENGTH	GALVANIZED PIPE 1'x21'
3	EACH	1" PIPE, GALVANIZED, ELBOW 90°
2	EACH	1" PIPE, GALVANIZED, CAP
2	EACH	1" PIPE, GALVANIZED, TEE
1	EACH	1" TO 3/4" PIPE REDUCER BUSHING
3	EACH	1" PIPE, GALVANIZED, NIPPLES 3"
1	EACH	1" GLOBE VALVE & 1" CHECK VALVE
2	EACH	1/2" GLOBE VALVE
1	LENGTH	1" SUCTION HOSE WITH COUPLINGS 15' LONG
1	LENGTH	3/4" HEAVY DUTY HOSE 25' LONG
1	EACH	55 GAL. DRUM & 1 MANUAL CLUTCH (DISC.)
1	EACH	CENTRIFUGAL PUMP, SELF PRIMING, 25 GAL. PER MIN.
1	EACH	3 H.P. ENGINE & 4 ENGINE MTG. PADS (NO. 8 RUB. CORK)
1	EACH	V-BELT & 1 EA. 2" V BELT PULLEY WHEEL 3/4" BORE
1	EACH	COMPRESSOR PUMP, AIR, 3 CU. FT. PER MIN.
1	EACH	AXEL SPINDLE 3/4" x 7 1/2"
1	EACH	FREE ROLL HUB 3/4" BORE I.D.
1	EACH	WHEEL, TIRE AND TUBE, 10" DIA.
1	EACH	TRAILER HITCH, HEAVY DUTY, 5000 LB. GROSS
1	EACH	SAFETY CHAIN 3/4"x10' LG. WITH 2 HOOKS
1	KIT	STOPLIGHT AND TURN SIGNAL KIT
2	EACH	3" REFLECTORS
1	EACH	COIL 16 GA. PLASTIC COVERED AUTO WIRE
6	EACH	HOSE CLAMP 3/4"
3	EACH	HOSE CLAMP 1"
2	EACH	WHEEL, TIRE AND TUBE, 600 x 16" x 6 PLY
2	EACH	AXEL SPINDLE
2	EACH	HUB
3	BOXES	WELDING ELECTRODE 1/8" AC OR DC, 10 LB.
1	BOXES	WELDING ELECTRODE 5/32 AC OR DC, 10 LB.
1	PIECE	1" PLASTIC PIPE 5' LONG
6	QUARTS	RED LEAD PRIMER PAINT, 1 QT. EPOXY PRIMER, PAINT
300	EACH	POP RIVETS 1/8" DIA. x 1/4" LONG
100	EACH	POP RIVETS 1/8" DIA. x 3/8" LONG
2	PAIR	HINGES, HEAVY DUTY 8" T
2	PAIR	HINGES, HEAVY DUTY 4"x6" BUTT
1	PAIR	HINGES, HEAVY DUTY 2"x2" BUTT
1	PAIR	HINGES, HEAVY DUTY 4" T
1	EACH	HASP 4"
1	EACH	3/4" GALV. PIPE NIPPLE 4" LONG
2	EACH	3/4" GALV. PIPE NIPPLE 2" LONG
3	EACH	3/4" GLOBE VALVES
1	EACH	3/4" GALV. PIPE TEE
4	EACH	3/4" GALV. PIPE COUPLING
4	EACH	3/4" GALV. PIPE TO HOSE COUPLING
1	EACH	3/8" GALV. PIPE 90° ELL
1	EACH	3/8" GALV. PIPE NIPPLE 2" LONG
2	EACH	1 1/2" GALV. PIPE COUPLING 2" LONG
1	EACH	1" GALV. PIPE COUPLING
1	EACH	REMOTE CONTROL THROTTLE
1	EACH	RUBBER WEATHERSTRIPPING 5/16" x 3/4" x 8'
1	SHEET	EXTERIOR PLYWOOD 1/2" x 4' x 8'

SCALE: 3/4"=1'-0" UNLESS OTHERWISE NOTED.



**PORTABLE DIPPING VAT  
FOR SHEEP**

USDA '66 EX. 5999 SHEET 3 OF 3

## Disclaimer

This site makes available conceptual plans that can be helpful in developing building layouts and selecting equipment for various agricultural applications. These plans do not necessarily represent the most current technology or construction codes. They are not construction plans and do not replace the need for competent design assistance in developing safe, legal and well-functioning agricultural building system. The LSU Agriculture Center, the Mid-West Plan Service, the United States Department of Agriculture and none of the cooperating land-grant universities warranty these plans.