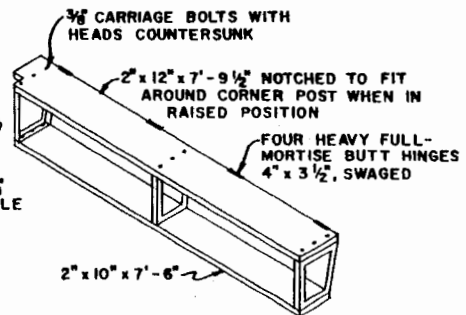
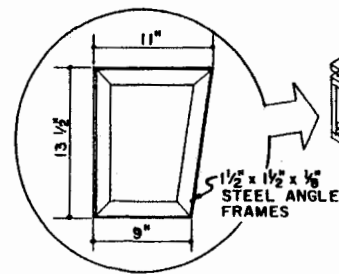


REAR HINGED SHELF UNIT

TWO REQUIRED

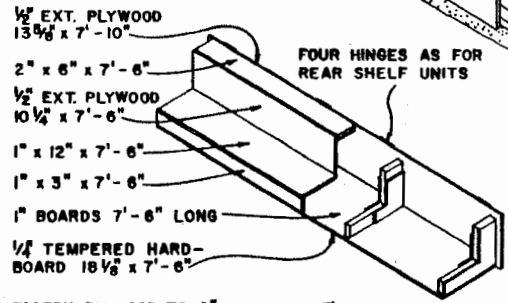


THREE GALVANIZED STRAP OR TEE HINGES

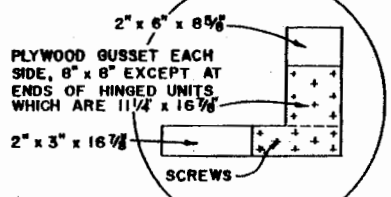
PROVIDE EYE BOLTS 4'-3" APART TO SUIT HOOKS OR PULLEYS ON SIDES OF RAFTERS

HINGED COVER

TWO REQUIRED



FASTEN PLYWOOD TO 2" MEMBERS WITH SCREWS




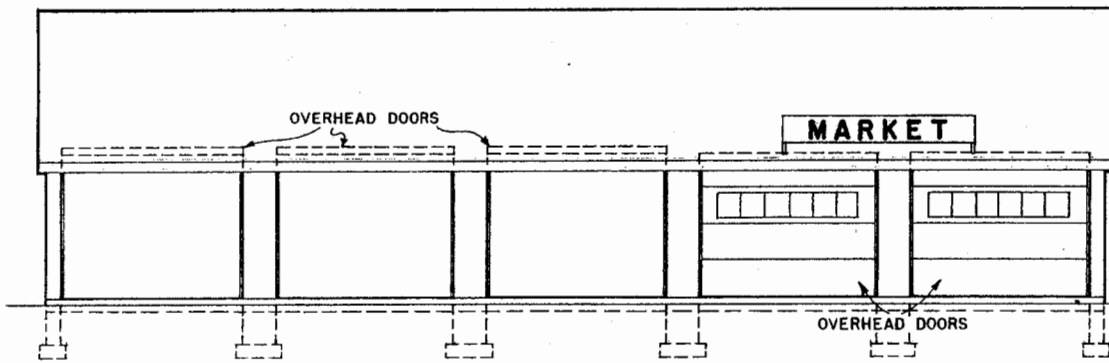
COUNTER-DISPLAY UNIT

TWO REQUIRED

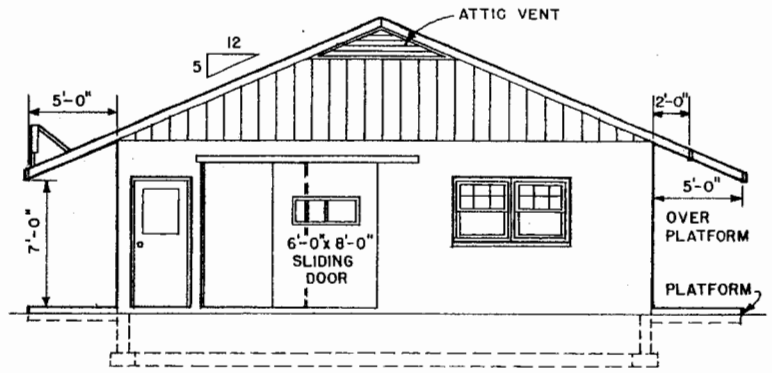
VIEW SHOWING CONSTRUCTION

CUT AWAY FOR CLARITY

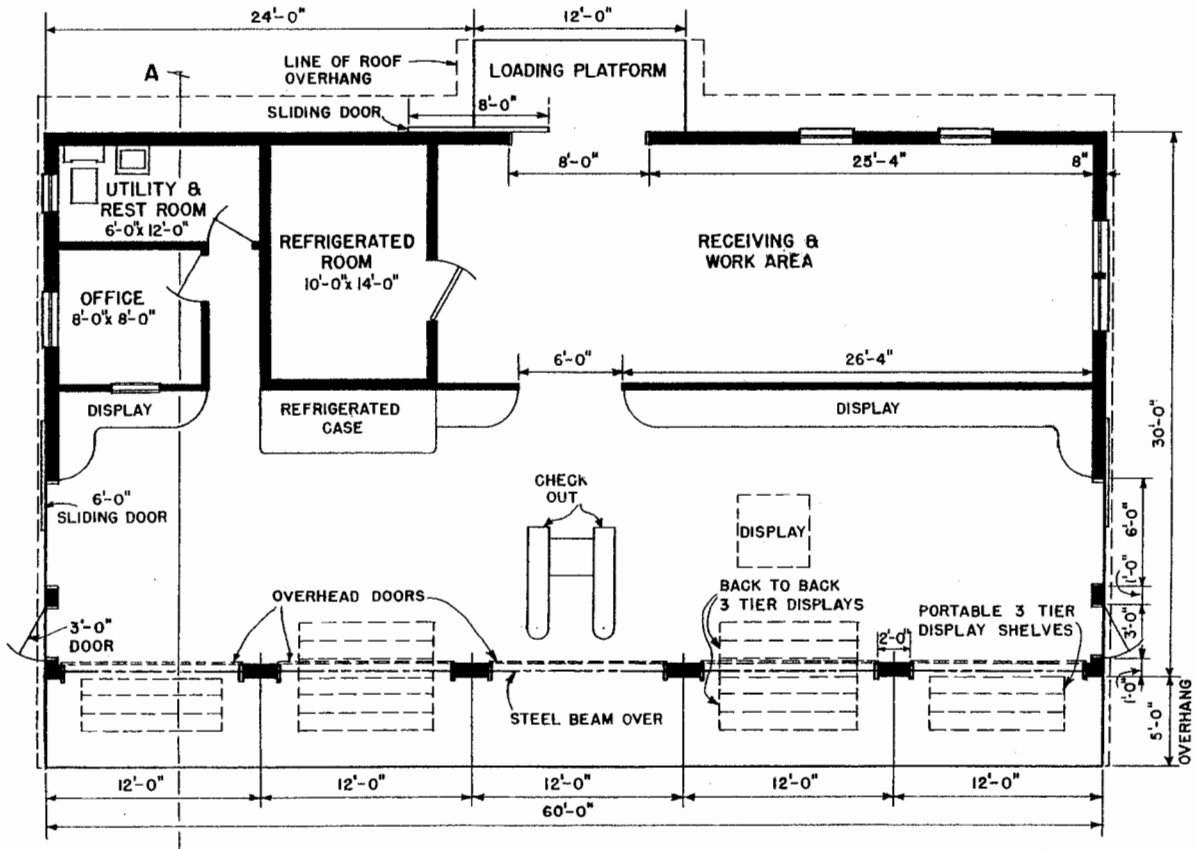
 FSU AgCenter <small>Research & Extension</small>		
ROADSIDE STAND 8'-0" x 16'-0"		
USDA	EX. 5983	SHEET 2 OF 2



FRONT ELEVATION
SCALE 3/16" = 1'-0"

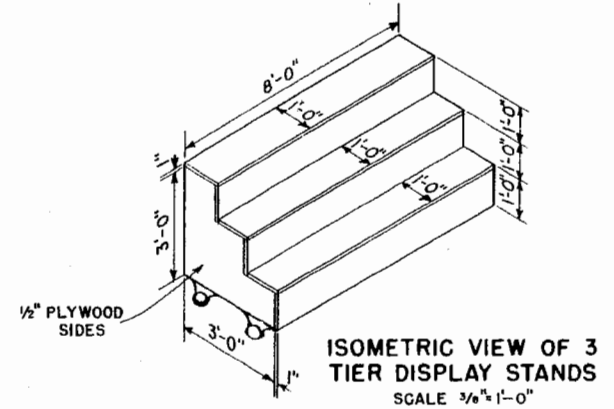


RIGHT SIDE ELEVATION
SCALE 3/16" = 1'-0"



PLAN
SCALE 3/16" = 1'-0"

NOTE: DIMENSIONS SHOWN ARE NOMINAL,
1"x12" LUMBER MAY BE USED.

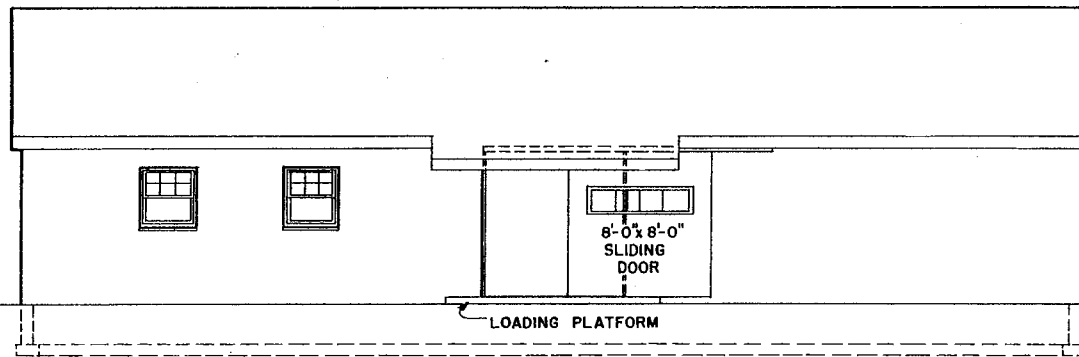


**ISOMETRIC VIEW OF 3
TIER DISPLAY STANDS**
SCALE 3/16" = 1'-0"

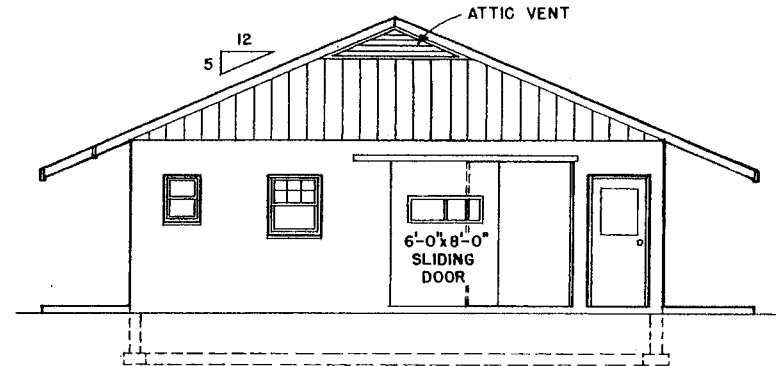


ROADSIDE MARKET

N.J. EX. 6027 SHEET 1 OF 3

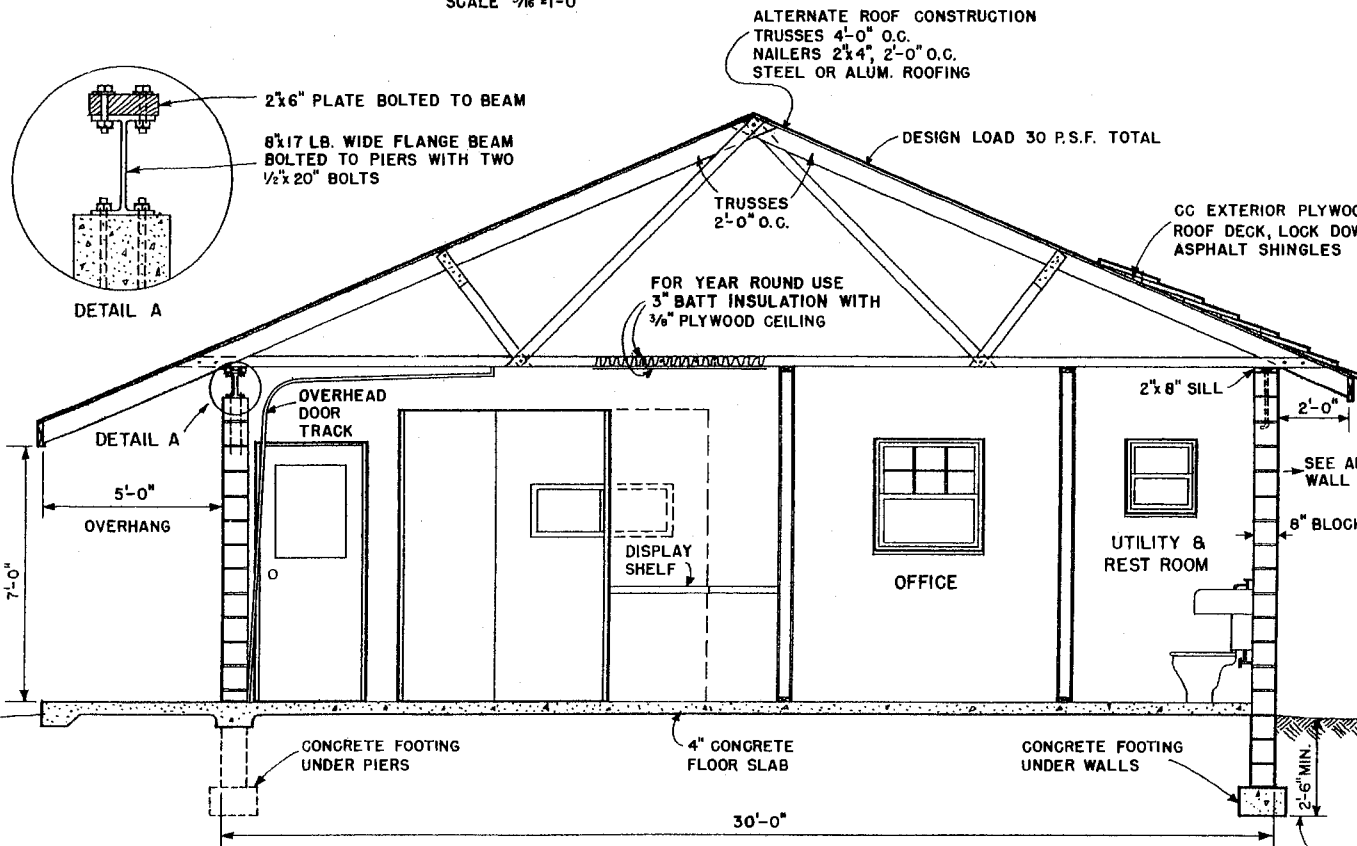


REAR ELEVATION
SCALE $\frac{3}{16}'' = 1'-0''$



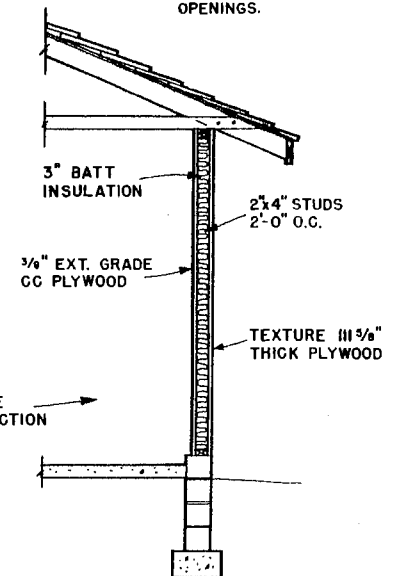
LEFT SIDE ELEVATION
SCALE $\frac{3}{16}'' = 1'-0''$

NOTE: REINFORCED CONCRETE LINTELS OVER END WALL OPENINGS.



SECTION A-A
SCALE $\frac{3}{16}'' = 1'-0''$

NOTE: PIERS ARE CAST CONCRETE OR PILASTER BLOCKS WITH CORES FILLED. REINFORCE WITH TWO 1/2" RODS WHICH EXTEND INTO FOOTING.



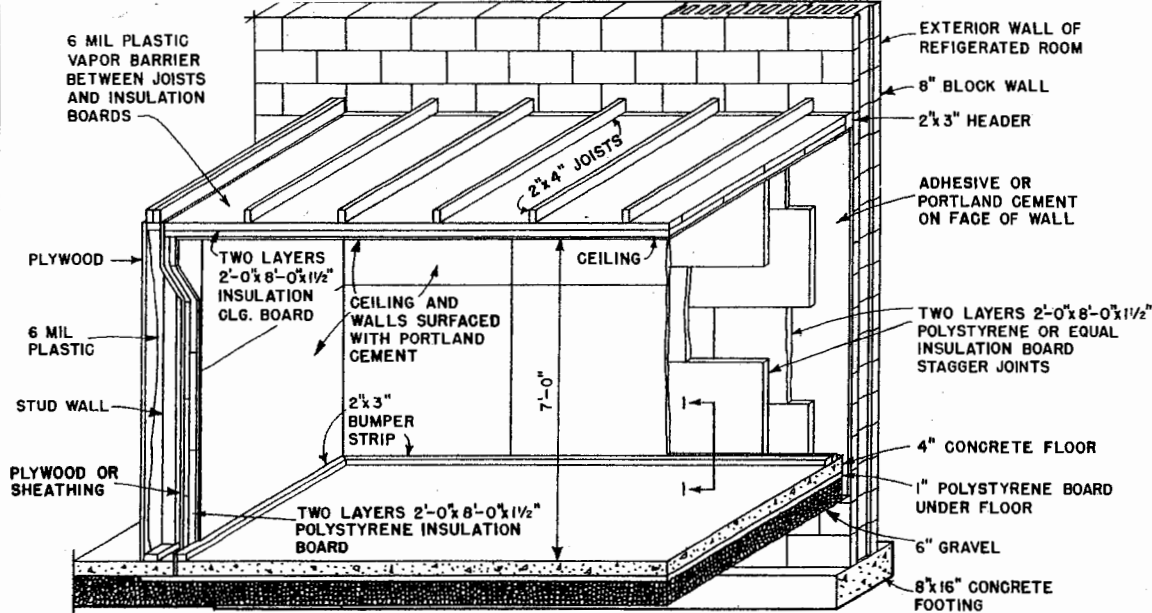
ALTERNATE STUD WALL CONSTRUCTION
SCALE $\frac{3}{16}'' = 1'-0''$

FOOTING TO BE BELOW FROST LEVEL



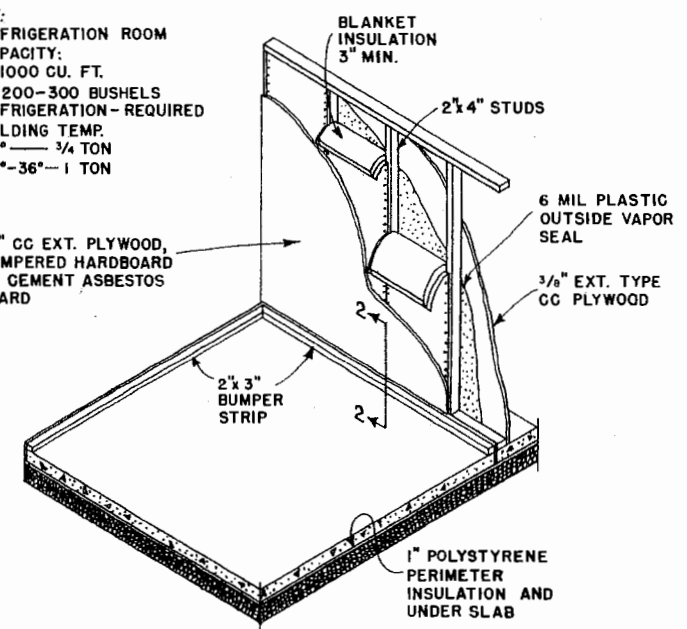
ROADSIDE MARKET

N.J. EX. 6027 SHEET 2 OF

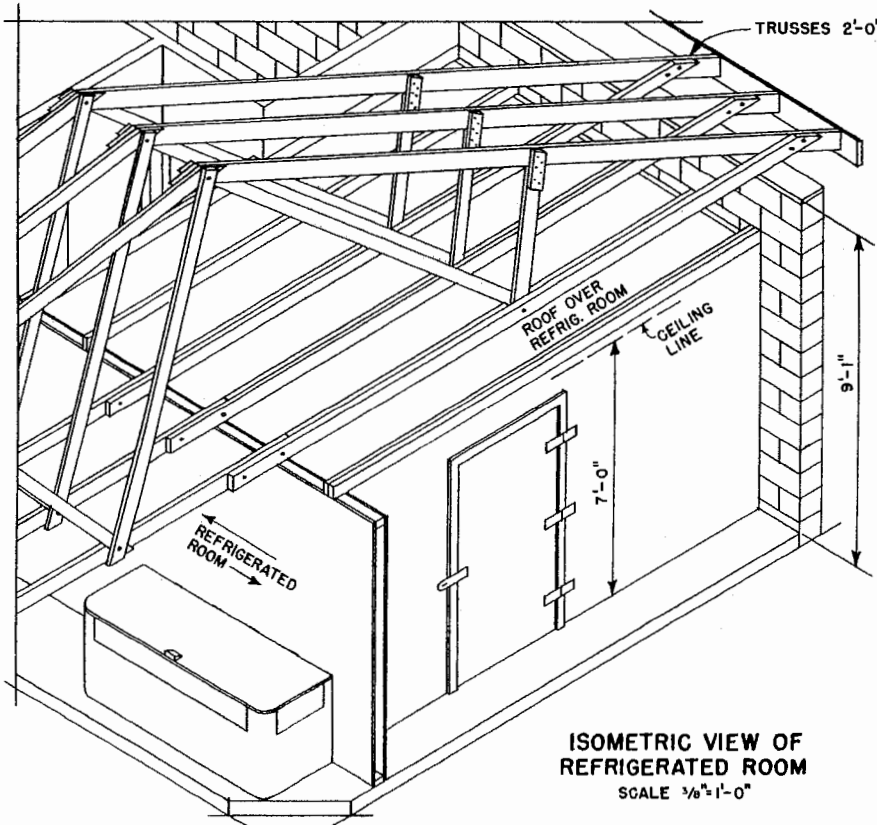


CUT AWAY VIEW THROUGH REFRIGERATED ROOM
SCALE 1/2" = 1'-0"

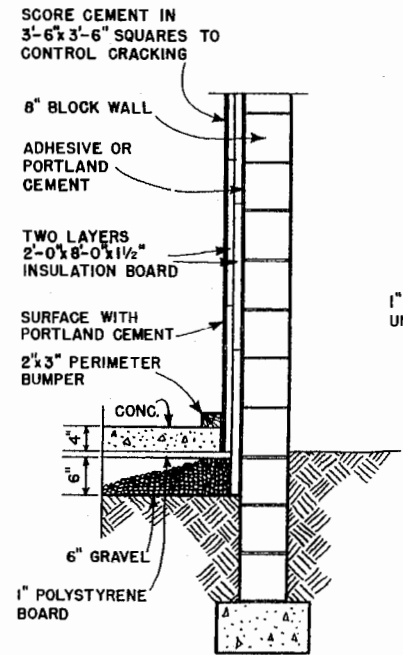
NOTE:
REFRIGERATION ROOM CAPACITY: 1000 CU. FT.
200-300 BUSHELS REFRIGERATION - REQUIRED
HOLDING TEMP. 55° — 3/4 TON
32°-36° — 1 TON



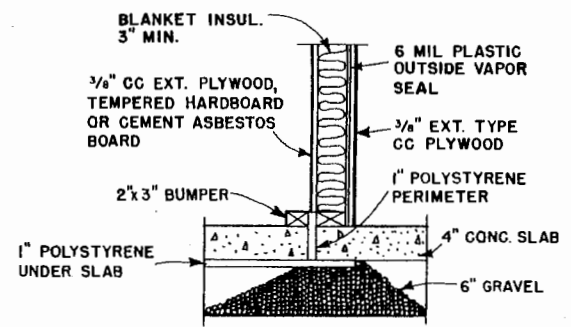
ALTERNATE VIEW THROUGH STUD WALL CONSTRUCTION
SCALE 3/8" = 1'-0"



ISOMETRIC VIEW OF REFRIGERATED ROOM
SCALE 3/8" = 1'-0"



SECTION 1-1
SCALE 3/4" = 1'-0"



SECTION 2-2
SCALE 1" = 1'-0"

Disclaimer

This site makes available conceptual plans that can be helpful in developing building layouts and selecting equipment for various agricultural applications. These plans do not necessarily represent the most current technology or construction codes. They are not construction plans and do not replace the need for competent design assistance in developing safe, legal and well-functioning agricultural building system. The LSU Agriculture Center, the Mid-West Plan Service, the United States Department of Agriculture and none of the cooperating land-grant universities warranty these plans.