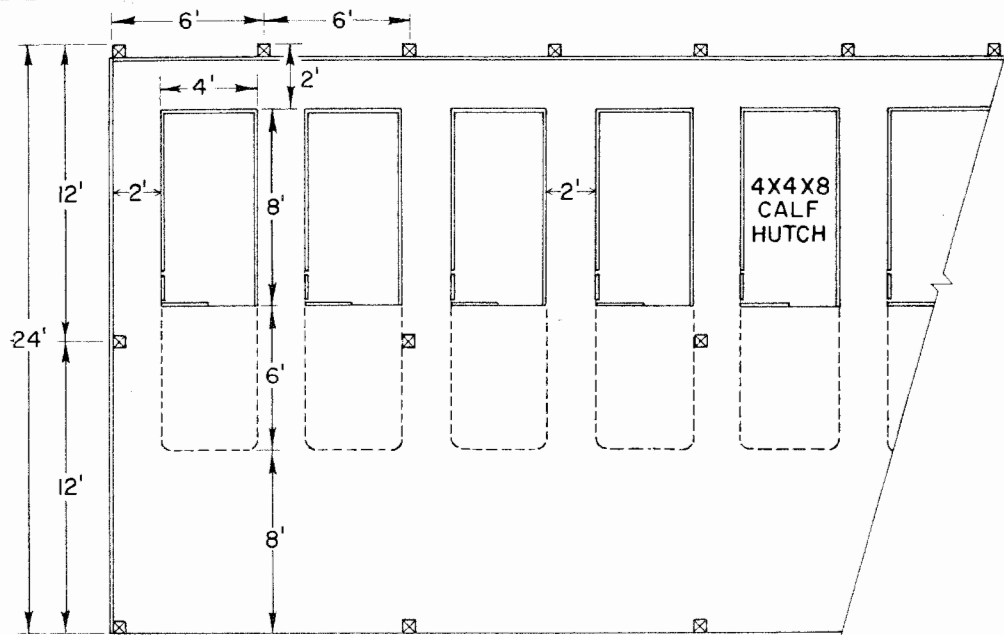
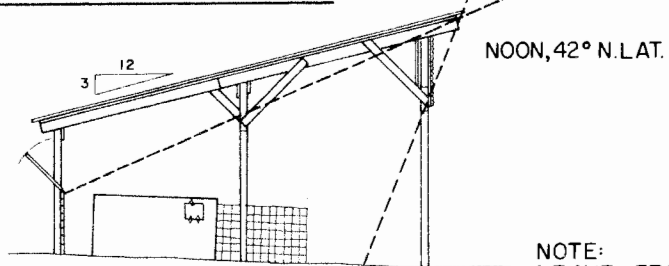


BUTT ENCASED FOOTING



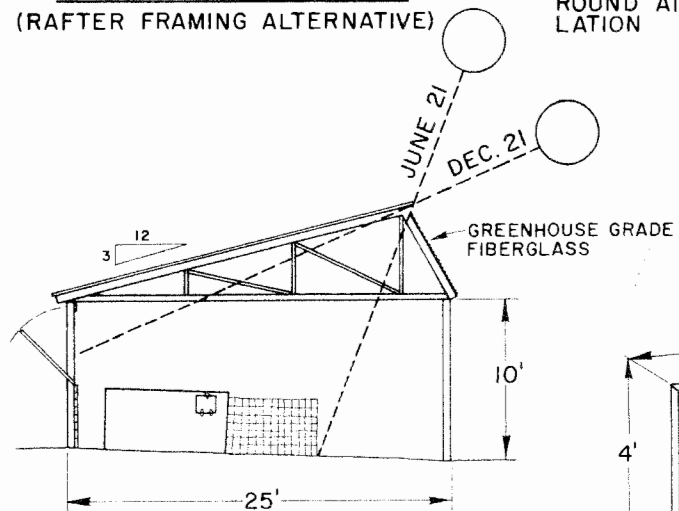
PLAN

SCALE 1/4" = 1'-0"



**SOLAR PENETRATION
(RAFTER FRAMING ALTERNATIVE)**

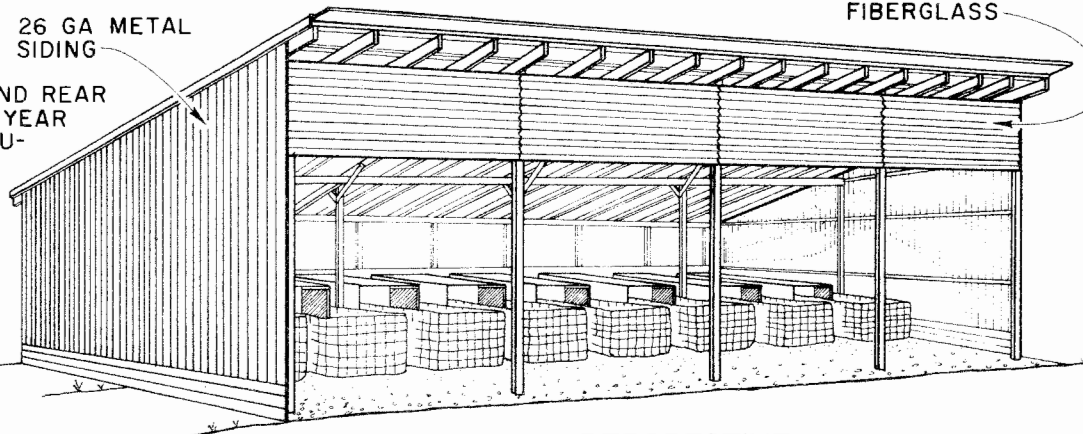
NOTE:
LEAVE FRONT AND REAR
EAVE OPEN FOR YEAR
ROUND AIR CIRCULATION



**SOLAR PENETRATION
(TRUSS FRAMING ALTERNATIVE)**

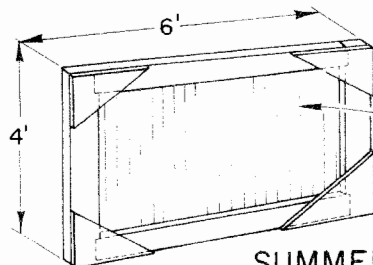
26 GA METAL SIDING

GREENHOUSE GRADE FIBERGLASS



PERSPECTIVE

(SIZED FOR 60 COW HERD)



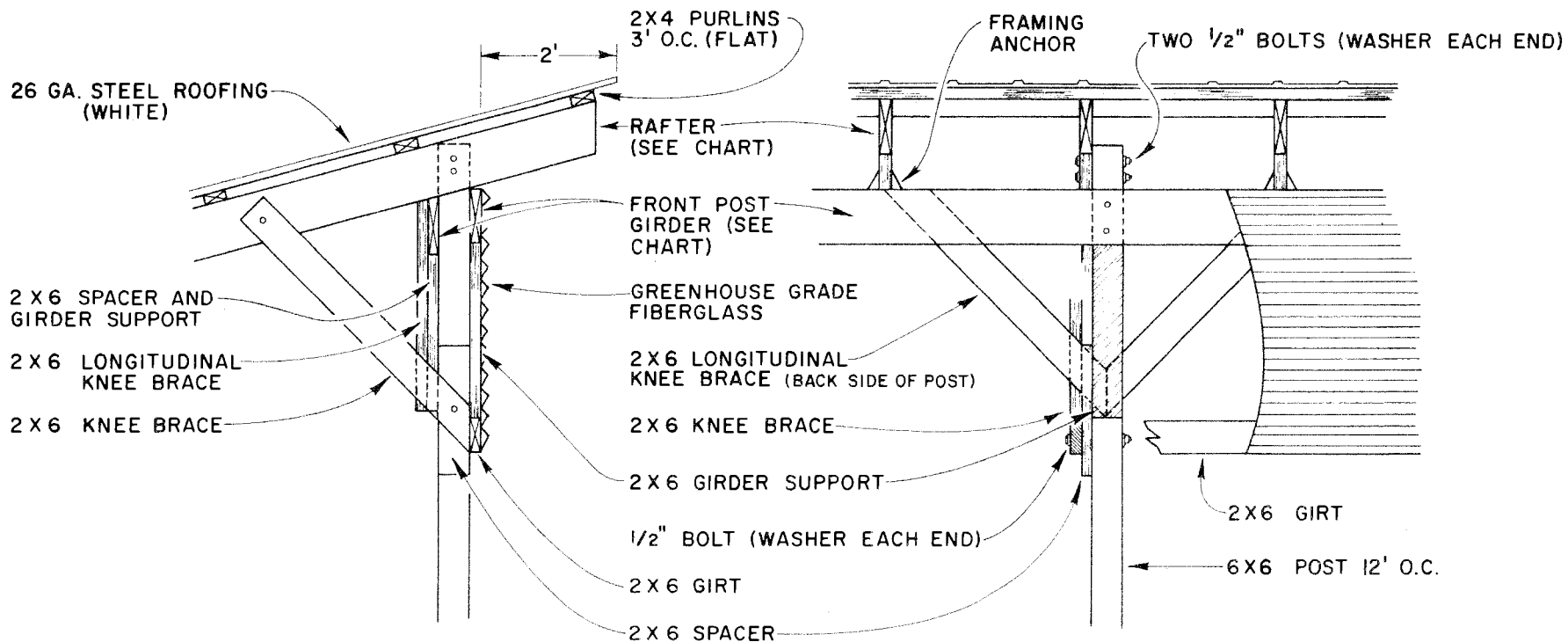
SUMMER VENT DOOR

- 1/2" PLYWOOD GUSSETS
- 26 GA METAL SIDING
- 2 X 6 FRAMING
- GALVANIZED HINGES
(2 EACH DOOR - BOTTOM SIDE)



SOLAR CALF HUTCH SHELTER

WI '85 6374 SHEET 1 OF 2

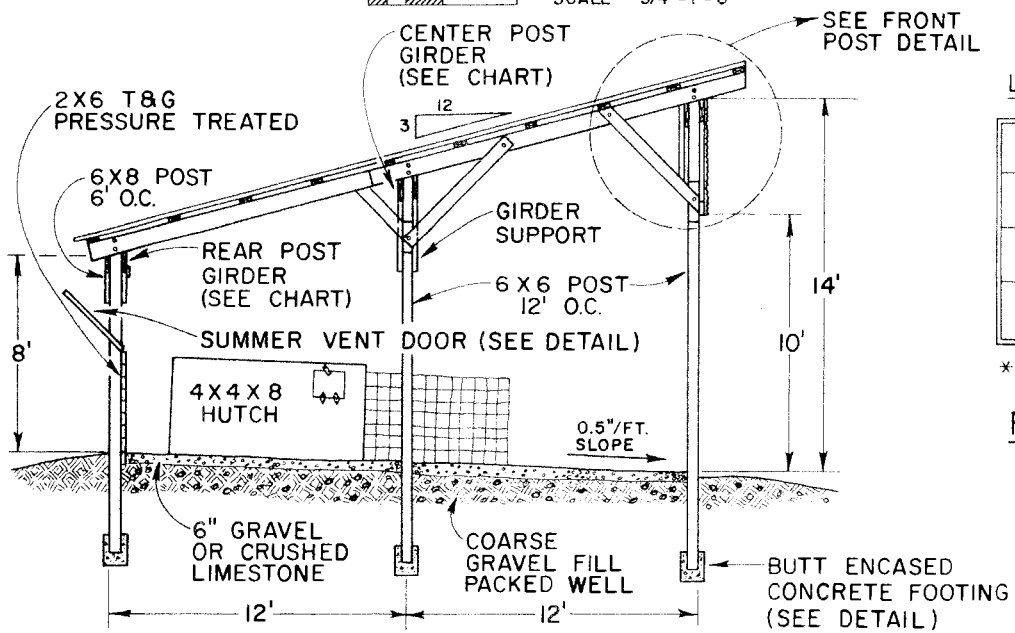


SIDE VIEW: FRONT POST DETAIL

FRONT VIEW: TYPICAL FRONT POST DETAIL

SCALE 3/4" = 1' - 0"

SCALE 3/4" = 1' - 0"



CROSS SECTION

SCALE 1/4" = 1' - 0"

LUMBER SIZES:*

	SOUTHERN PINE & DOUGLAS FIR (NO. 1 OR BETTER)	HEMLOCK (NO. 1 OR BETTER)
RAFTERS	2 X 6 2' O.C. 2 X 8 3' O.C.	2 X 8 2' O.C. 2 X 10 3' O.C.
REAR POST GIRDERS	2(2X6) W. RAFTERS 2' O.C. 2(2X8) W. RAFTERS 3' O.C.	2(2X6) W. RAFTERS 2' O.C. 2(2X8) W. RAFTERS 3' O.C.
CENTER POST GIRDERS	2(2X14) W. RAFTERS 2' O.C. 2(2X12) W. RAFTERS 3' O.C.	2(2X14) W. RAFTERS 2' OR 3' O.C.
FRONT POST GIRDERS	2(2X10) W. RAFTERS 2' O.C. 2(2X8) W. RAFTERS 3' O.C.	2(2X10) W. RAFTERS 2' OR 3' O.C.

* NOTE: THESE LUMBER SIZES ARE FOR A 30 LB. / SQ. FT. SNOW LOAD.

RAFTER & GIRDER CHART



SOLAR CALF HUTCH SHELTER

W1 '85 6374 SHEET 2 OF 2

Disclaimer

This site makes available conceptual plans that can be helpful in developing building layouts and selecting equipment for various agricultural applications. These plans do not necessarily represent the most current technology or construction codes. They are not construction plans and do not replace the need for competent design assistance in developing safe, legal and well-functioning agricultural building system. The LSU Agriculture Center, the Mid-West Plan Service, the United States Department of Agriculture and none of the cooperating land-grant universities warranty these plans.