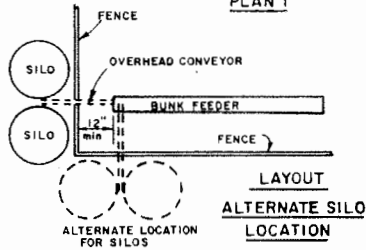


TYPICAL SECTION

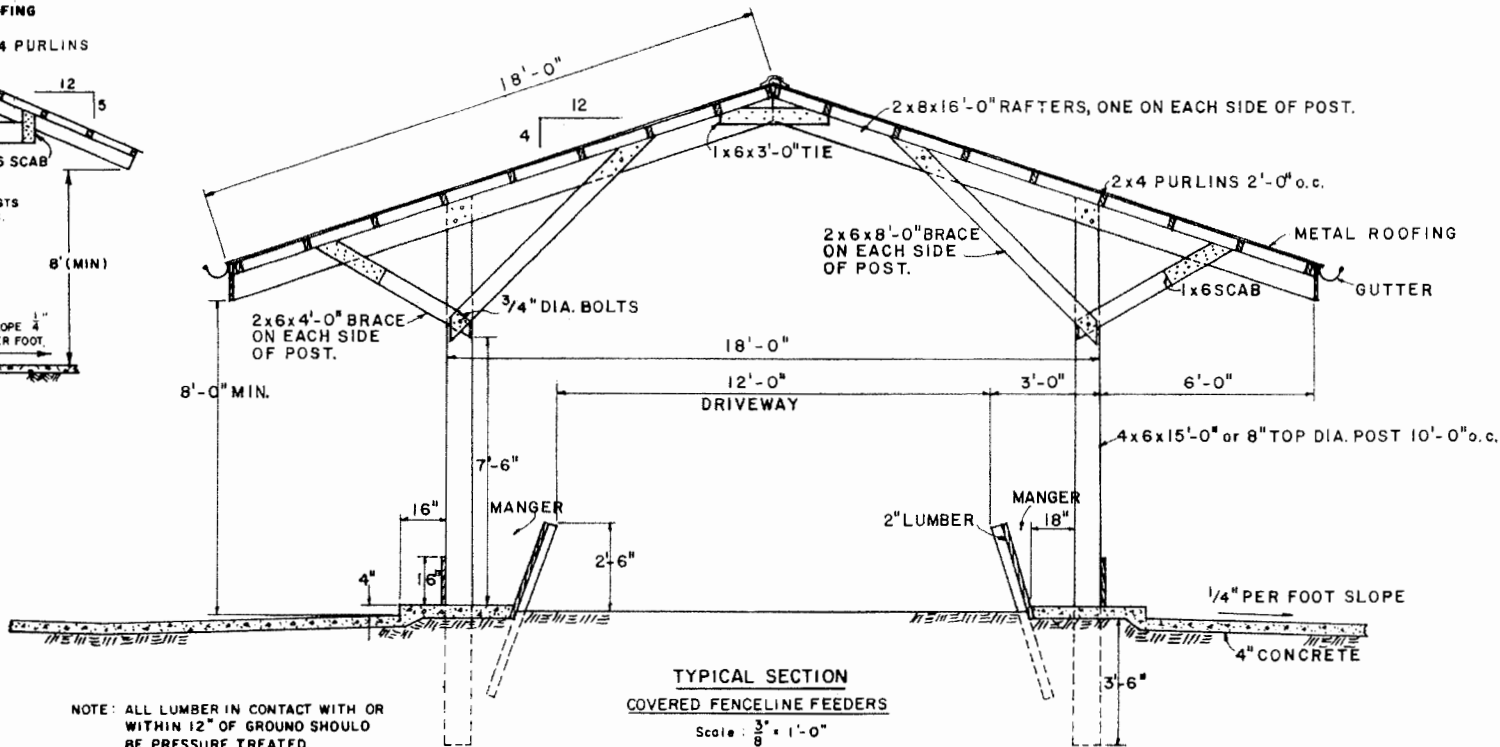
Scale:  $\frac{1}{4}$ " = 1'-0"

PLAN 1



LAYOUT

ALTERNATE SILO LOCATION

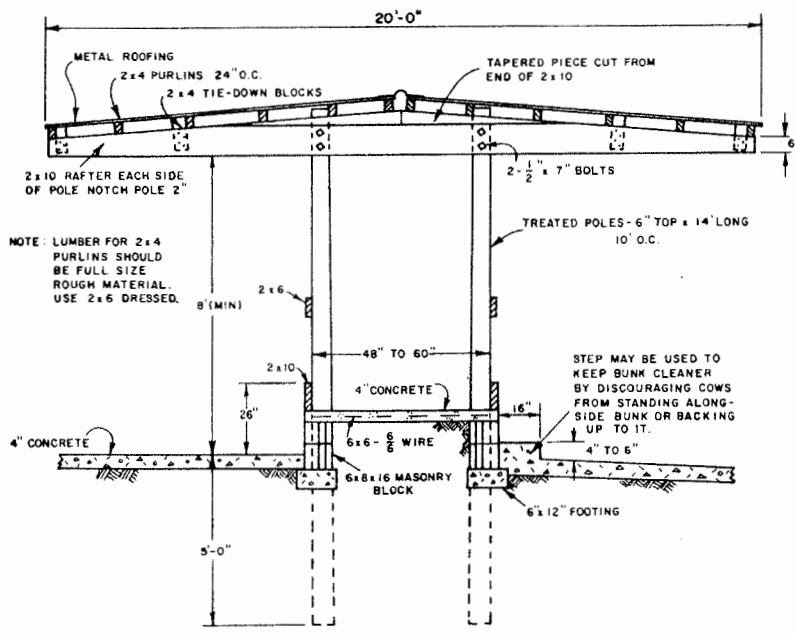


TYPICAL SECTION  
COVERED FENCELINE FEEDERS

Scale:  $\frac{3}{8}$ " = 1'-0"

PLAN 2

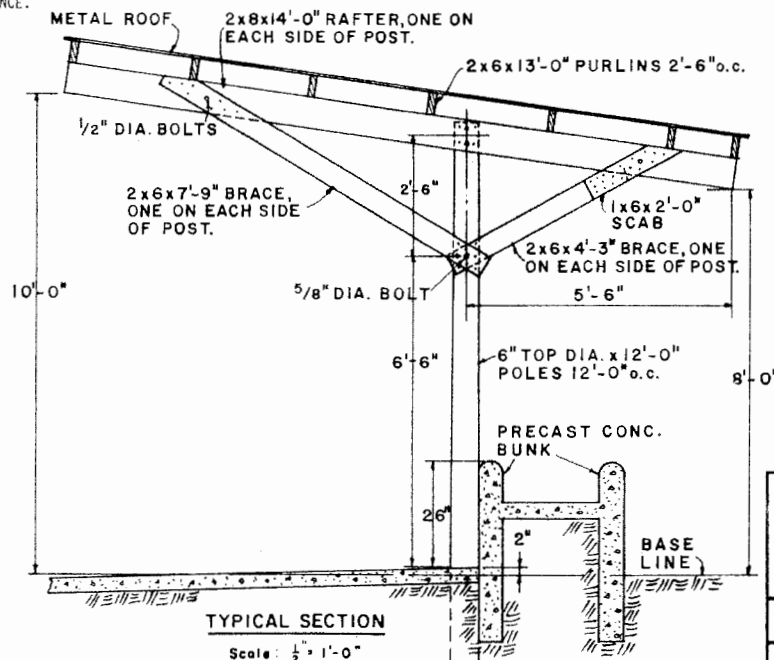
NOTE: ALL LUMBER IN CONTACT WITH OR WITHIN 12" OF GROUND SHOULD BE PRESSURE TREATED.  
CAUTION: SOME PRESSURE TREATED POSTS & LUMBER USE PRESERVATIVE THAT EPA DOES NOT ALLOW IN CONTACT WITH FEED. IN SUCH CASES, PLYWOOD OR PLASTIC SHOULD BE USED AS A LINER. CHECK SUPPLIER OR LABELS FOR GUIDANCE.



TYPICAL SECTION

PLAN 3

Scale:  $\frac{3}{8}$ " = 1'-0"



TYPICAL SECTION

Scale:  $\frac{1}{2}$ " = 1'-0"

PLAN 4

NOTE: CONSULT LOCAL HEALTH AND BUILDING CODE AUTHORITIES BEFORE STARTING CONSTRUCTION

BASED ON: N.C. STATE UNIV. PLAN 2173



SILAGE FEED BUNKS

N.C. '73 EX. 6167 SHEET 1 OF 1

REVISED '88

## Disclaimer

This site makes available conceptual plans that can be helpful in developing building layouts and selecting equipment for various agricultural applications. These plans do not necessarily represent the most current technology or construction codes. They are not construction plans and do not replace the need for competent design assistance in developing safe, legal and well-functioning agricultural building system. The LSU Agriculture Center, the Mid-West Plan Service, the United States Department of Agriculture and none of the cooperating land-grant universities warranty these plans.