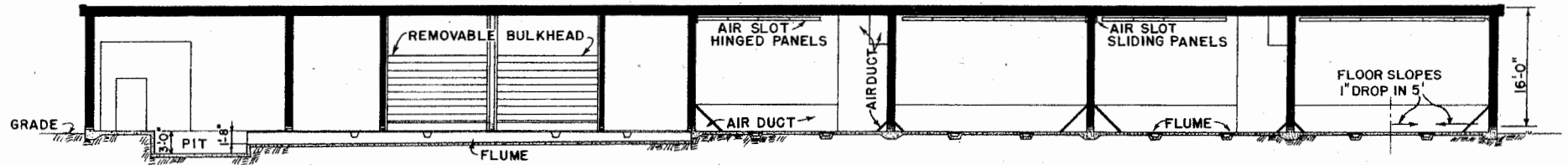


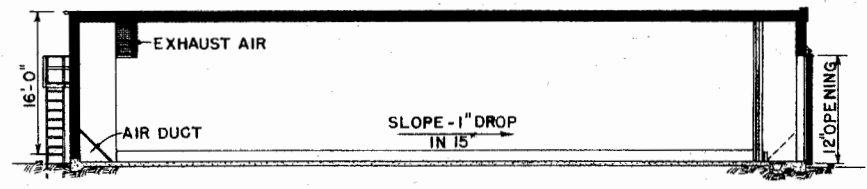
NOTE: WASHER (WATER PRESSURE 40-60 PSI) DRAIN BACK TO PIT.

FLOOR PLAN

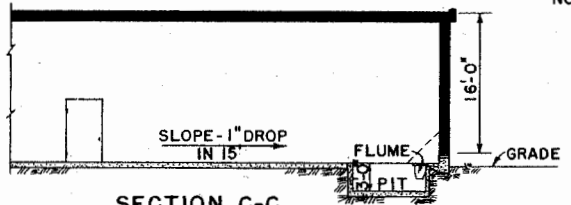
NOTE: ALL EXTERIOR STORAGE WALLS FULLY VENTED.



SECTION A-A



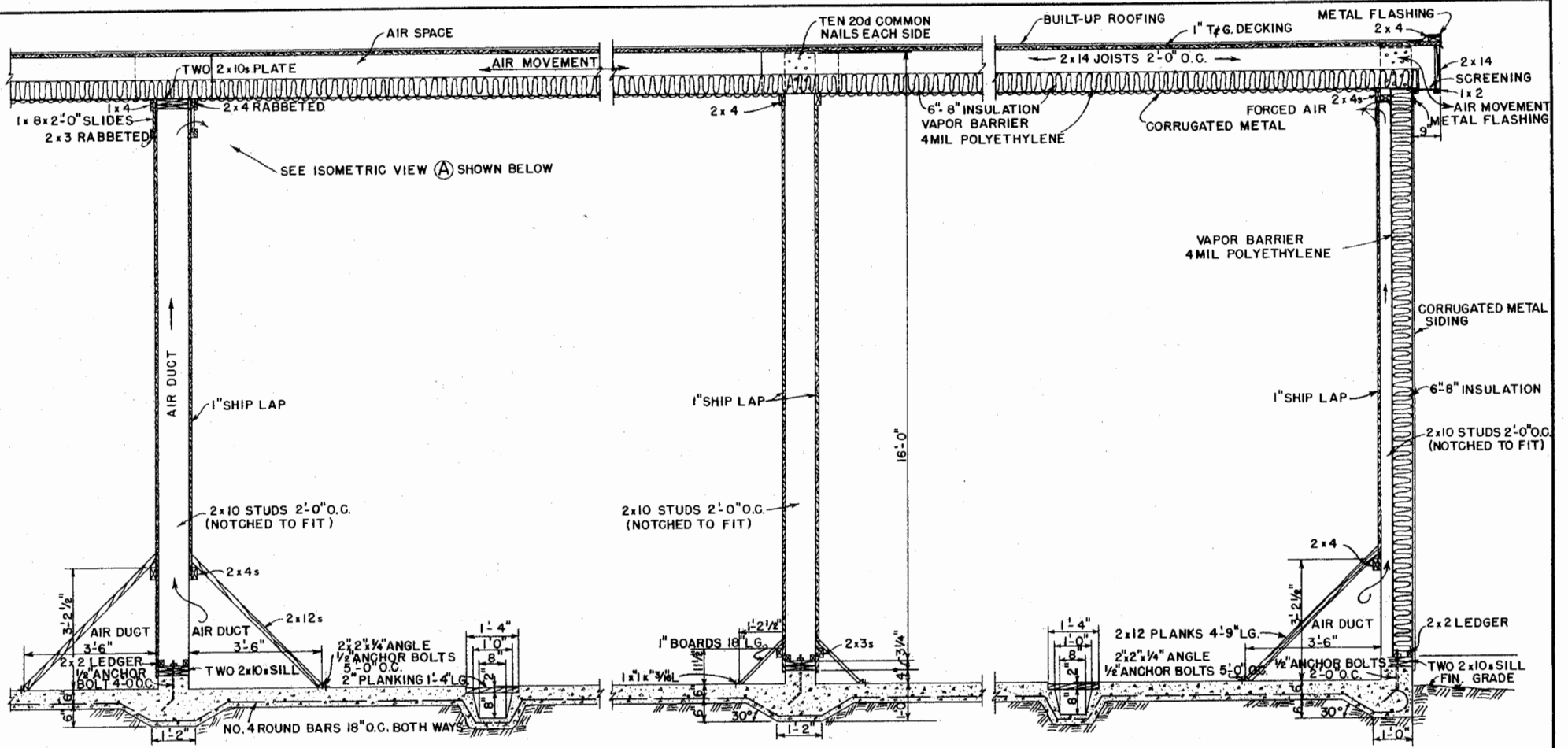
SECTION B-B



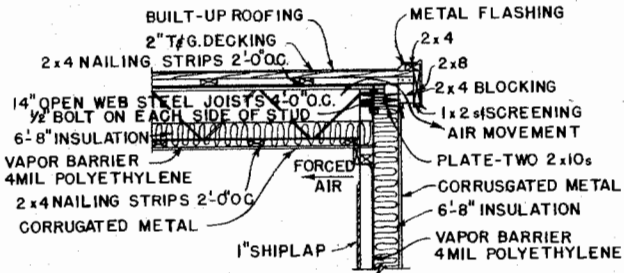
SECTION C-C

NOTE: SCALE 3/8" = 1'-0" UNLESS OTHERWISE NOTED

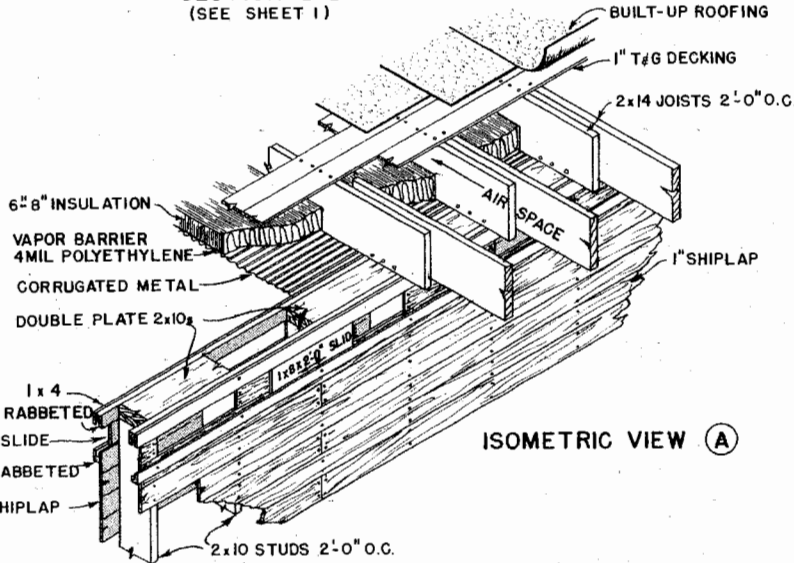
60,000 CWT. POTATO WAREHOUSE		
N.D.#USDA '61	EX. 5927	SHEET 1 OF 5



SECTION D-D
(SEE SHEET 1)



ALTERNATE ROOF AND WALL CONSTRUCTION



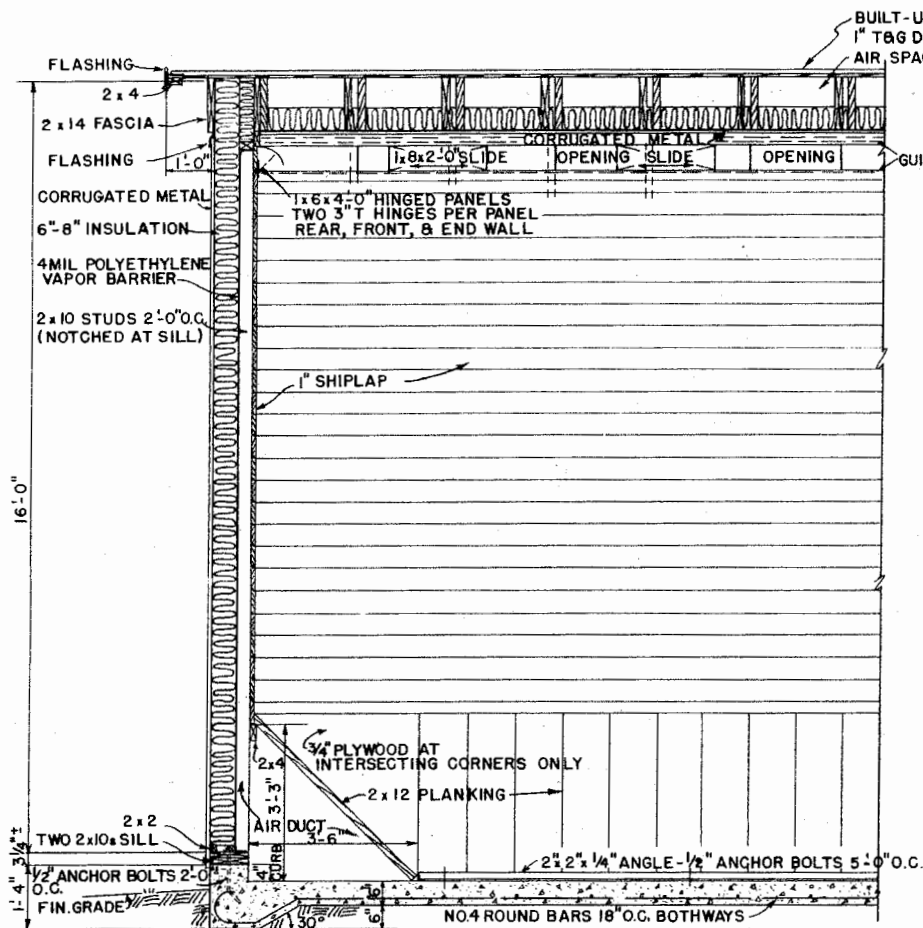
ISOMETRIC VIEW (A)

NOTE: SCALE 1/2" = 1'-0" UNLESS OTHERWISE NOTED

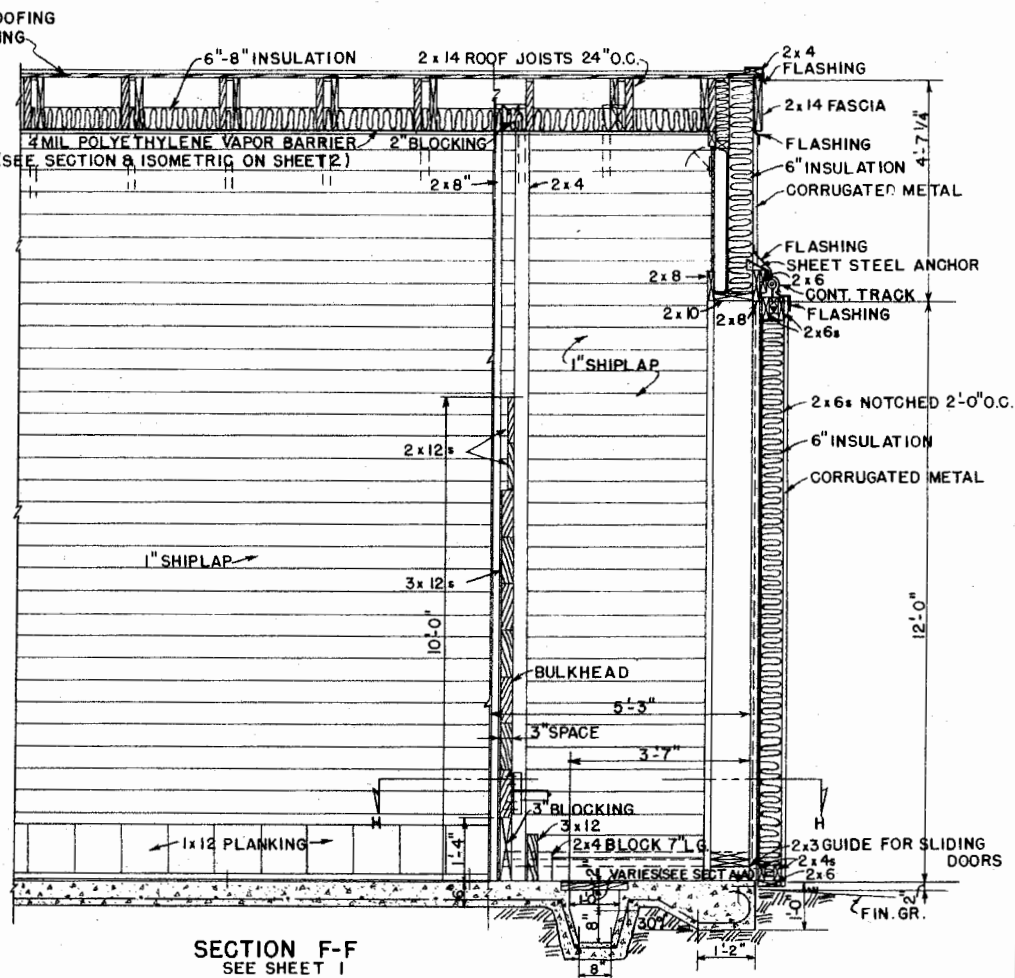


60,000 CWT. POTATO WAREHOUSE

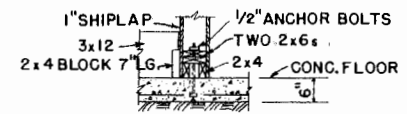
N.D.#USDA 61 EX. 5927 SHEET 2 OF 5



SECTION E-E
SEE SHEET 1

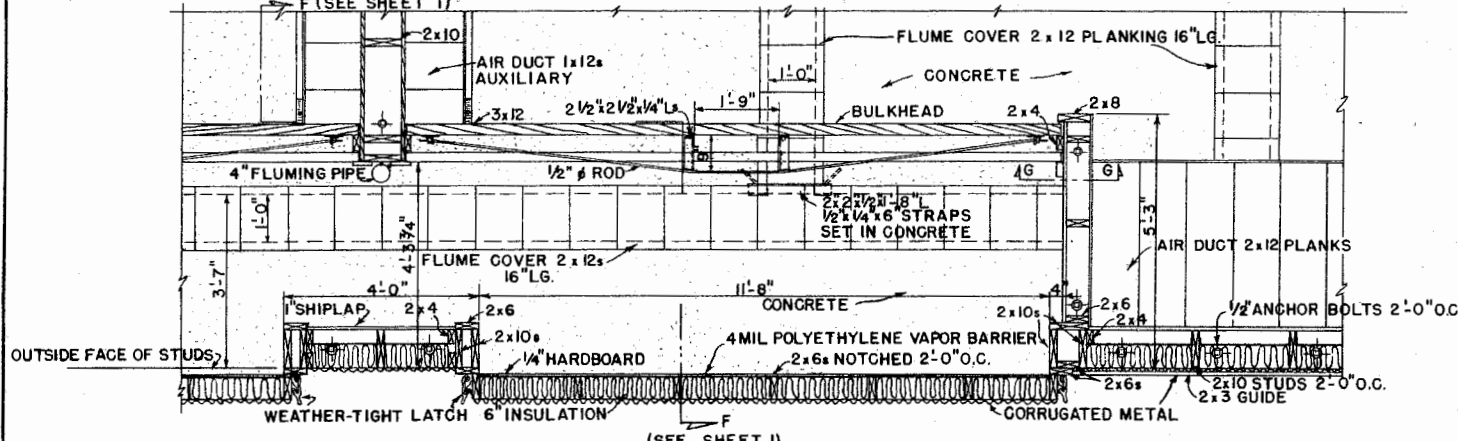


SECTION F-F
SEE SHEET 1



SECTION G-G

NOTE: SCALE 1/2"=1'-0" UNLESS OTHERWISE NOTED



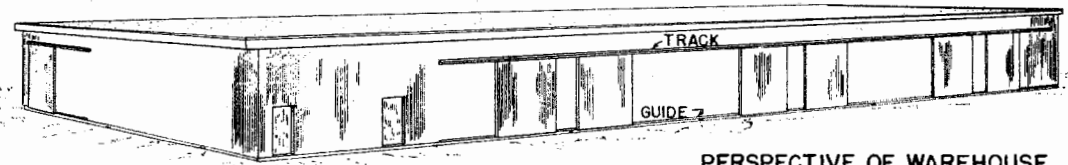
SECTION H-H
(SEE SHEET 1)

NOTE: CONCRETE CURBING TO BE ONE ESTABLISHED LEVEL THRU-OUT.

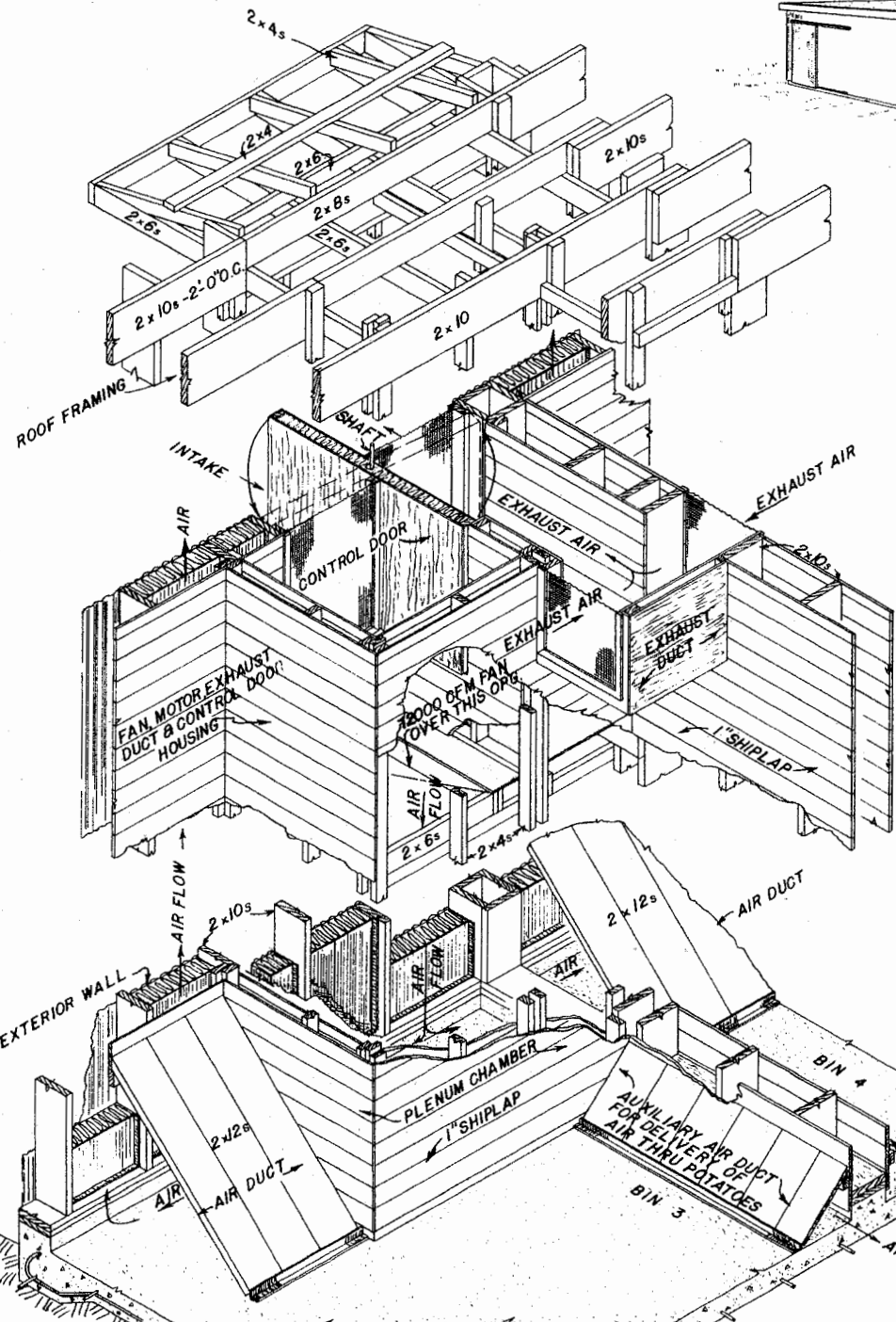


60,000 CWT. POTATO WAREHOUSE

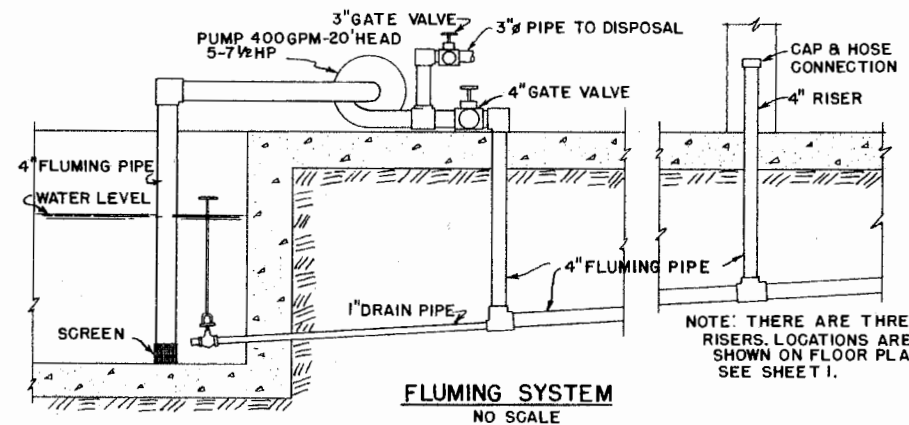
ND, USDA '61 EX. 5927 SHEET 3 OF 5



PERSPECTIVE OF WAREHOUSE

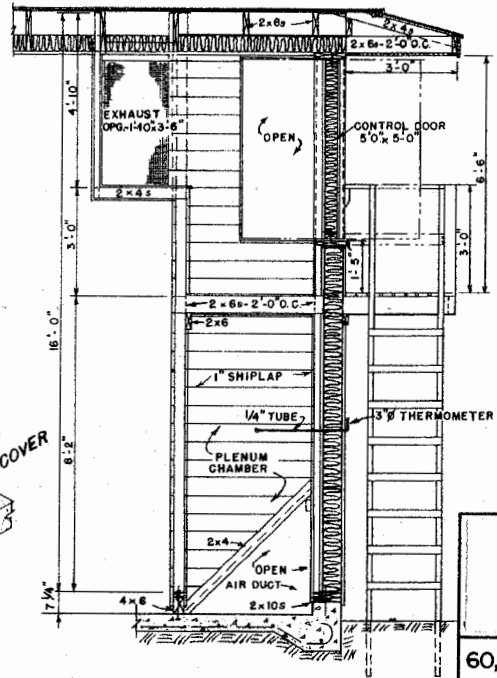


ISOMETRIC VIEW OF VENTILATION SYSTEM



FLUMING SYSTEM
NO SCALE

NOTE: THERE ARE THREE RISERS. LOCATIONS ARE SHOWN ON FLOOR PLAN SEE SHEET 1.

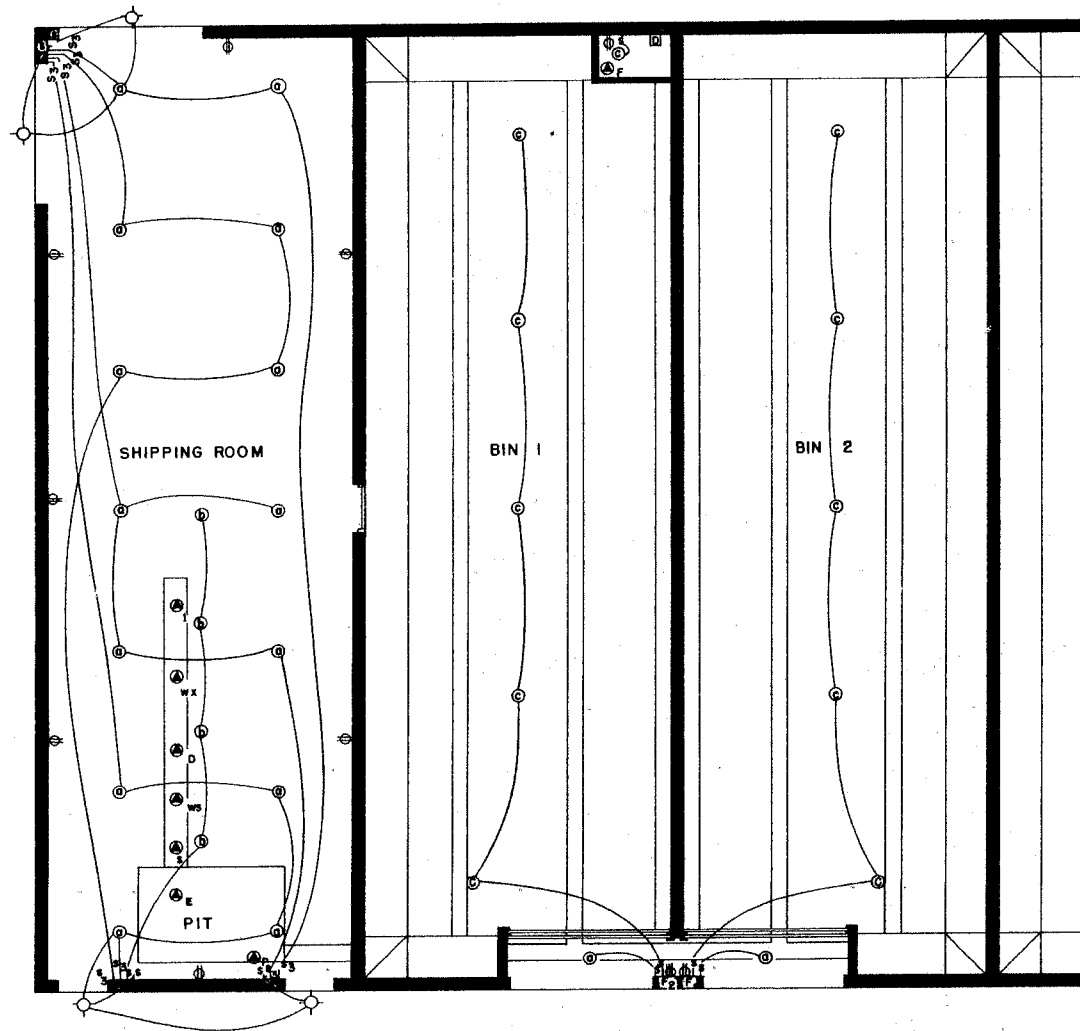


SECTION J-J (SEE SHEET 1)
SCALE: 3/8"=1'-0"



60,000 CWT. POTATO WAREHOUSE

ND. 4 USDA '61 EX. 5927 SHEET 4 OF 5



ELECTRICAL LAYOUT
SCALE: 1/8"=1'-0"

NOTES: DISTRIBUTION CENTER LOCATION WILL DEPEND ON SITE.
NO SUPPLY CIRCUITS SHOWN.
LAYOUT SHOWN (BINS 1 AND 2) TO BE REPEATED IN BINS 3, 4, 5, AND 6.
EQUIP BUILDING WITH AN ADEQUATE LIGHTNING PROTECTION SYSTEM IN AREAS WHERE NEEDED.

SERVICE ENTRANCE FACILITIES

REQUIREMENTS WILL DEPEND UPON EQUIPMENT SELECTED AND POWER DISTRIBUTION FACILITIES IN THE VICINITY. THREE-PHASE SERVICE IS HIGHLY DESIRABLE, WHERE AVAILABLE. CONSULTATION WITH COMPETENT ELECTRICAL WIRING ADVISOR WILL BE ESSENTIAL IN DESIGNING FINAL SYSTEM.

MINIMUM 3 ϕ 208V. OR 1 ϕ 230V. CIRCUIT REQUIREMENTS:

1. PUMP FOR FLUME
2. SUB-MAIN FOR VENTILATING FANS
3. PORTABLE CONVEYORS FOR FILLING BINS
4. }
5. } DISTRIBUTIONS FOR PROCESSING MACHINERY
6. }

MINIMUM 1 ϕ 115V. CIRCUIT REQUIREMENTS:

- 6-20 AMP. CIRCUITS-SHIPPING ROOM
- 3-20 AMP. CIRCUITS-STORAGE BINS AND FAN ROOMS
- 1-SPARE
- 10-MINIMUM TOTAL

PROBABLE SERVICE ENTRANCE SIZE: 200AMP. 3 ϕ 208V. OR 400 AMP. 1 ϕ 230 V. TO PROVIDE FOR FUTURE EXPANSION.

LEGEND

- S SINGLE SWITCH
- S₃ THREE-WAY SWITCH
- ⊙ CEILING LIGHTING R-40-115° REFLECTOR LAMPS, 500 WATT.
- ⊙R SPECIAL LIGHTING FOR PROCESSING AND SORTING-PROBABLY R-40-35° SPOTS 300 WATT, ARRANGEMENT TO BE DETERMINED BY EQUIPMENT CHOSEN.
- ⊙V VAPOR-PROOF CEILING FIXTURES, 100 WATT.
- ⊕ BRACKET LAMP HOLDERS-OUTDOOR FLOOD.
- ⊕⊕ DUPLEX CONVENIENCE OUTLETS, GROUNDING TYPE, 110V.
- ⊕P PUMP FOR FLUME 5-7½ HP 3 ϕ 208V. OR 1 ϕ 230V., FUSED SWITCH.
- ⊕F VENTILATING FAN 3 HP 3 ϕ 208V. OR 1 ϕ 230V., FUSED SWITCH.
- ⊕F₂ TWO SINGLE CONVENIENCE OUTLETS FOR CONNECTING TWO 1HP PORTABLE CONVEYORS, GROUNDING-TYPE 1 ϕ 208V. OR 230V. OUTLETS WITH FUSES ON BOX COVER OR STANDARD 3 ϕ 208V. OUTLETS WITH SEPARATE LOCAL FUSE BOX.
- ⊕F SINGLE CONVENIENCE OUTLET, GROUNDING TYPE, 115V, WITH INDIVIDUAL FUSE ON BOX COVER.
- ⊕V DAMPER MOTOR FOR VENTILATION CONTROL.

PROCESSING AND PACKAGING MACHINERY-UNITS AND SIZES WILL DEPEND UPON SYSTEM CHOSEN. THE FOLLOWING ARE POSSIBILITIES, ALL 3 ϕ 208V. OR 1 ϕ 230V.

- ⊕E ELEVATOR FROM PIT
 - ⊕S SIZER
 - ⊕WS WASHER
 - ⊕D DRYER
 - ⊕WX WAXER
 - ⊕I INSPECTION TABLE
- COMBINED LOAD 7-15 HP.

LSU
AgCenter
Research & Extension

60,000 CWT POTATO WAREHOUSE

ND, USDA '61 EX. 5927 SHEET 5 OF 5

Disclaimer

This site makes available conceptual plans that can be helpful in developing building layouts and selecting equipment for various agricultural applications. These plans do not necessarily represent the most current technology or construction codes. They are not construction plans and do not replace the need for competent design assistance in developing safe, legal and well-functioning agricultural building system. The LSU Agriculture Center, the Mid-West Plan Service, the United States Department of Agriculture and none of the cooperating land-grant universities warranty these plans.