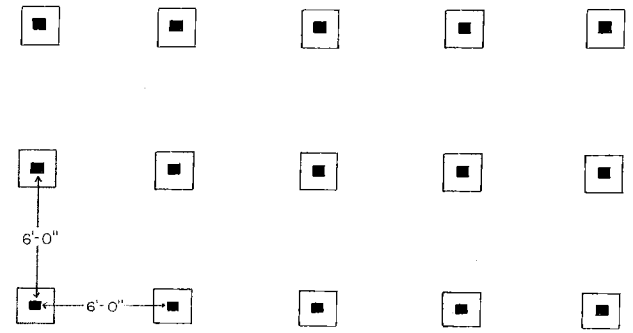


FRAMING PLAN

4x4 POSTS, 6'-0"
O.C. SET INTO
CONCRETE
FOOTINGS



FOUNDATION PLAN

NOTES

1. LOCATION - NEED TO ANALYZE SITE FOR:

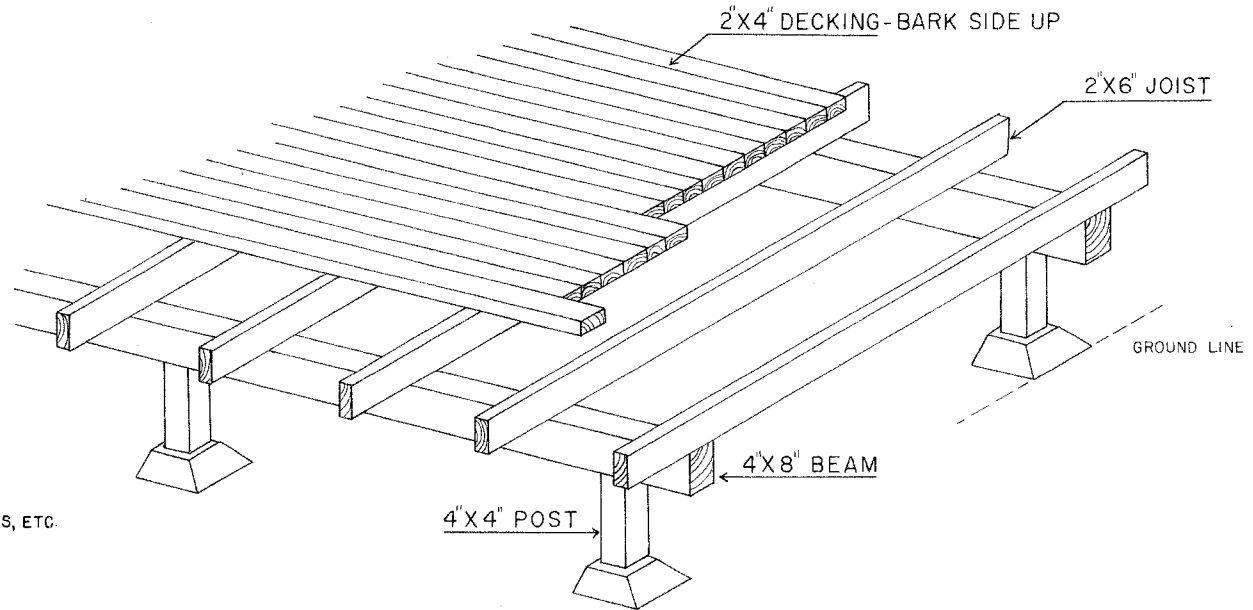
- A. ENERGY EFFICIENCY - BEST LOCATION IS S-W SIDE OF HOUSE, GIVES ACCESS TO SUMMER BREEZES AND AFTERNOON SUN, PROTECTION FROM WINTER WINDS
- B. AREA WITH LEAST AMOUNT OF NOISE
- C. AREA WITH BEST VIEWS AND THE MOST PRIVACY
- D. SHADE - IS DECK TO BE UNDER TREES, IN FULL SUN, PARTIALLY SHADED, IF AN ARBOR IS TO BE BUILT FOR SHADE
- E. DESIRED INDOOR/OUTDOOR RELATIONSHIP - ACCESS FROM HOUSE AND YARD
- F. DETERMINE PROPERTY LINE - FIND OUT LOCAL BUILDING CODES, SUBDIVISION RESTRICTIONS, ETC.
- G. KNOW SOIL CONDITIONS TO HELP DETERMINE DEPTH AND SIZE OF FOOTINGS

2. MAKE SURE POSTS ARE PLUMB

3. DECK SHOULD DRAIN AWAY FROM HOUSE

4. IF ARBOR IS BUILT, DECIDUOUS VINES CAN BE USED FOR ADDITIONAL SUMMER SHADE

5. THE AMERICAN WOOD PRESERVERS' ASSOCIATION ISSUES TREATMENT STANDARDS FOR VARIOUS PRESERVATIVES AND THE AMOUNTS TO BE USED ON LUMBER WHETHER ABOVE OR BELOW GROUND. CONSULT LABELS ON LUMBER FOR DETAILS.

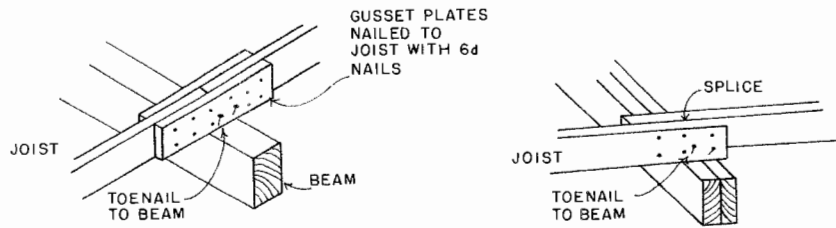


ISOMETRIC

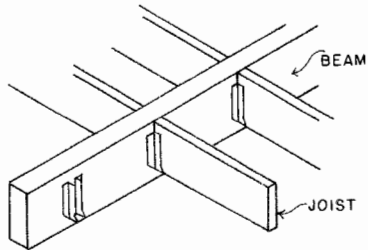


DECK CONSTRUCTION

ENGINEER	J.W.B.	SCALE	NONE
DRAWN BY	E.G.L.	SHEET	1 OF 4
TRACED BY	E.L.N.	DATE	3-19-85 NO. 26-2



SPLICING JOISTS & BEAMS (AVOID IF POSSIBLE)



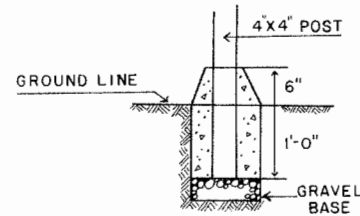
JOIST HANGERS

* JOIST-BEAM CONNECTION - 3 TYPES

STRENGTH GROUPINGS OF SOFTWOODS	
GROUP 1	DOUGLAS FIR (COAST TYPE) LARCH, WESTERN PINES, SOUTHERN
GROUP 2	BALD CYPRESS (RED, YELLOW & WHITE) FIR, WESTERN (WHITE, YELLOW, BALSAM, NOBLE) DOUGLAS FIR (SOUTHERN TYPE) HEMLOCK, EASTERN & WESTERN
GROUP 3	CEDAR PINE (IDAHO WHITE, LODGE POLE, NORTHERN WHITE, PONDEROSA, & SUGAR) REDWOOD SPRUCE (ENGLEMANN & SITKA)

JOIST SPANS AND SPACINGS (16 INCH SPACING)			
2 x 6	GROUP 1	9 FEET	9 INCHES
	GROUP 2	8 FEET	7 INCHES
	GROUP 3	7 FEET	9 INCHES
2 x 8	GROUP 1	12 FEET	10 INCHES
	GROUP 2	11 FEET	4 INCHES
2 x 10	GROUP 3	10 FEET	2 INCHES
	GROUP 1	16 FEET	5 INCHES
	GROUP 2	14 FEET	6 INCHES
	GROUP 3	13 FEET	

*COURTESY OF NATIONAL FOREST PRODUCTS ASSOCIATION



FOOTING SECTION

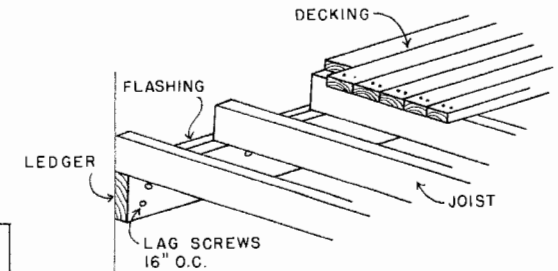
SCALE: 3/4" = 1'-0"

GALV. OR ALUM.
L-BRACE

GALV. OR ALUM.
T-BRACE

BEAM TOE-
NAILED TO
POST WITH 20d
GALV. NAILS

BEAM-POST CONNECTIONS



DECKS CAN BE CONNECTED TO THE EXTERIOR OF THE HOUSE WITH A LEDGER STRIP. CAN BE 2x4, 6, 8 OR 10 DEPENDING ON DECK SIZE. USE BOLTS OR LAG SCREWS TO CONNECT LEDGER TO INTERIOR FLOOR FRAMING. JOIST CAN BE CONNECTED W/JOIST HANGERS. PLACE FLASHING BETWEEN HOUSE WALL AND TOP OF LEDGER TO PROTECT HOUSE FROM MOISTURE.

LEDGER-HOUSE CONNECTION

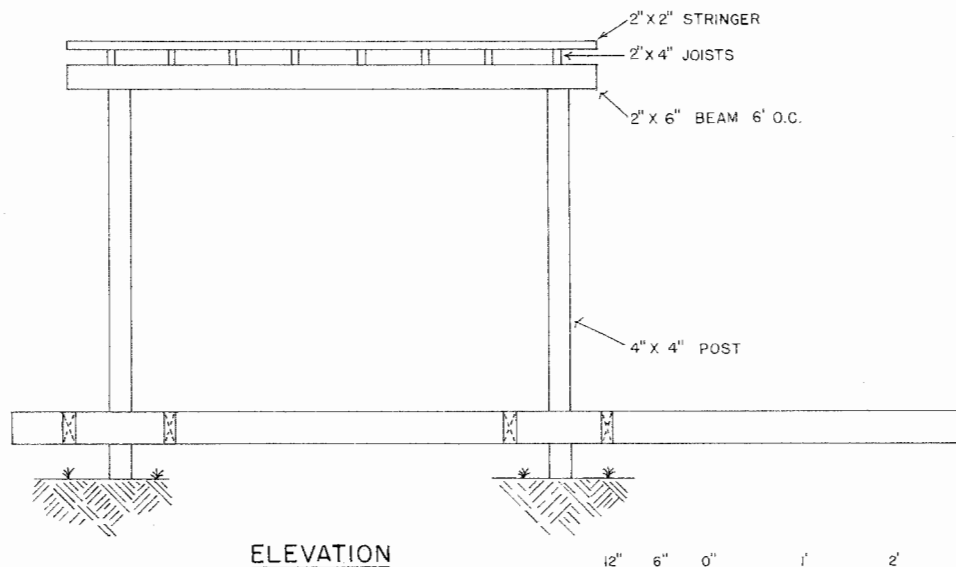
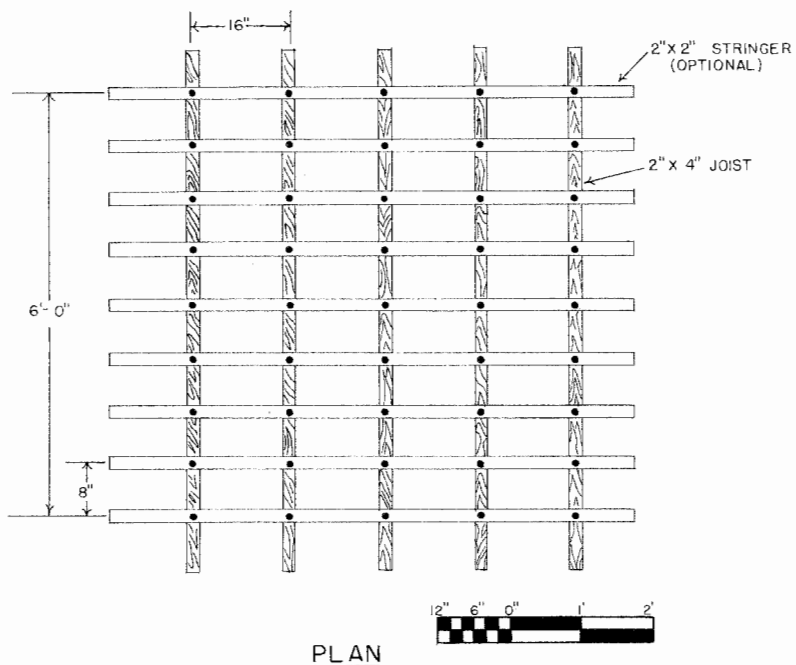
BEAM SIZE	WOOD'S STRENGTH GROUP	MAXIMUM DISTANCE BETWEEN BEAMS	MINIMUM POST SIZE	MAXIMUM DECK HEIGHT
FOR SIX-FOOT SPAN BETWEEN POSTS				
4x6	1,2,3	6 FEET	4x4	12 FEET
4x8	1	12 FEET	4x4	12 FEET
	2	10 FEET	4x4 AT	10 FEET OR
	3	8 FEET	4x6 AT	12 FEET
4x10	1	RECOMMENDED FOR BEAM SPANS GREATER THAN 6 FEET		
	2	13 FEET	4x4 AT	8 FEET OR
	3	10 FEET	4x6 AT	10 FEET OR
			4x4 AT	10 FEET OR
			4x6 AT	12 FEET

DECKING SIZE - ALL 2 INCH LUMBER WIDTH LAID FLAT		SPECIES	MAXIMUM SPAN
TYPE - STANDARD AND TONGUE AND GROOVE		GROUP 1	60 INCHES
		GROUP 2	48 INCHES
		GROUP 3	42 INCHES

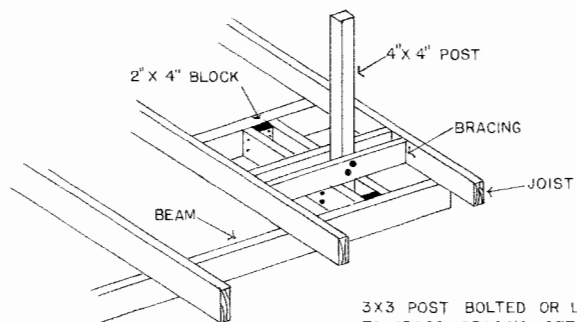


DECK CONSTRUCTION

ENGINEER	DETAILS	SCALE	NONE
DRAWN BY	E.G.L.	SHEET	2 OF 4
TRACED BY	E.L.N.	DATE	3-18-85 NO 26-2



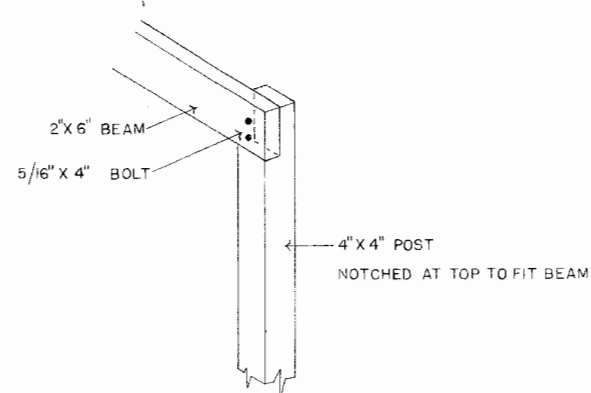
NOTE IF A SOLID COVERING IS DESIGNED PLACE 2" x 4" JOISTS AT 2' O.C. AND NAIL 4-OZ OR 5-OZ CORRUGATED FIBERGLASS OR 26-28 GAUGE GALVANIZED STEEL OR ALUMINUM ROOFING TO 2 x 4.



3X3 POST BOLTED OR LAGGED TO CROSS BRACING BETWEEN ADJACENT JOISTS AND BEAMS

ARBOR POST - DECK CONNECTION

ALTERNATE DETAIL WHERE POST IS NOT CONTINUOUS WITH DECK SUPPORT POST WHICH IS IN CONCRETE.

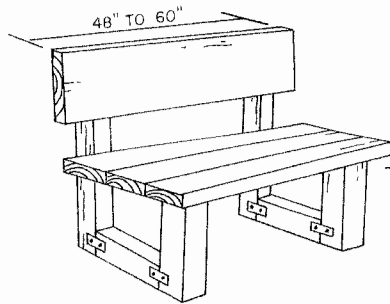


POST-BEAM CONNECTION

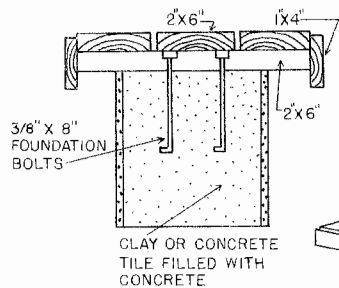
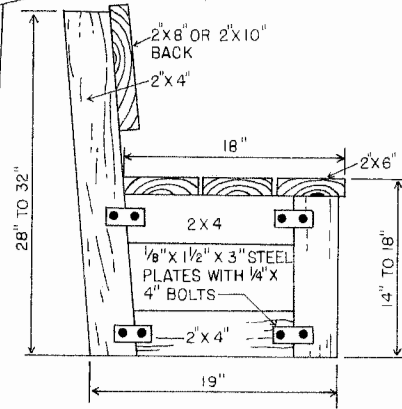


DECK CONSTRUCTION ARBOR

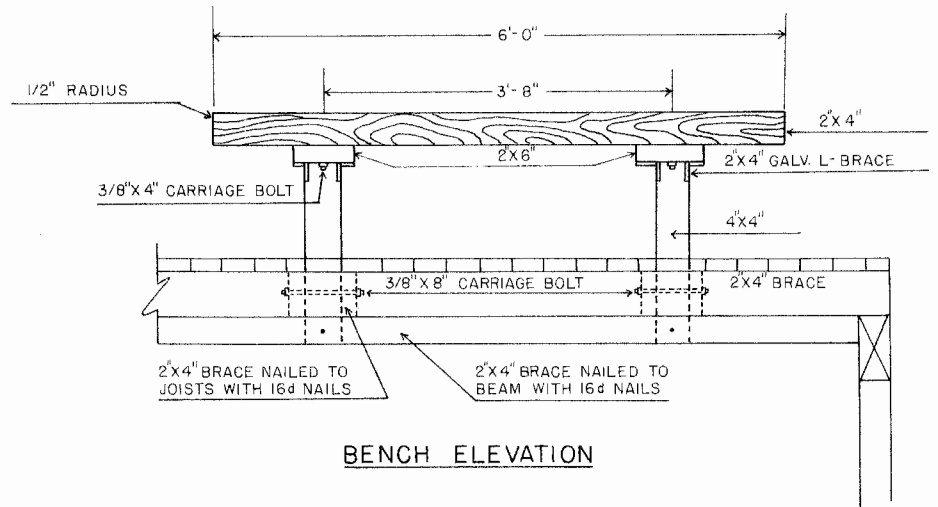
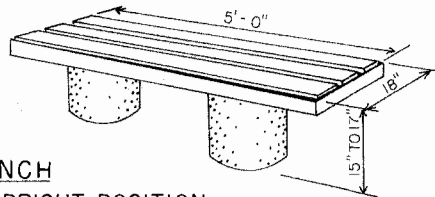
ENGINEER	J.W.B.	SCALE	AS SHOWN
DRAWN BY	E.G.L.	SHEET	3 OF 4
TRACED BY	R.M.P.	DATE	3-18-85 NO. 26-2



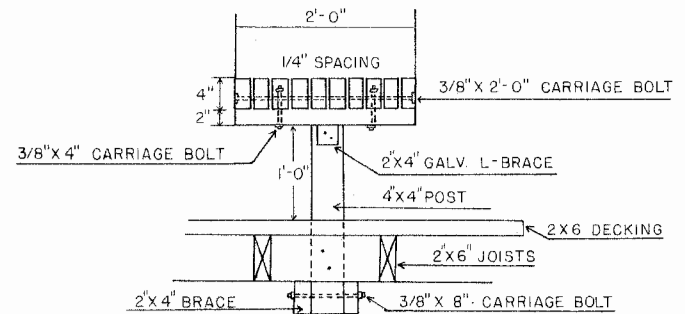
BENCH VARIATION



BENCH WITH TILE IN UPRIGHT POSITION



BENCH ELEVATION



BENCH CAN ALSO BE CONNECTED TO DECKING BY BRACES AND BOLTS OR AS IN ARBOR-DECK DETAIL ON PAGE 3. CAN ALSO BE USED AS A PATIO BENCH.

1. HEIGHT - 15-18", WIDTH - 1'-0" MINIMUM
2. WOOD SHOULD BE REDWOOD, PINE, CEDAR, FIR OR CYPRESS
SURFACE OF BENCH SHOULD BE HIGH QUALITY
3. LEGS (SUPPORT) - SPACE 3-5 FEET APART (CLOSER IF LIGHT LEGS SUCH AS 2X4S ARE USED)
4. COUNTERSINK NAILS AND SCREWS
5. ALL BENCH SEAT EDGES SHOULD HAVE 1/2" RADIUS

BENCH SECTION



DECK CONSTRUCTION

ENGINEER	DETAILS	SCALE	NONE
DRAWN BY	E. G. L.	SHEET	4 OF 4
TRACED BY	E. L. N.	DATE	3-20-85 NO 26-2

Disclaimer

This site makes available conceptual plans that can be helpful in developing building layouts and selecting equipment for various agricultural applications. These plans do not necessarily represent the most current technology or construction codes. They are not construction plans and do not replace the need for competent design assistance in developing safe, legal and well-functioning agricultural building system. The LSU Agriculture Center, the Mid-West Plan Service, the United States Department of Agriculture and none of the cooperating land-grant universities warranty these plans.