

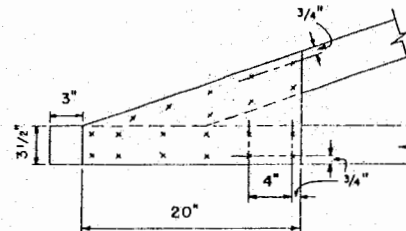
**NOTES:**  
 APPROXIMATELY 450' OF 4' WIDE 12 GAGE WIRE MESH IS REQUIRED PER BIN. USE 2 LAYERS OF 12 GAGE WIRE MESH FOR UPPER AND MIDDLE SECTIONS OF CRIB AND 3 LAYERS FOR LOWER SECTION OR, 1 LAYER OF 4 GAGE WIRE MESH FOR UPPER AND MIDDLE SECTIONS OF CRIB AND 1 LAYER OF 2 GAGE WIRE MESH FOR LOWER SECTION

SCALE: 3/8"=1'-0" UNLESS OTHERWISE INDICATED

<b>LSU</b> <b>AgCenter</b> <small>RESEARCH &amp; EXTENSION</small>		
<b>EAR CORN STORAGE CRIB</b> CAPACITY - 1500 BU.		
W. VA. '74	6182	SHEET 1 OF 3

### TRUSS SPECIFICATION

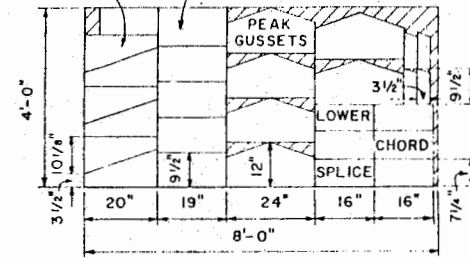
LUMBER:  
 UPPER CHORD 2x4 - 1500f LUMBER  
 LOWER CHORD 2x4 - 1200f LUMBER  
 WEB 2x4 CONSTRUCTION GRADE DOUGLAS FIR,  
 LARCH, HEMLOCK OR NO. 2 SOUTHERN PINE.  
 GLUE:  
 RESORCINOL RESIN TYPE  
 NAILS:  
 6d SPACED 4" O.C. TWO ROWS FOR 2x4 MEMBERS.



TYPICAL NAIL PATTERN

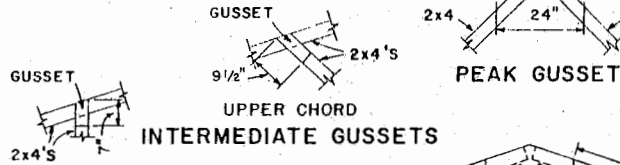
SCALE: 1/2" = 1'-0"  
 12" 9" 6" 3" 0"

HEEL GUSSET LOWER CHORD INTERMEDIATE GUSSETS

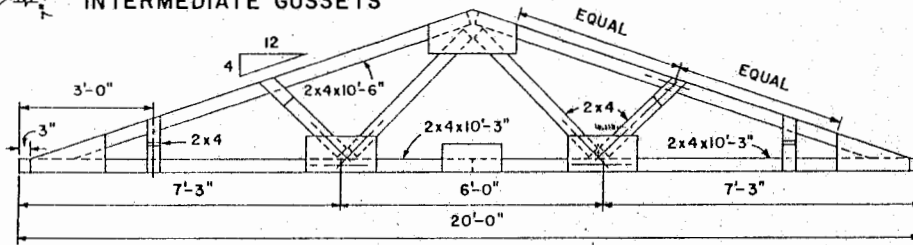


TYPICAL CUTTING SCHEDULE FOR PLYWOOD GUSSETS

SCALE: 1/2" = 1'-0"



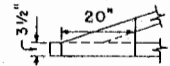
INTERMEDIATE GUSSETS



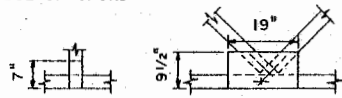
TRUSS

SCALE: 1/2" = 1'-0"  
 12" 6" 0" 1" 2"

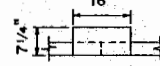
HEEL GUSSETS SHOULD BE FABRICATED FLUSH WITH BOTTOM EDGE OF CHORD MEMBER.



HEEL GUSSET

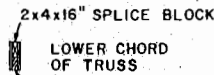


INTERMEDIATE GUSSETS LOWER CHORD

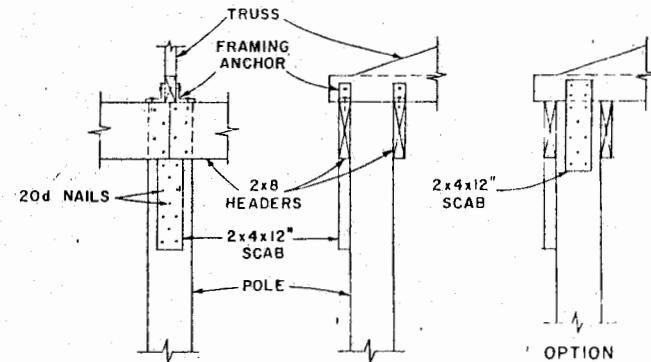


SPLICE SECTION

LOCATE GUSSETS AS SHOWN.



LOWER CHORD OF TRUSS

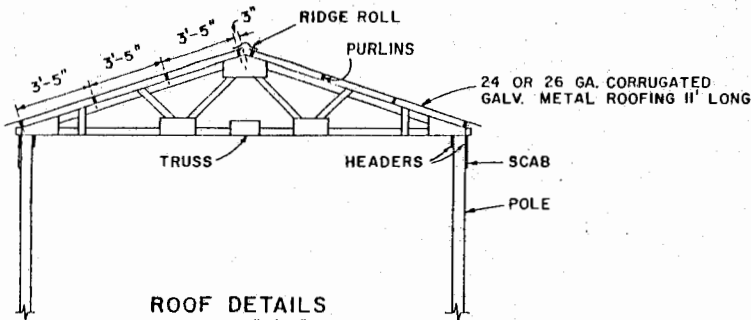


HEADER & TRUSS FASTENING DETAILS

SCALE: 1" = 1'-0"  
 12" 9" 6" 3" 0"

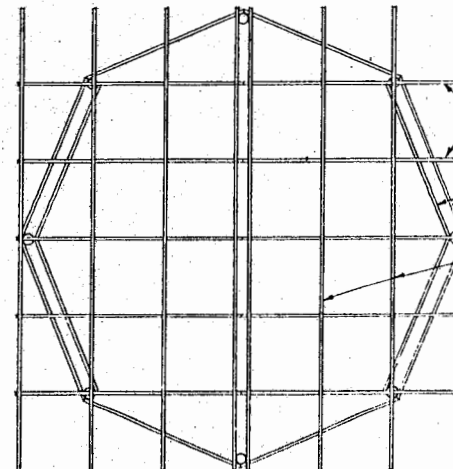
NOTE:

GUSSETS ARE CUT FROM PLYWOOD (EXT.-DFPA) 1/2" C-C STRUCTURAL I. FACE GRAIN IS HORIZONTAL ON ALL GUSSETS. THE PLYWOOD GUSSETS ARE ON BOTH SIDES OF THE TRUSSES.



ROOF DETAILS

SCALE: 1/4" = 1'-0"  
 12" 6" 0" 1" 2" 3" 4" 5"



TRUSS & PURLIN PLAN

SCALE: 1/4" = 1'-0"

TRUSSES-3 CENTERED ON TOP OF POLES, 2 CENTERED BETWEEN POLES.

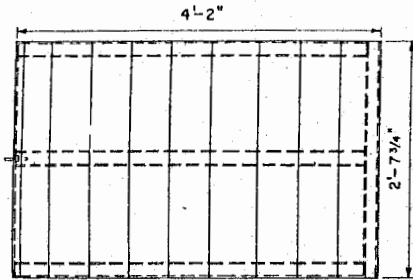
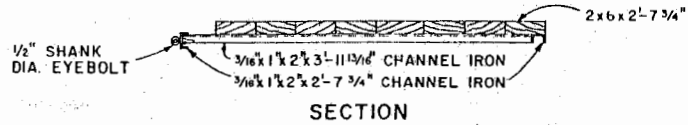
2x8 HEADERS

2x4x20'-6" PURLINS, SEE ROOF DETAILS FOR SPACING.



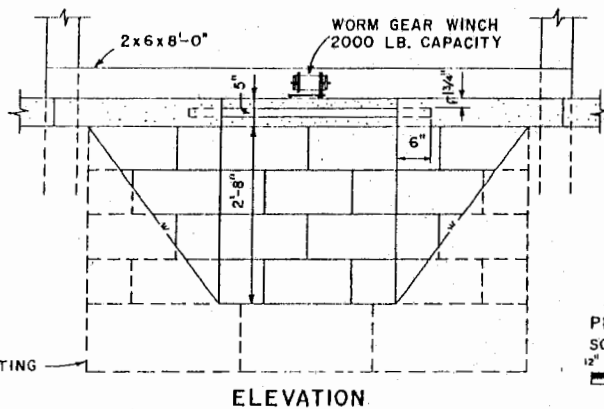
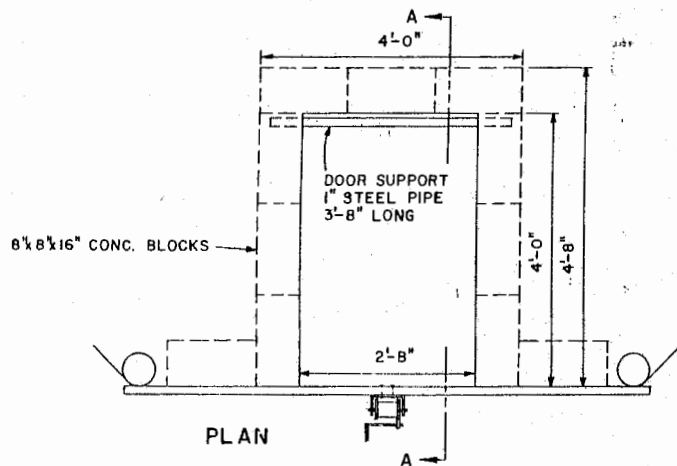
EAR CORN STORAGE CRIB  
 CAPACITY-1500 BU.

W. VA. '74 6182 SHEET 2 OF 3



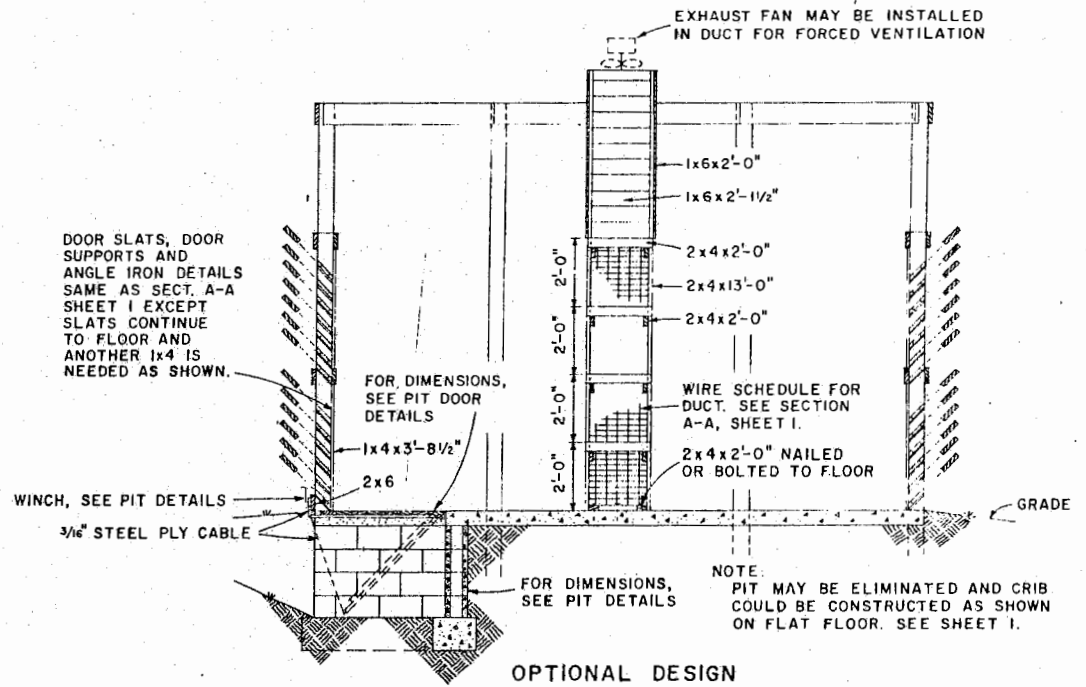
PIT DOOR DETAILS

SCALE: 1"=1'-0"



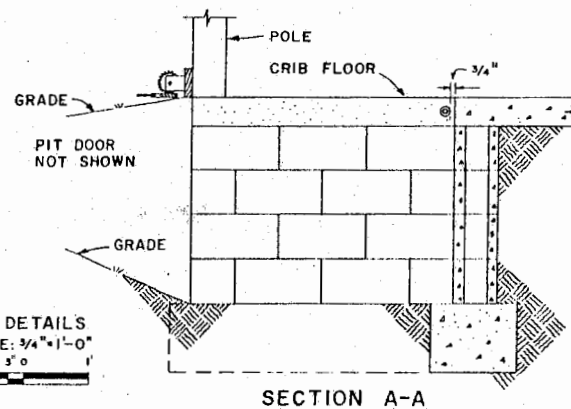
PIT DETAILS

SCALE: 3/4"=1'-0"



OPTIONAL DESIGN

SCALE: 3/8"=1'-0"



EAR CORN STORAGE CRIB  
CAPACITY-1500 BU

W. VA. '74 6182 SHEET 3 OF 3

## Disclaimer

This site makes available conceptual plans that can be helpful in developing building layouts and selecting equipment for various agricultural applications. These plans do not necessarily represent the most current technology or construction codes. They are not construction plans and do not replace the need for competent design assistance in developing safe, legal and well-functioning agricultural building system. The LSU Agriculture Center, the Mid-West Plan Service, the United States Department of Agriculture and none of the cooperating land-grant universities warranty these plans.