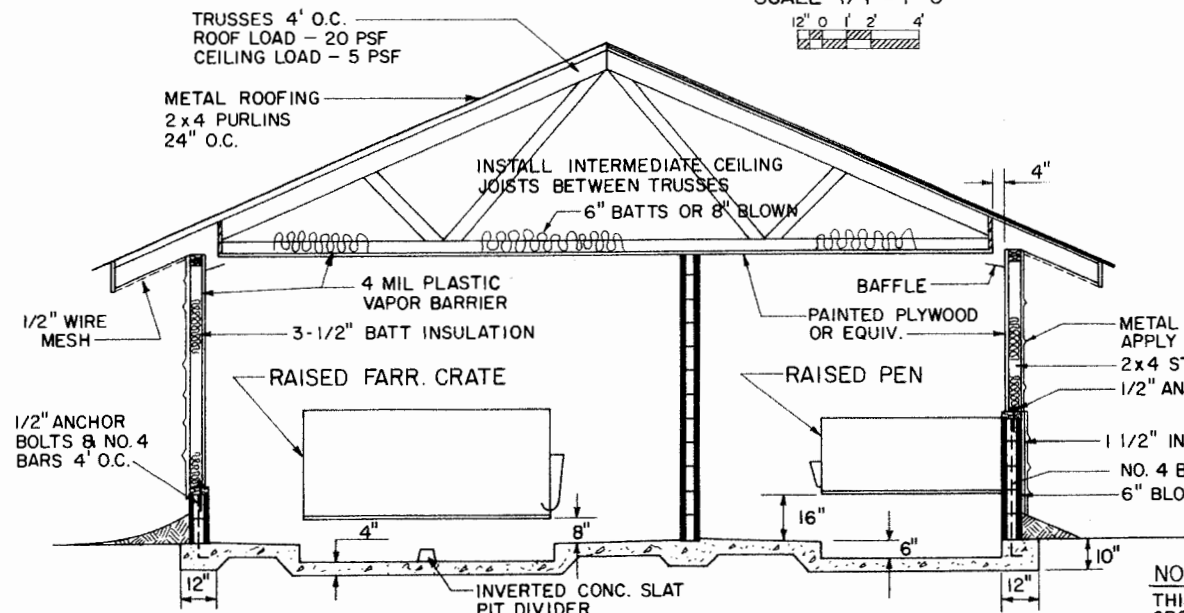
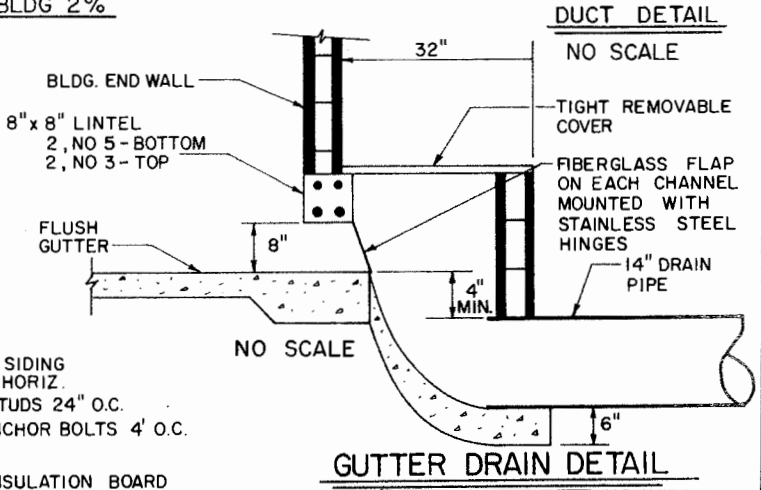


**FLOOR PLAN** - SLOPE BLDG 2%  
SCALE: 1/4" = 1'-0"



**TYPICAL SECTION**  
SCALE: 3/8" = 1'-0"



**DUCT DETAIL**  
NO SCALE

**GUTTER DRAIN DETAIL**  
NO SCALE

**NOTE:**  
THIS BUILDING IS DESIGNED FOR A FOUR GROUP PRODUCTION SCHEDULE. SOWS FARROW EVERY 37 DAYS AND PIGS ARE WEANED AT 30 DAYS OF AGE AND MOVED INTO NURSERY UNTIL 65 DAYS OF AGE.

**NOTE**  
THOROUGHLY CLEAN EACH ROOM BETWEEN GROUPS

14" DRAIN PIPE SLOPED 0.5% OR MORE

SEE GUTTER DRAIN DETAIL

AIR  
VAR. SPEED FAN  
1/2" x 2" FOLD DOWN DOOR IN SUMMER  
AIR

**DUCT DETAIL**

NO SCALE

TIGHT REMOVABLE COVER

FIBERGLASS FLAP ON EACH CHANNEL MOUNTED WITH STAINLESS STEEL HINGES

14" DRAIN PIPE

**GUTTER DRAIN DETAIL**

**LSU AgCenter**  
Research & Extension

10 CRATE FARROWING AND NURSERY WITH RAISED PENS

NC '85	6371	SHEET 1 OF 1
--------	------	--------------

## Disclaimer

This site makes available conceptual plans that can be helpful in developing building layouts and selecting equipment for various agricultural applications. These plans do not necessarily represent the most current technology or construction codes. They are not construction plans and do not replace the need for competent design assistance in developing safe, legal and well-functioning agricultural building system. The LSU Agriculture Center, the Mid-West Plan Service, the United States Department of Agriculture and none of the cooperating land-grant universities warranty these plans.