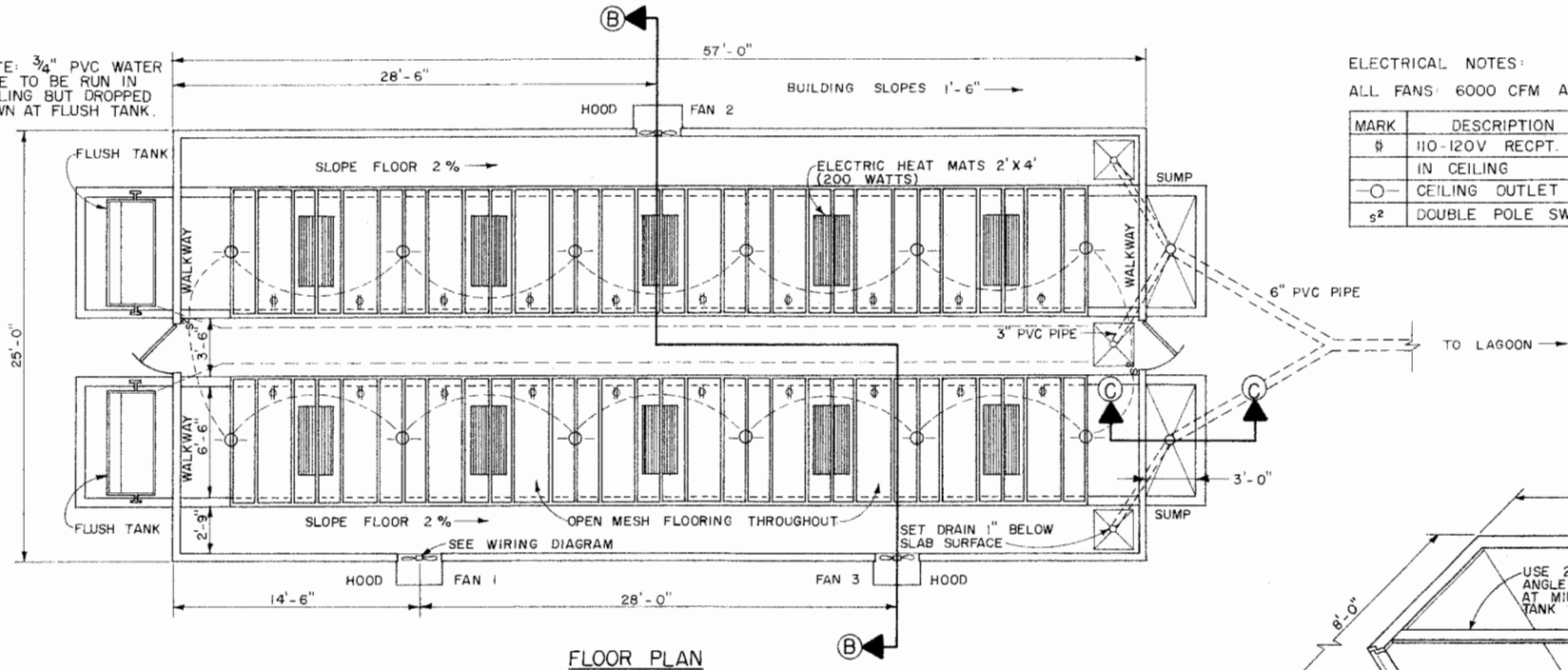


NOTE: 3/4" PVC WATER LINE TO BE RUN IN CEILING BUT DROPPED DOWN AT FLUSH TANK.

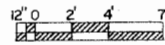
ELECTRICAL NOTES:

ALL FANS: 6000 CFM AT 1/8" S.P.

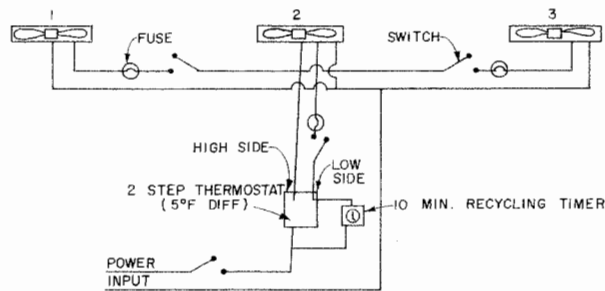
MARK	DESCRIPTION
⊕	110-120V RECT. MOUNTED IN CEILING
○	CEILING OUTLET
⊕ ²	DOUBLE POLE SWITCH



FLOOR PLAN



SCALE 3/16" = 1' - 0"



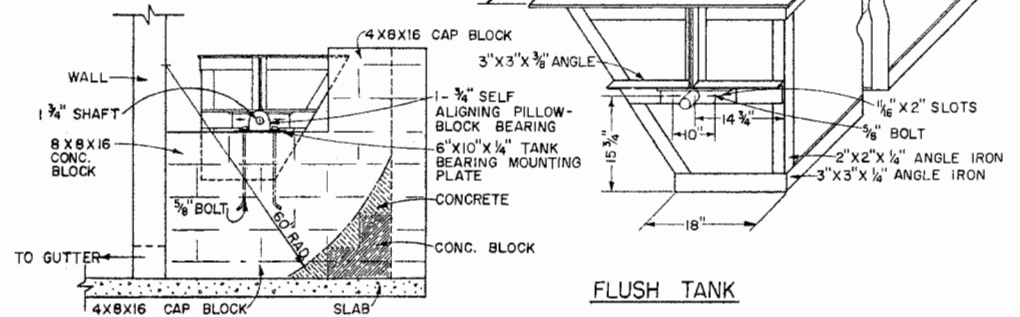
WIRING DIAGRAM

COLD WEATHER:

USE TIME CLOCK TO OPERATE FAN 2 APPROX. 20% OF TIME, (2 MIN. IN 10) FOR MOISTURE REMOVAL AND TO MAINTAIN 55-70% HUMIDITY IN BLDG. MAINTAIN TEMPERATURE AT 60-70°F.

HOT WEATHER:

FAN 2 CONTROLLED BY LOW SIDE OF 5° DIFFERENTIAL STEP THERMOSTAT, FANS 1 & 3 CONTROLLED BY HIGH SIDE.



FLUSH TANK

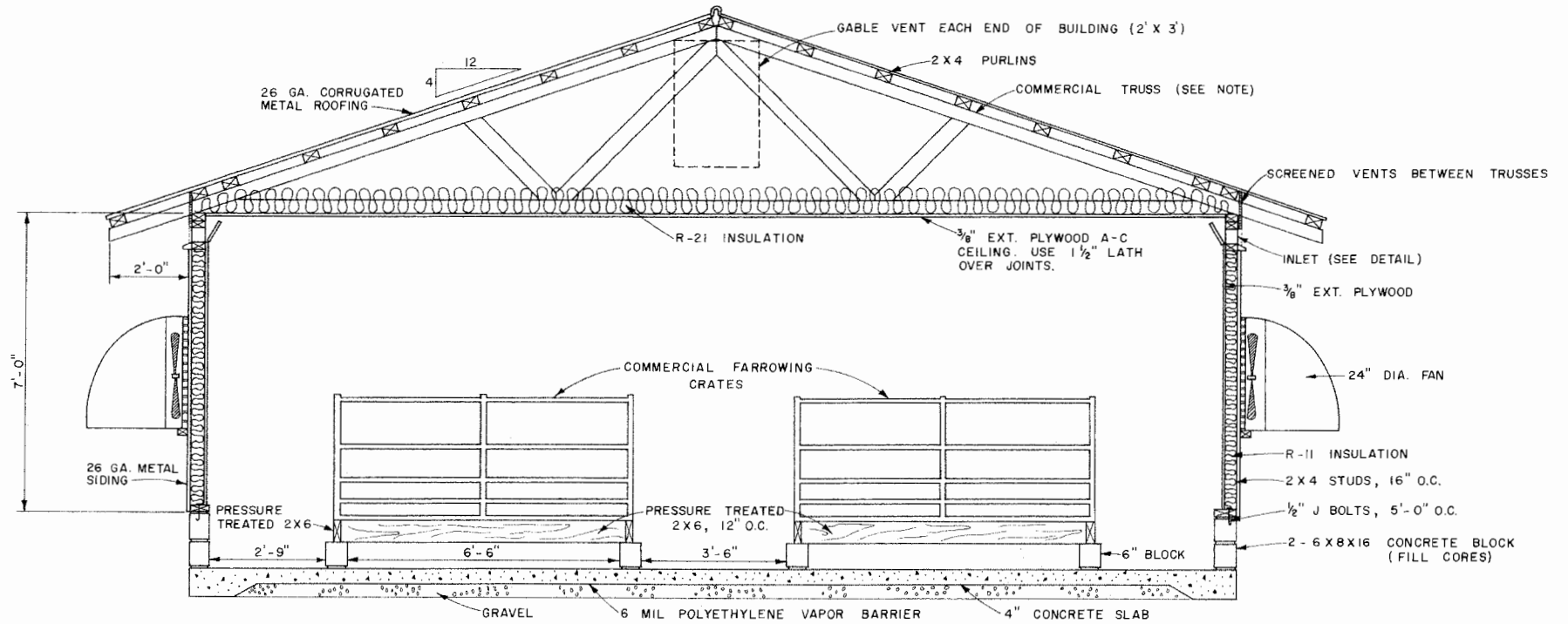
NOTES FOR FLUSH TANK:

- FORM CURVED SPLASH SURFACE WITH CONCRETE BLOCKS AND CONCRETE.
- FILL ALL CORES WITH CONCRETE. PLACE 5/8" BOLTS WHEN FILLING CORES.
- USE 12 GAUGE SHEET METAL. WELD CONTINUOUSLY TO AVOID LEAKAGE. TACK-WELD FRAME TO TANK WITH 2" WELDS SPACED 8" O.C.
- USE EPOXY PAINT WITH APPROPRIATE PRIMER.
- ADJUST SHAFT AS NEEDED TO BALANCE TANK. WEIGHTS MAY BE NEEDED FOR FINAL BALANCING.

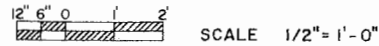
LSU
AgCenter
Research & Extension

FARROWING HOUSE - 20 STALLS

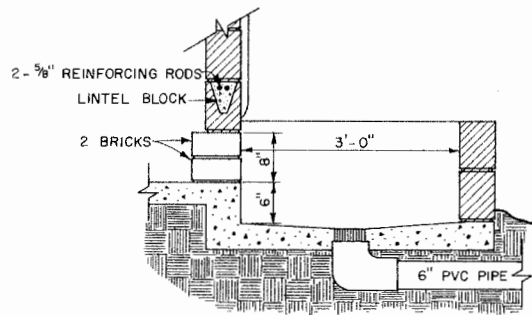
AL '83 EX. 6352 SHEET 1 OF 3



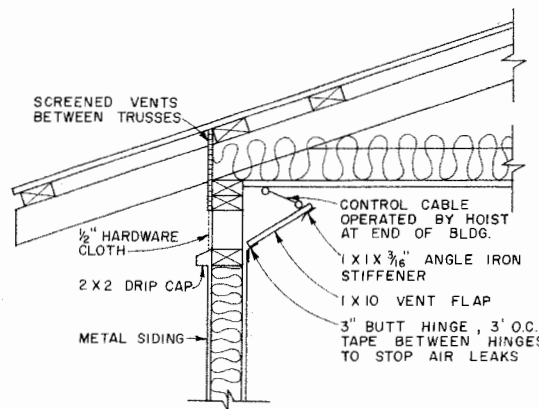
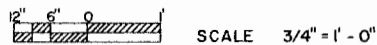
SECTION B-B



NOTE:
SELECT TRUSS TO SUPPORT
LOCAL SNOW AND WIND LOADS.



SECTION C-C

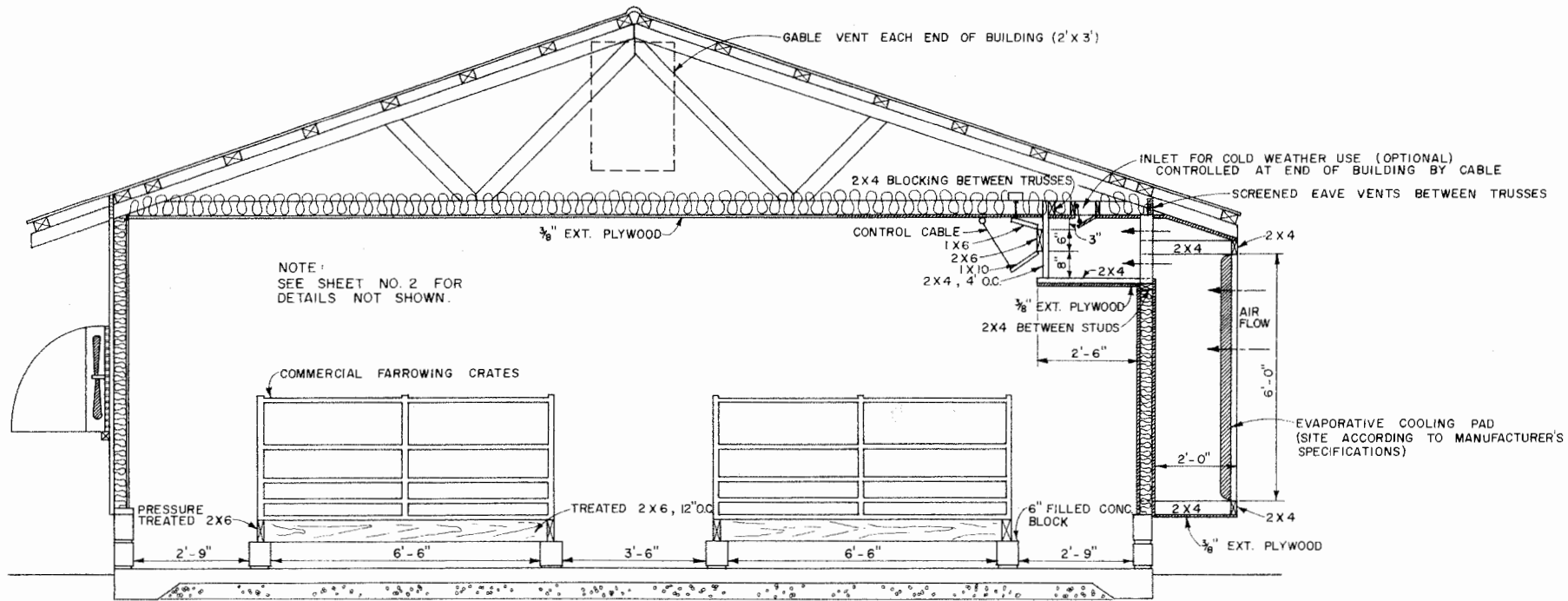


INLET DETAIL



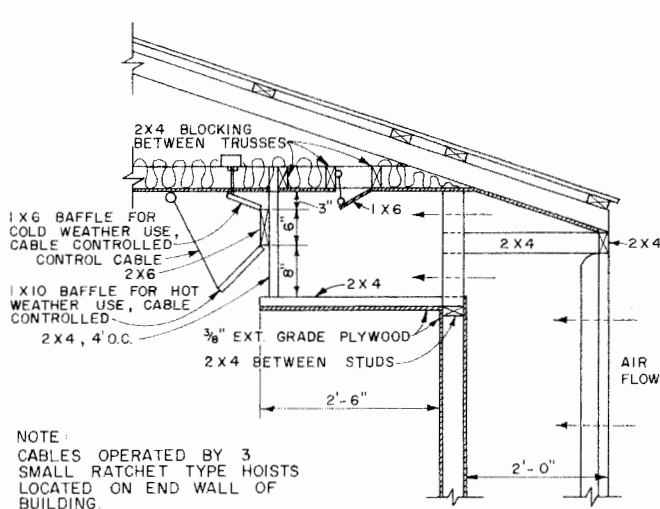
FARROWING HOUSE - 20 STALLS

AL '83 EX. 6352 SHEET 2 OF 3



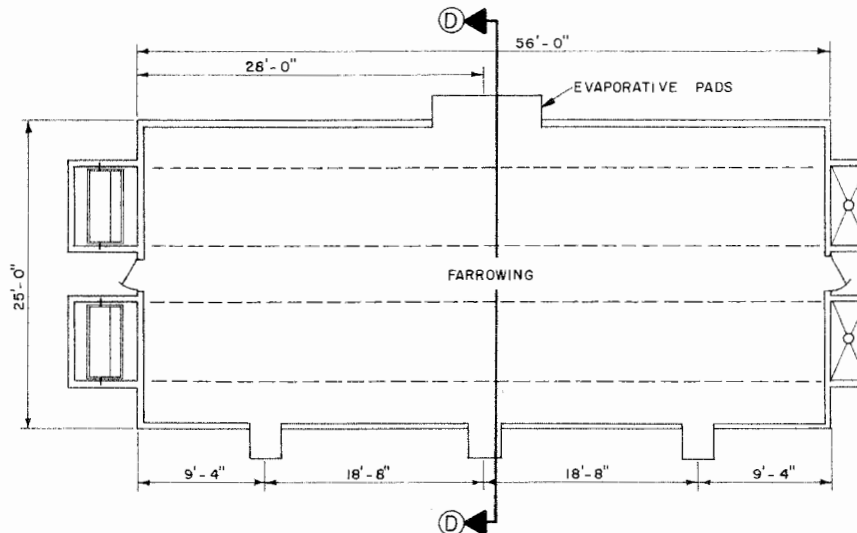
SECTION D - D

12' 6" 0' 1' 2' SCALE 1/2" = 1'-0"



INLET DETAIL

12' 6" 0' 1' SCALE 3/4" = 1'-0"



FLOOR PLAN & FAN ARRANGEMENT

NOT TO SCALE

ALTERNATIVE DESIGN FOR EVAPORATIVE COOLING



FARROWING HOUSE - 20 STALLS

AL '83 EX. 6352 SHEET 3 OF 3

Disclaimer

This site makes available conceptual plans that can be helpful in developing building layouts and selecting equipment for various agricultural applications. These plans do not necessarily represent the most current technology or construction codes. They are not construction plans and do not replace the need for competent design assistance in developing safe, legal and well-functioning agricultural building system. The LSU Agriculture Center, the Mid-West Plan Service, the United States Department of Agriculture and none of the cooperating land-grant universities warranty these plans.