



POULTRY PEST MANAGEMENT

One of the number one concerns of poultry growers is pest management. Rats and mice can cut into profits and result in an economic loss for farmers.

Rats and mice are naturally attracted by water, feed, and harborage. You may think that you do not have a rat or mouse problem because you only see a few. Did you know that in 6 months 250 rats and

mice could turn into 2000!

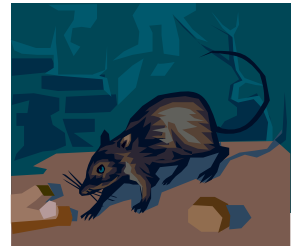
Poultry pest management is an ongoing process. You must continually change products every 3-4 months because rats and mice will develop a resistance if used long enough.

Poultry pest management does not need to be a sporadic effort. All growers need a long term plan in

place that consists of a rotation of different products.

For more information on rodent control please contact:

Ms. Johnnie Whitmire
 Assistant Extension Agent Poultry
 318-927-2578-office
 318-355-2646-cell



One mouse can eat up to 5 lbs of feed per year and rats can consume up to 20 lbs per year

How do they effect my cost?

Diseases

- Rats and mice can carry up to 45 different diseases.
- Effects bird health and farm biosecurity

Feed

- Will add to your feed conversion which will effect overall cost
- Contaminated feed can cause disease issues

Structural

- Rats and mice can destroy wiring in houses which could lead to fires or equipment failure
- Can cause premature replacement of curtains and insulation

Special points of interest:

- *Rats are cautious, they may not take baits immediately unless placed in directly in their path and they will pass up bait if fresh feed is available.*
- *Mice are very curious and will investigate bait stations.*
- *Rats are active at night, if they are seen in the daytime that is evidence of a large population.*
- *Rats and mice spend about 2% of their day gnawing. That's almost 4 hours per week per mouse/rat. Wood frames, curtain material, and wiring are some of their favorites.*
- *Bait stations for mice should be placed next to walls or on the horizontal surface of sills and braces. Corners, cool cell housings, and fan housings are also good locations.*



The Poultry Post Newsletter

Poultry Pest Management

OCTOBER 2007

Incorporate a rodent control program to increase profits by using these suggested USDA/FDA approved baits:

- **Jaguar**
- **Hawk**
- **Rampage**

Suggested rodent control program

by Motomco.

For more information call

Scott Miller

800-418-9242

www.motomco.com

- **Boot Hill**
- **Gunslinger**
- **Hombre**

Suggested Rodent Control program

by Liphatech

dwilliams@hogslat.com

601-849-4755

601-408-0986

www.Liphatech.com

For other approved baits contact Johnnie Whitmire at the info. below

Fourth Quarter

October 2007

Contact:
Johnnie Whitmire
Assistant Extension Agent - Poultry
11959 Hwy 9
Homer, LA 71040

Phone: 318-927-2578
Mobile: 318-355-2646
Fax: 318-927-4139
E-mail: jwhitmire@agcenter.lsu.edu

VISIT OUR WEB SITE
WWW.LSUAGCENTER.COM
/HFBROILERHOUSES

Louisiana State University Agricultural Center
William B. Richardson, Chancellor
Louisiana Agricultural Experiment Station
David Boethel, Vice Chancellor and Director
Louisiana Cooperative Extension Service
Paul D. Coreil, Vice Chancellor and Director

Issued in furtherance of Cooperative Extension work,
Acts of Congress of May 8 and June 30, 1914, in cooperation with the United
States Department of Agriculture.