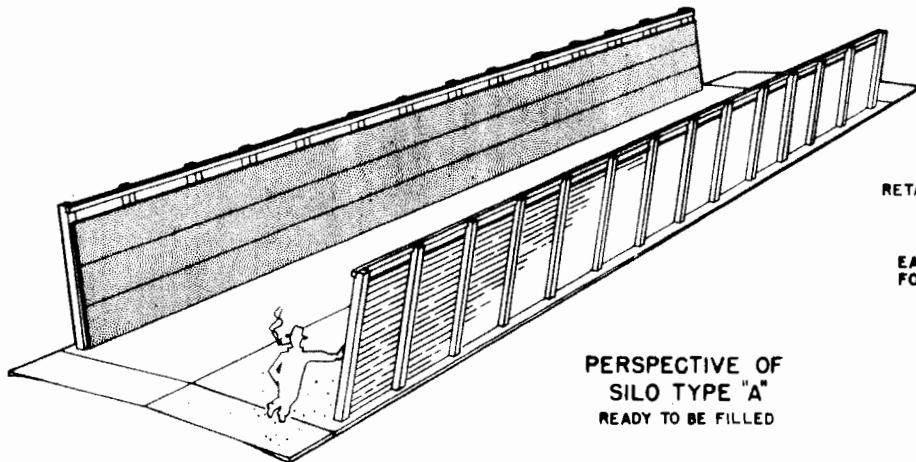
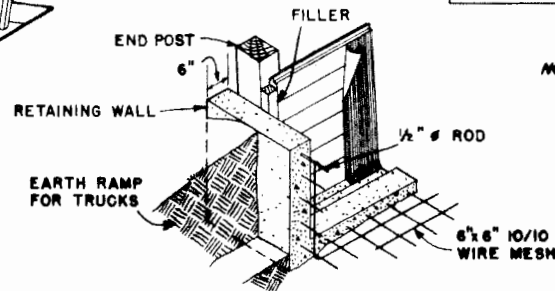


LONGITUDINAL SECTION
TYPE "A" SILO
SCALE: 1/8"=1'-0"

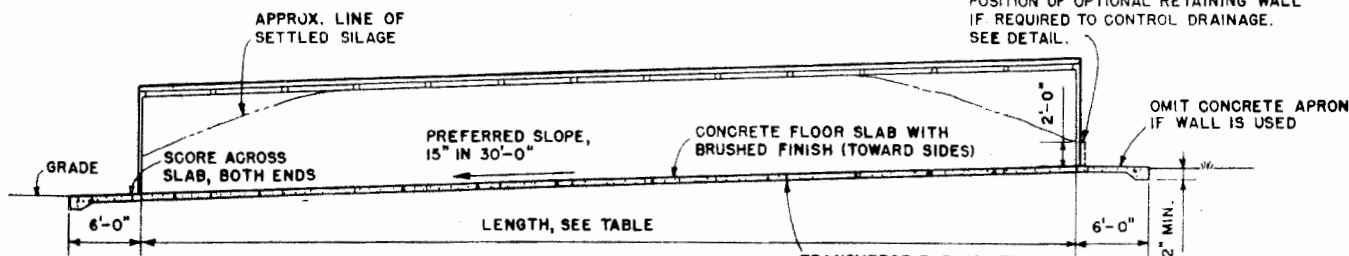


PERSPECTIVE OF
SILO TYPE "A"
READY TO BE FILLED



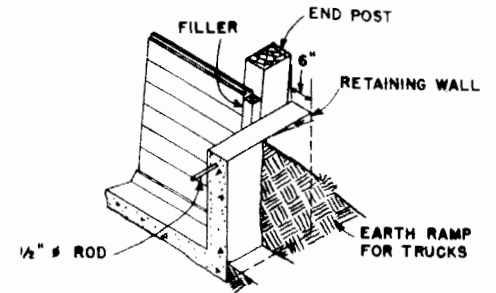
DETAIL OF OPTIONAL RETAINING WALL
TYPE "A" SILO
SCALE: 1/2"=1'-0"

NOTE: ALL CONCRETE TO BE 1:2 1/2:3 1/2 MIX, WITH NOT MORE THAN 6 GALLONS OF WATER PER BAG OF CEMENT.
ALL WOOD SHOULD BE PRESSURE-TREATED WITH PRESERVATIVE (AFTER CUTTING) TO 8 LBS. PER CUBIC FOOT RETENTION.
STAGGER END JOINTS OF PLANKS IN EACH ROW SO JOINTS FALL ON ALTERNATE POSTS.



LONGITUDINAL SECTION
TYPES "B & C" SILO
SCALE: 1/8"=1'-0"

TRANSVERSE EXP. JOINTS
NOT OVER 12'-0" O.C.
TYPE "C" SILO ONLY



DETAIL OF OPTIONAL RETAINING WALL
TYPES "B & C" SILO
SCALE: 1/2"=1'-0"

TYPES A, B, & C SILO

APPROXIMATE CAPACITIES

HERD SIZE	WIDTH OF SILO	LENGTH OF SILO			CAPACITY FOR EACH 6 FT. OF LENGTH
		60 FT.	78 FT.	90 FT.	
30 HEAD	16 FT.	114 TONS	163 TONS	196 TONS	16 TONS
37 "	20 "	141 "	202 "	242 "	20 "
44 "	24 "	168 "	240 "	288 "	24 "
51 "	28 "	195 "	278 "	334 "	28 "
58 "	32 "	222 "	317 "	380 "	32 "

CAPACITY IS BASED ON SILAGE WEIGHT OF 40 LBS. PER CUBIC FOOT AND SETTLED DEPTH OF 8 FEET, EXCEPT AT ENDS.

WIDTH OF SILO IS BASED ON HERO SIZE AND ON AN AVERAGE CONSUMPTION OF 60 LBS. OF SILAGE PER ANIMAL PER DAY. LENGTH OF SILO IS BASED ON 4" DAILY RATE OF USE FOR WARM WEATHER CONDITIONS. LENGTH MAY BE VARIED IN UNITS OF 6 FEET.

FOR SELF-FEEDING, WITH FREE ACCESS, A SILO WIDTH OF 3' TO 6' PER HEAD IS REQUIRED.

DETAILS OF MOVABLE FENCES FOR SELF-FEEDING ARE SHOWN ON PLAN NO. 5872

CAUTION:

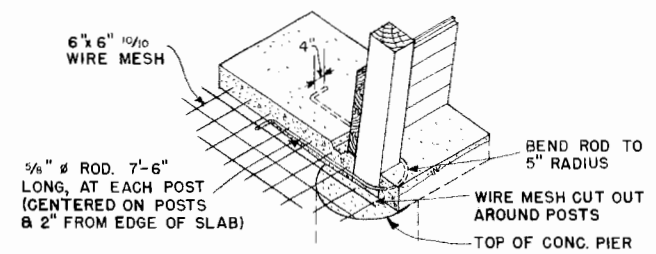
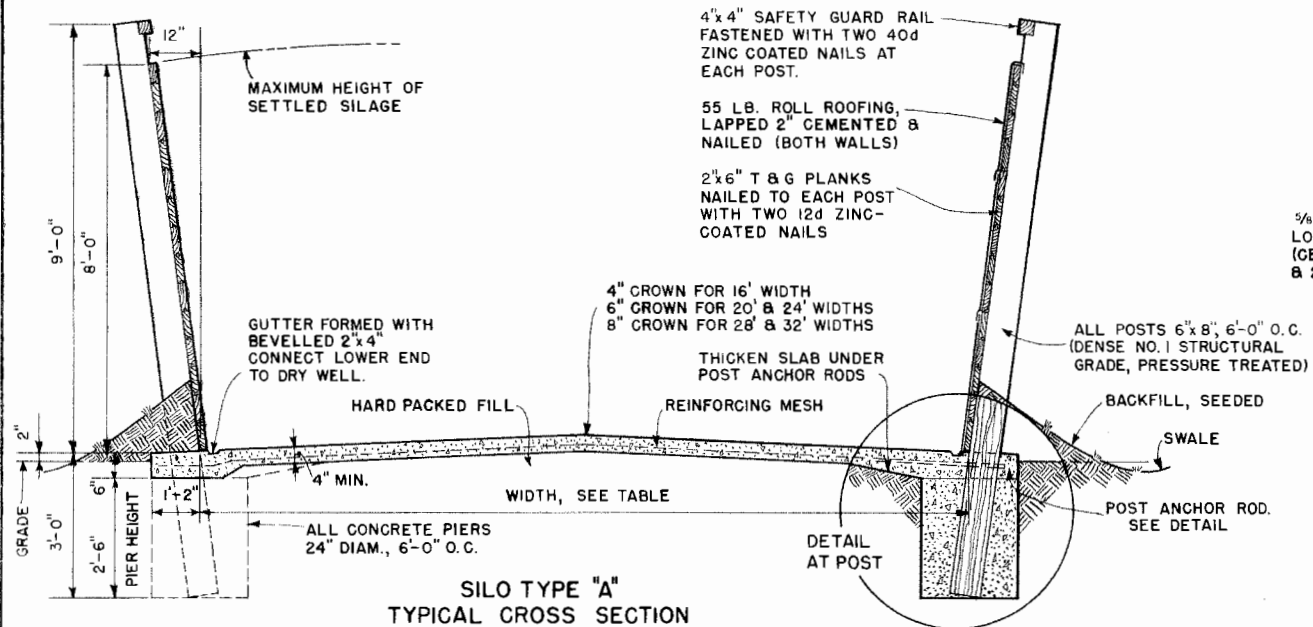
SOME PRESSURE TREATED POSTS & LUMBER USE PRESERVATIVES THAT EPA DOES NOT ALLOW IN CONTACT WITH FEED. IN SUCH CASES, PLYWOOD OR PLASTIC SHOULD BE USED AS A LINER. CHECK SUPPLIER OR LABELS FOR GUIDANCE.



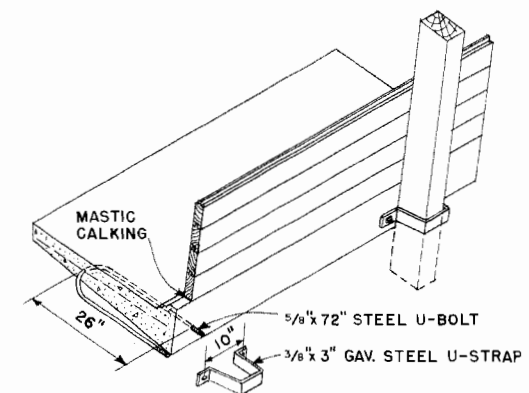
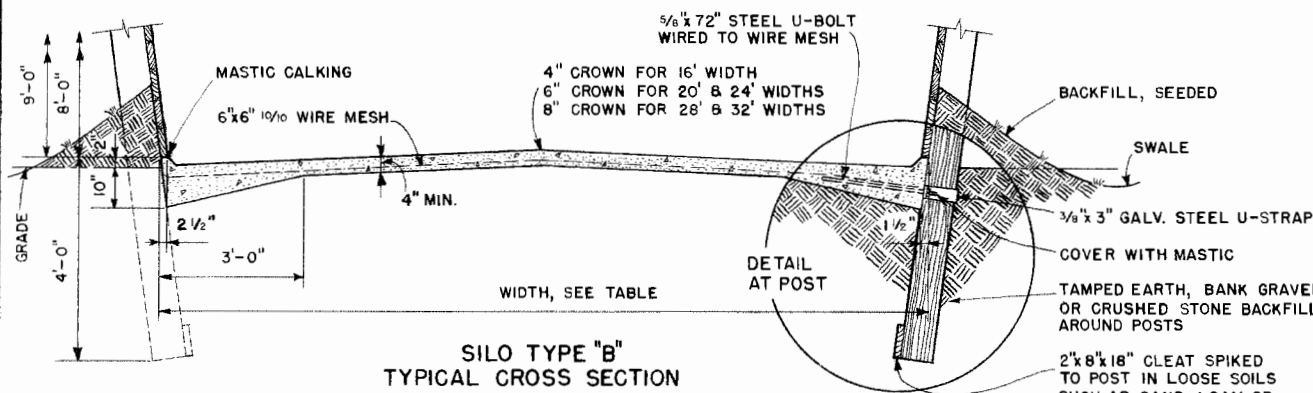
SILO TYPES A, B, & C

USDA '68 EX.6048 SHEET 1 OF 2

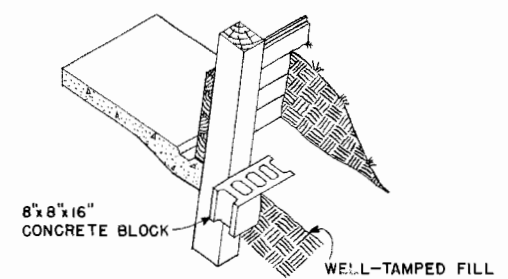
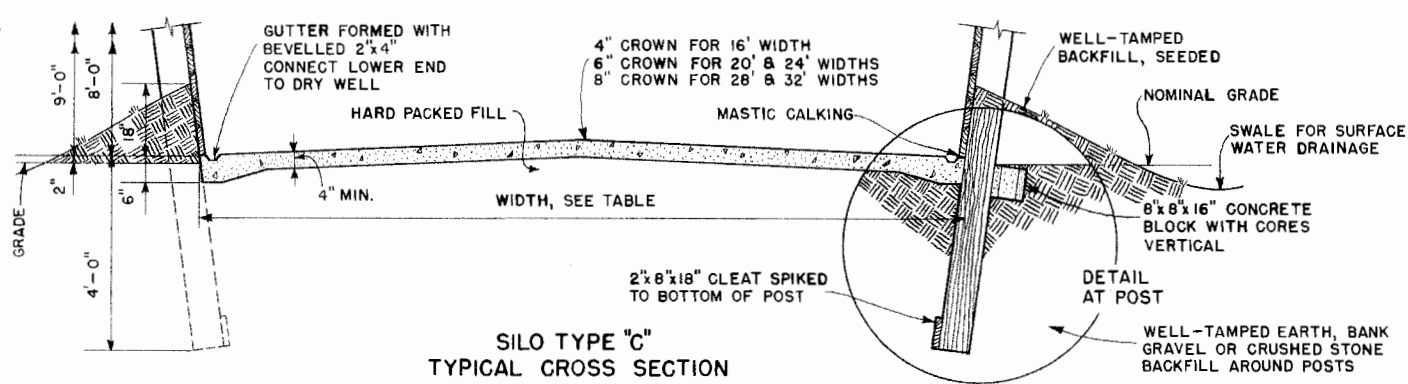
REVISED '88



DETAIL OF POST ANCHORAGE SILO TYPE "A"



DETAIL OF POST ANCHORAGE SILO TYPE "B"



POST DETAIL SILO TYPE "C"

NOTE: SCALE: 1/2"=1'-0" THRU-OUT UNLESS OTHERWISE NOTED.

LSU
AgCenter
Research & Extension

SILO TYPES A,B,&C.

USDA	'68	EX. 6048	SHEET 2 OF 2
------	-----	----------	--------------

Disclaimer

This site makes available conceptual plans that can be helpful in developing building layouts and selecting equipment for various agricultural applications. These plans do not necessarily represent the most current technology or construction codes. They are not construction plans and do not replace the need for competent design assistance in developing safe, legal and well-functioning agricultural building system. The LSU Agriculture Center, the Mid-West Plan Service, the United States Department of Agriculture and none of the cooperating land-grant universities warranty these plans.