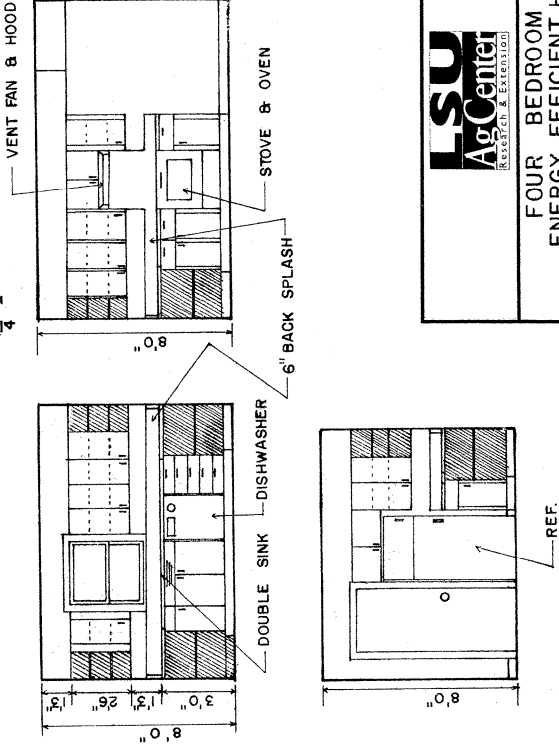
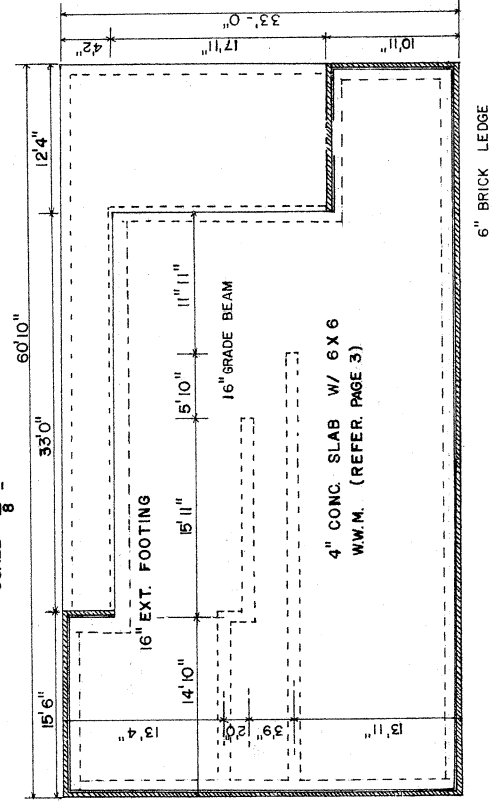


ELEVATIONS
SCALE $\frac{1}{8} = 1'0"$

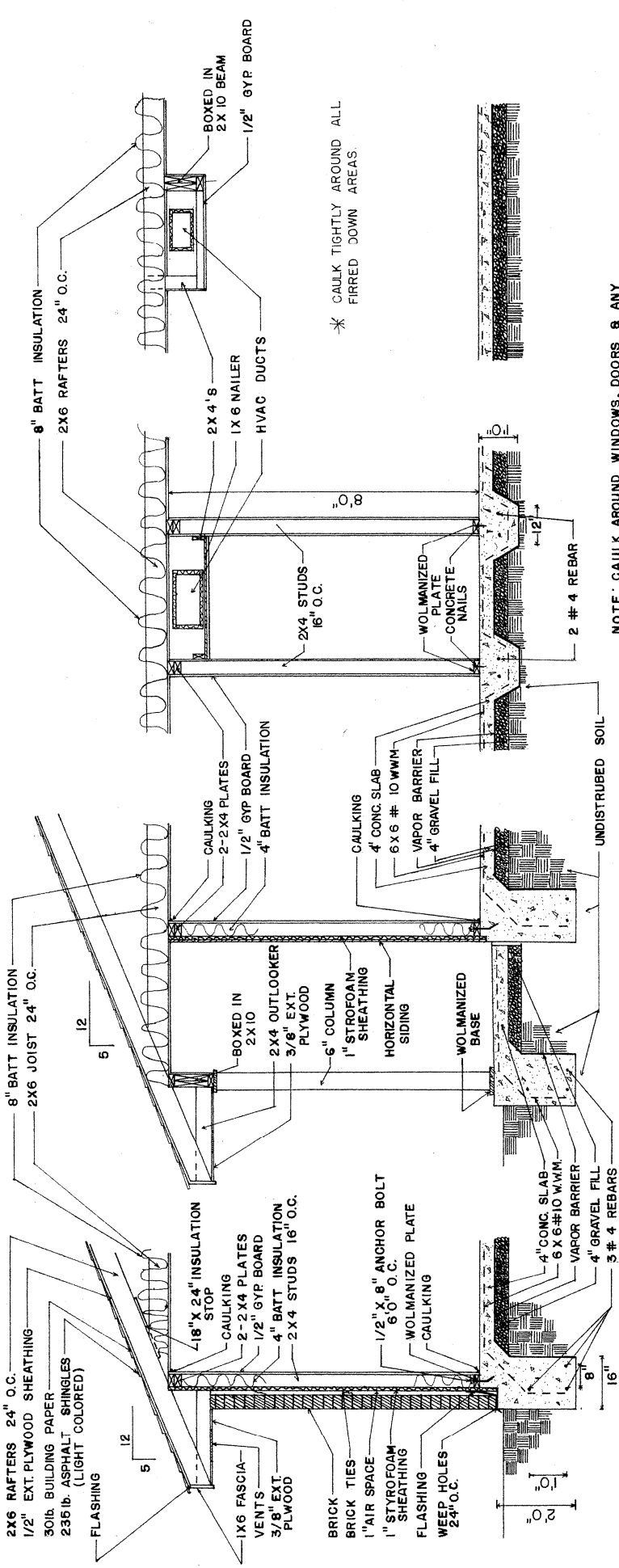
KITCHEN ELEVATIONS
SCALE $\frac{1}{4} = 1'0"$



FOUNDATION PLAN
SCALE $\frac{1}{8} = 1'0"$



| | | | |
|-------------|--|--|--------------------|
| | | FOUR BEDROOM ENERGY EFFICIENT HOUSE | |
| | | ENGINEER F.E. BAKER | SCALE 1/4" = 1'-0" |
| DRAWN BY RS | | SHEET 1 OF 3 | |
| TRACED BY | | DATE 10-2-79 NO. 60-9 | |



SECTION A-A

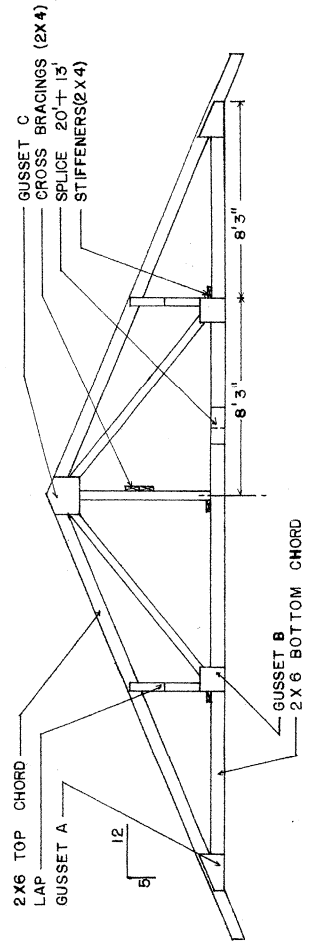
SECTION B-B

SECTION C-C

SECTION D-D

NOTE: CAULK AROUND WINDOWS, DOORS & ANY OTHER PUNCTURES TO THE EXTERIOR WALLS.

SECTIONS
1/2" = 1' 0"



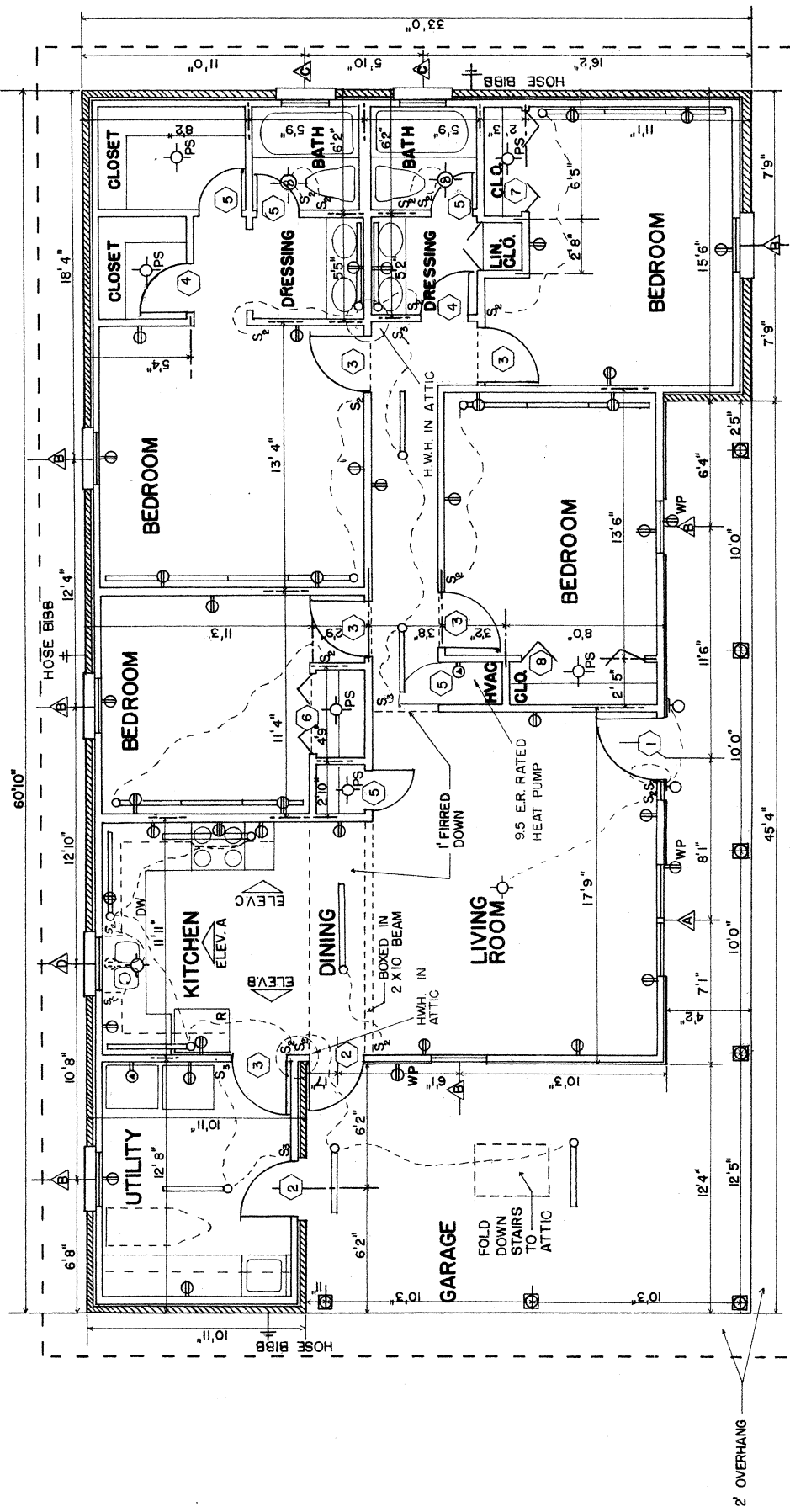
TRUSS DESIGN
1/2" = 1' 0"

| GUSSET SIZES | H | W |
|--------------|-----|-----|
| GUSSET A | 6" | 18" |
| GUSSET B | 12" | 12" |
| GUSSET C | 12" | 18" |

LSU
AgCenter
RESEARCH & EXTENSION

FOUR BEDROOM
ENERGY EFFICIENT HOUSE

ENGINEER F.E. BAKER SCALE 1/4" = 1'-0"
DRAWN BY RS SHEET 2 OF 3
TRACED BY DATE 10-2-79 NO. 60-9



FLOOR PLAN

SCALE - 1/4" = 1'0"

| SYMBOL | DESCRIPTION |
|----------------|-------------------------------|
| S ₂ | TWO POLE SWITCH |
| S ₃ | THREE POLE SWITCH |
| ⊕ | CEILING OUTLET |
| ⊖ | FLOUORSCENT TUBES |
| ⊖ | WALL MOUNTED |
| ⊖ | DUPLEX CONVENIENCE OUTLET |
| ⊖ | WATERPROOF CONVENIENCE OUTLET |
| ⊖ | RANGE OUTLET |
| ⊖ | SPECIAL PURPOSE OUTLET |

* CAULK AROUND ALL OUTLETS & SWITCHES.

| SYMBOL | SIZE | DESCRIPTION |
|--------|-------------|--------------------------------|
| ① | 4'0" - 6'8" | METAL & URETHANE, 1" SIDELIGHT |
| ② | 2'8" - 6'8" | " |
| ③ | 2'8" - 6'8" | H.C. INTERIOR DOOR |
| ④ | 2'4" - 6'8" | " |
| ⑤ | 2'0" - 6'8" | " |
| ⑥ | 4'0" - 6'8" | FOLDING DOOR |
| ⑦ | 5'0" - 6'8" | " |
| ⑧ | 6'0" - 6'0" | " |

* CAULK & WEATHER STRIP AROUND ALL DOORS, WINDOWS, & ANY OTHER PENETRATIONS IN THE EXTERIOR WALLS.

| SYMBOL | SASH | NO. | DESCRIPTION |
|--------|-------------|-----|-------------------|
| △ | 2'8" - 4'6" | 1 | TWIN, ALUM., S.H. |
| △ | 2'8" - 4'6" | 6 | ALM., S.H. |
| △ | 2'4" - 3'2" | 2 | ALM., S.H. |
| △ | 2'8" - 3'2" | 1 | ALM., S.H. |

* NOTE: USE DBL. PANE OR INSULATED GLASS WINDOWS.



FOUR BEDROOM ENERGY EFFICIENT HOUSE

ENGINEER F. E. BAKER
DRAWN BY RS
DATE 10-2-79
NO. 60-9