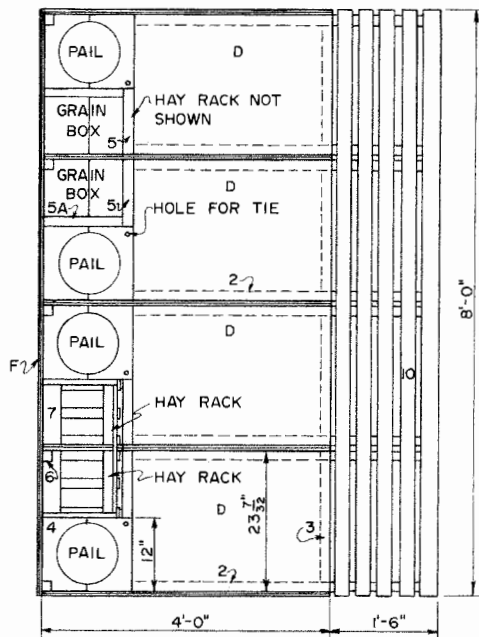
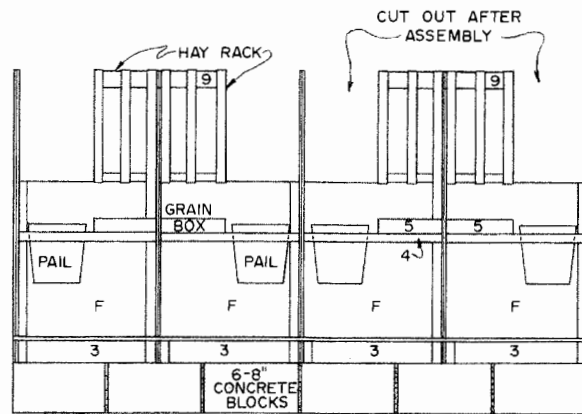


CROSS SECTION



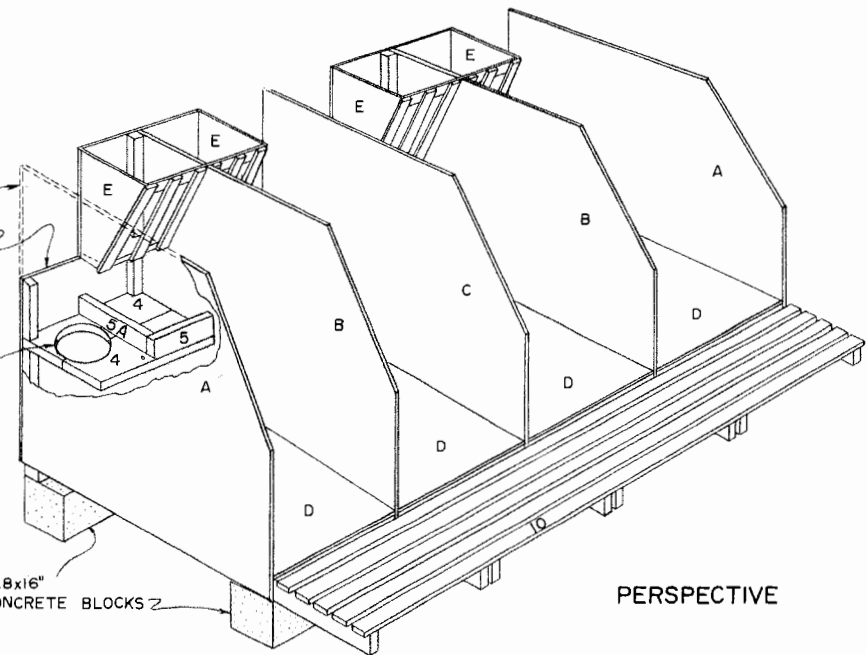
PLAN VIEW



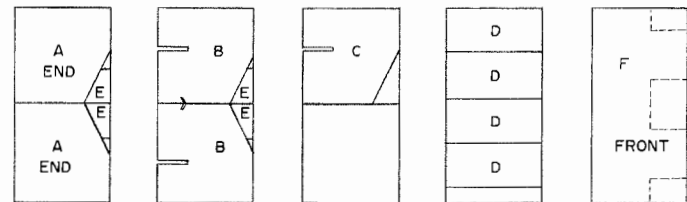
REAR VIEW

END OMITTED FOR CLARITY  
 CUT OUT AFTER ASSEMBLY IF FED FROM THE FRONT  
 CUT PAIL OPENING BEFORE ASSEMBLY

8x8x16" CONCRETE BLOCKS



PERSPECTIVE



PLYWOOD CUTTING DIAGRAM  
 SCALE: 1/4" = 1'-0"

PARTS LIST

1. FRONT ELEVATION BLOCK	1 PC 2x4x8'-0"
2. BED PIECES	8 PCS 2x4x5'-6"
3. FILLER BLOCKS	4 PCS 2x4x20"
4. TRAY BOTTOM	2 PCS 2x8x8'-0"
5. BOX EDGE	4 PCS 2x4x12"
5A. BOX EDGE	4 PCS 2x4x14"
6. CORNER BLOCKS	5 PCS 2x2x4'-0"
7. HAY RACK BOTTOM	4 PCS 2x4x12"
8. HAY RACK SLATS	12 PCS 1x2x20"
9. HAY RACK TOP RAIL	2 PCS 1x3x24"
10. REAR FLOOR SLATS	5 PCS 1x3x8'-0"

MATERIALS NEEDED FOR A SECTION OF FOUR STALLS

8 PCS 2x4x12'-0"	FOR PARTS NUMBER 1,2,3,5A,7
2 PCS 2x8x8'-0"	FOR PART NUMBER 4
44 LINEAR FT. 1x3	FOR PARTS NUMBER 9,10
5 SHEETS 4x8 PLYWOOD, 5/8"	EXTERIOR CUT AS IN DIAGRAMS
12 8x8x16" CONCRETE BLOCKS	FOR BASE
PORTLAND CEMENT MORTAR	
RUSTPROOF NAILS OR SCREWS	
1 PC 2x2x12'-0"	FOR PART NUMBER 6
1 PC 2x2x8'-0"	FOR PART NUMBER 6
20 LINEAR FT. 1x2	FOR PART NUMBER 8

NOTE: SCALE: 3/4" = 1'-0" UNLESS OTHERWISE NOTED.

NOTE:  
 MEASUREMENTS OF SOME PARTS ARE NOT DEFINITE. DIMENSION LUMBER VARIES SLIGHTLY IN SIZE, SO PIECES MUST BE CUT TO FIT.

**LSU**  
**AgCenter**  
Research & Extension

---

**CALF TIE STALL**

---

PA. '68 EX. 6057 SHEET 1 OF 1

## Disclaimer

This site makes available conceptual plans that can be helpful in developing building layouts and selecting equipment for various agricultural applications. These plans do not necessarily represent the most current technology or construction codes. They are not construction plans and do not replace the need for competent design assistance in developing safe, legal and well-functioning agricultural building system. The LSU Agriculture Center, the Mid-West Plan Service, the United States Department of Agriculture and none of the cooperating land-grant universities warranty these plans.