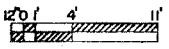
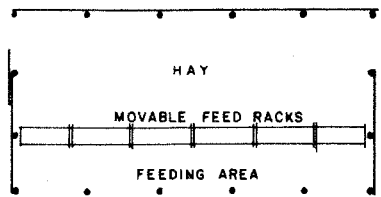


SHEEP BARN

(SEE PLAN NO. 5733 FOR INTERIOR DETAIL)



SCALE 1/8" = 1'-0"

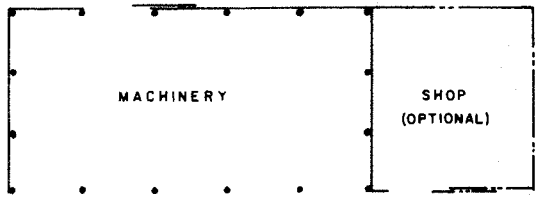


CATTLE & HAY BARN

CAPACITY 24 TO 32 HEAD
(SEE PLAN NO. 5794 FOR INTERIOR DETAIL)



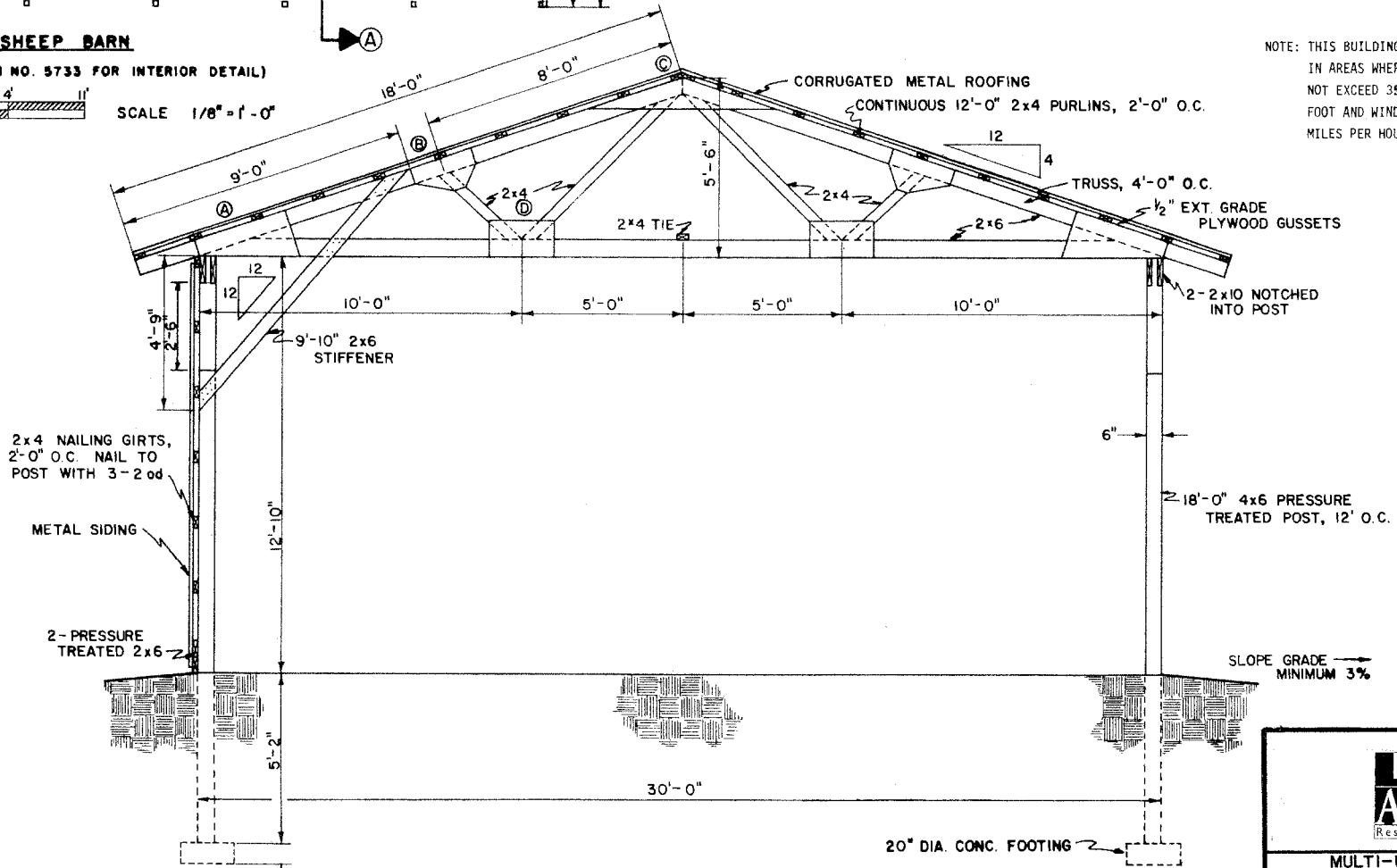
SCALE 1/16" = 1'-0"



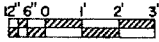
MACHINERY STORAGE

(SEE PLAN NO. 5734 FOR INTERIOR DETAIL)

NOTE: THIS BUILDING IS DESIGNED FOR USE IN AREAS WHERE THE SNOW LOAD DOES NOT EXCEED 35 POUNDS PER SQUARE FOOT AND WINDS ARE NOT ABOVE 80 MILES PER HOUR.



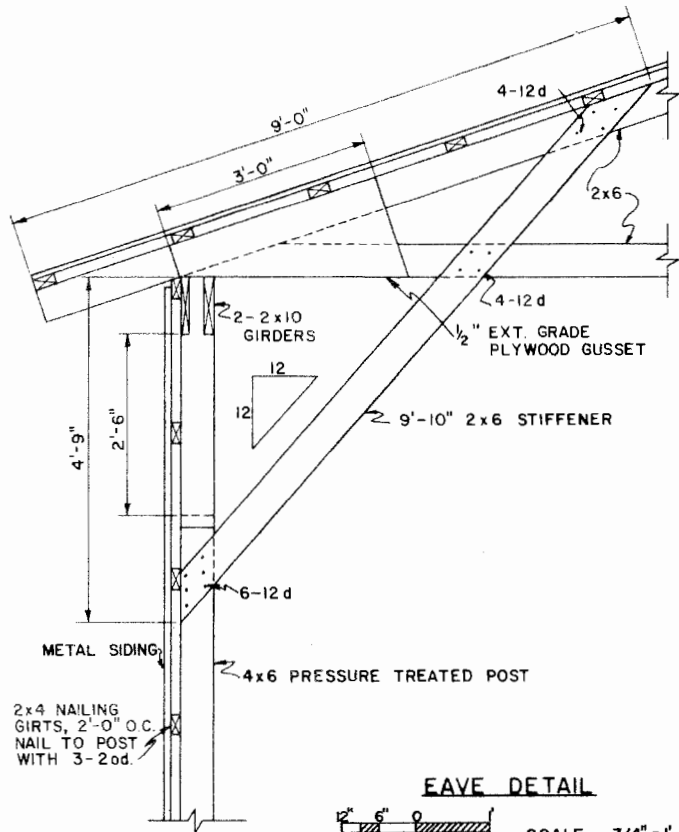
SECTION A-A



SCALE 3/8" = 1'-0"

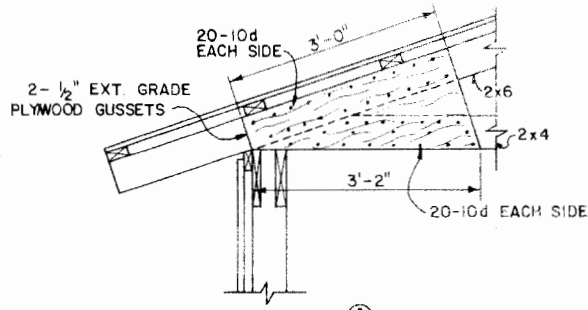


MULTI-USE POLE BARN FOR HEAVY SNOW AREAS

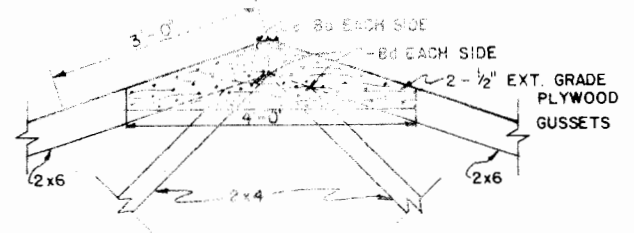


EAVE DETAIL

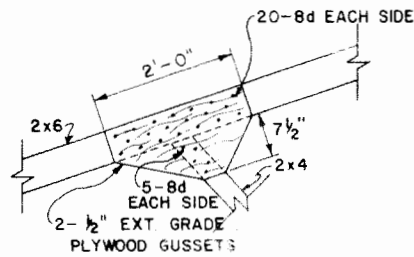
SCALE 3/4" = 1'-0"



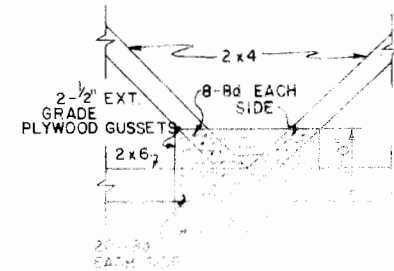
(A)



(C)

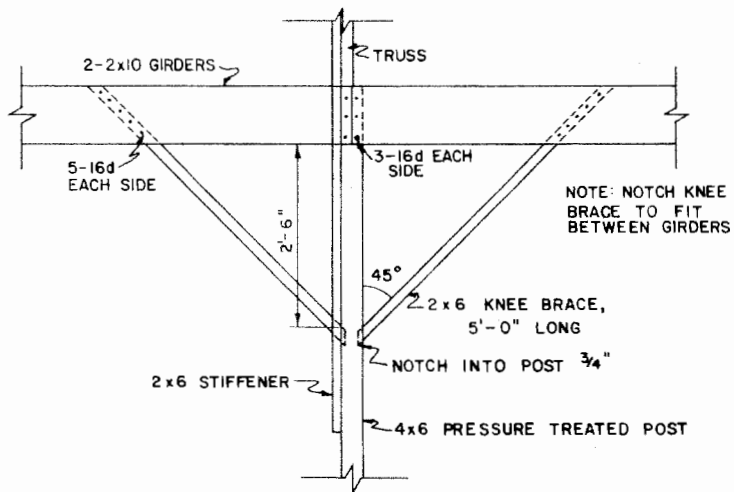


(B)



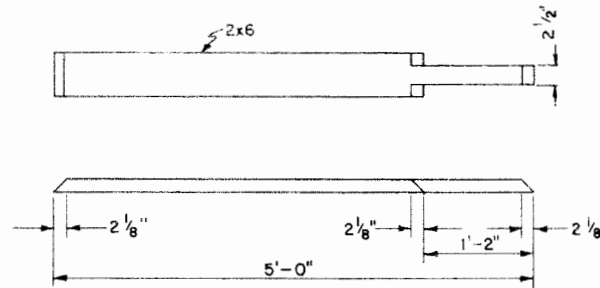
GUSSET DETAILS

SCALE 3/4" = 1'-0"



KNEE BRACE DETAIL

SCALE 3/4" = 1'-0"



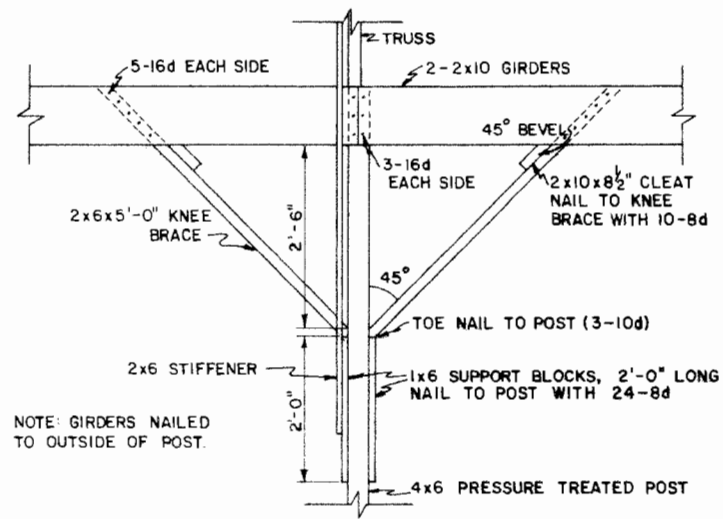
KNEE BRACE CUTTING DIAGRAM

SCALE 1" = 1'-0"

LSU
AgCenter
Research & Extension

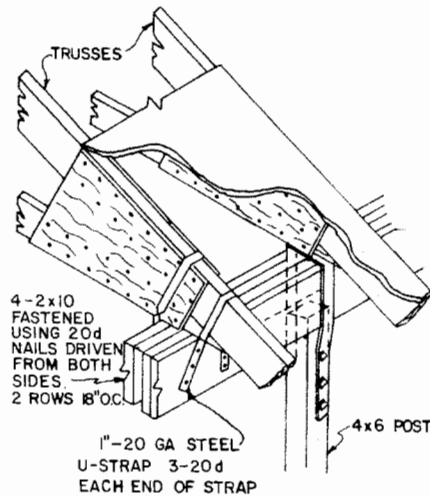
MULTI-USE POLE BARN
FOR HEAVY SNOW AREAS

USDA '84 6362 SHEET 2 OF 3

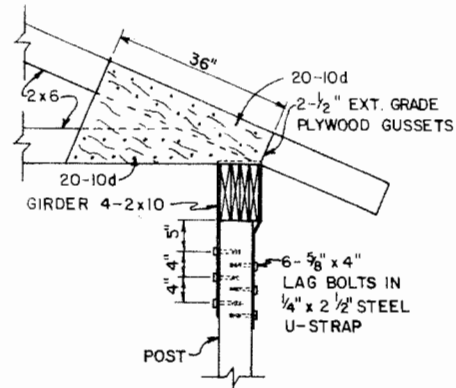


NOTE: GIRDERS NAILED TO OUTSIDE OF POST.

KNEE BRACES



ISOMETRIC



EAVE DETAIL

ALTERNATIVE DETAILS

SCALE 3/4" = 1' - 0"

CONSTRUCTION WITHOUT KNEE BRACES



MULTI-USE POLE BARN FOR HEAVY SNOW AREAS

Disclaimer

This site makes available conceptual plans that can be helpful in developing building layouts and selecting equipment for various agricultural applications. These plans do not necessarily represent the most current technology or construction codes. They are not construction plans and do not replace the need for competent design assistance in developing safe, legal and well-functioning agricultural building system. The LSU Agriculture Center, the Mid-West Plan Service, the United States Department of Agriculture and none of the cooperating land-grant universities warranty these plans.