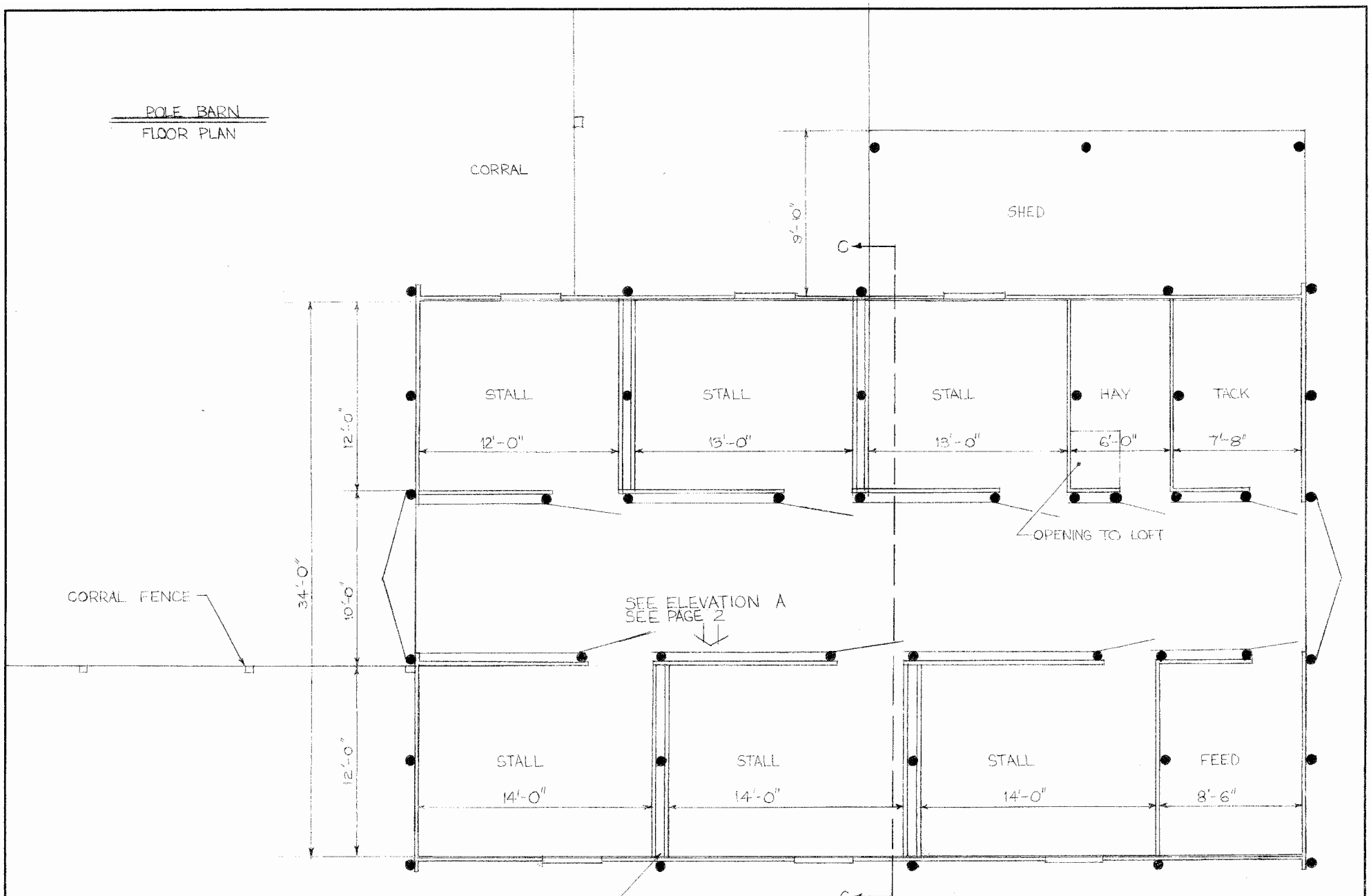


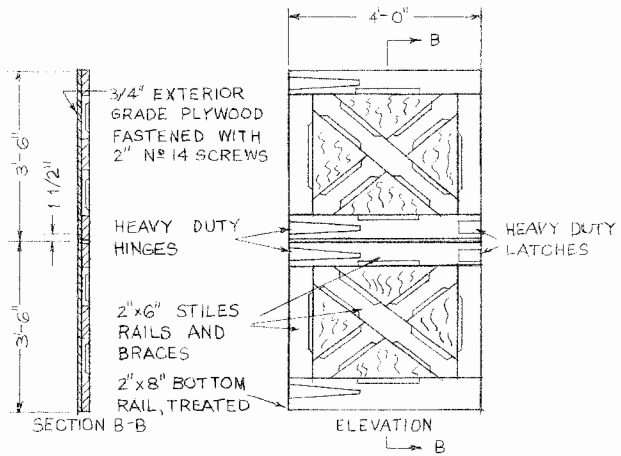
POLE BARN
FLOOR PLAN



SCALE: 1/4" = 1'-0"

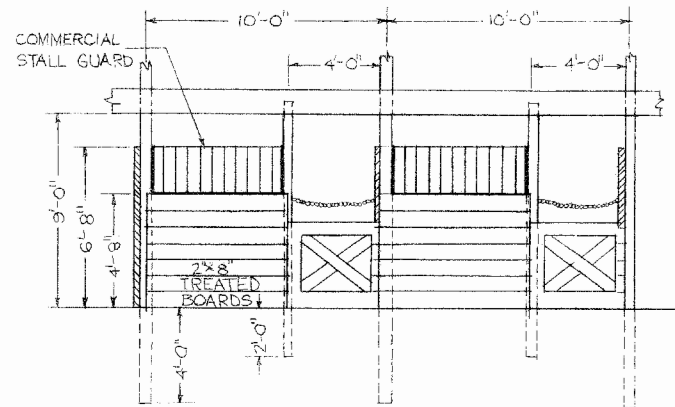
DOUBLE WALL PARTITION

LSU AgCenter <small>Research & Extension</small>	
HORSE BARN - Dr. Jim Cody	
ENGINEER: G. BAKER	SCALE: 1/4" = 1'-0"
DRAWN BY: RANDY BEZET	SHEET: 1 OF 2
TRACED BY: RANDY BEZET	DATE: 2-82 NO. 58-07



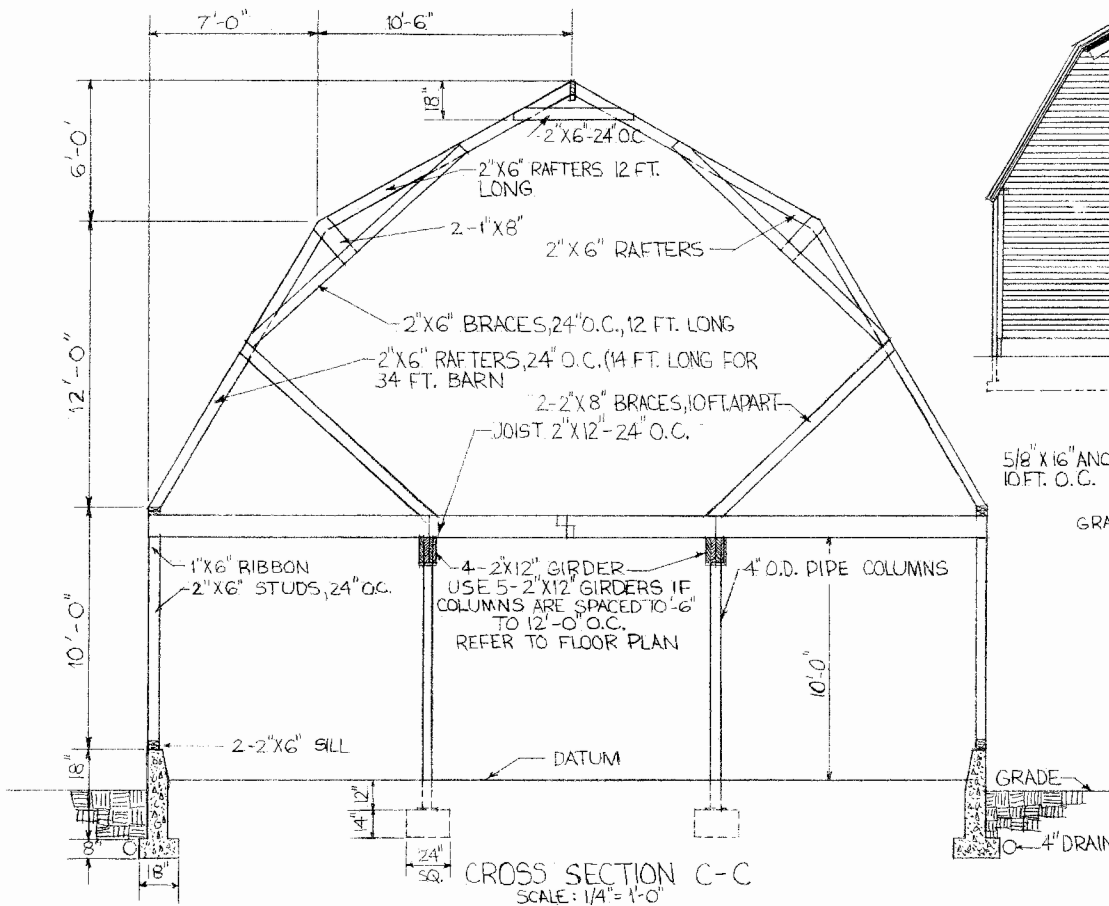
STALL DOOR DETAILS

SCALE 1/2" = 1'-0"



ELEVATION A
STALL DETAIL

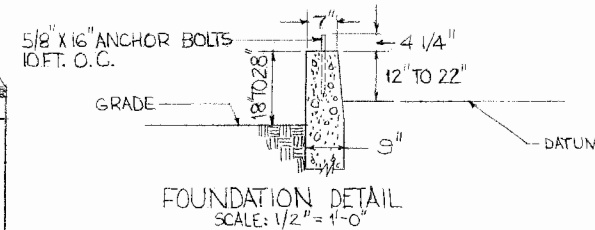
SCALE 1/4" = 1'-0"



CROSS SECTION C-C
SCALE 1/4" = 1'-0"



END ELEVATION
SCALE: 1/8" = 1'-0"



FOUNDATION DETAIL
SCALE: 1/2" = 1'-0"



HORSE BARN - DeJin Cody

ENGINEER BAKER	SCALE AS SHOWN
DRAWN BY R. B.	SHEET 2 OF 2
TRACED BY R. B.	DATE 2-82 NO. 58-07

Disclaimer

This site makes available conceptual plans that can be helpful in developing building layouts and selecting equipment for various agricultural applications. These plans do not necessarily represent the most current technology or construction codes. They are not construction plans and do not replace the need for competent design assistance in developing safe, legal and well-functioning agricultural building system. The LSU Agriculture Center, the Mid-West Plan Service, the United States Department of Agriculture and none of the cooperating land-grant universities warranty these plans.