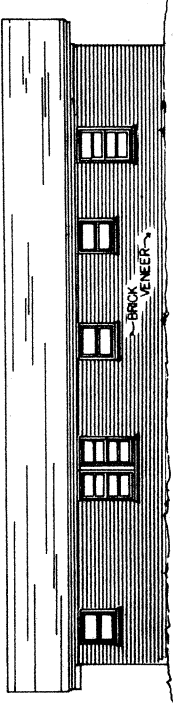
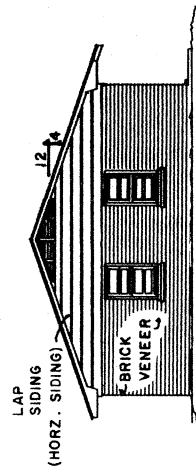


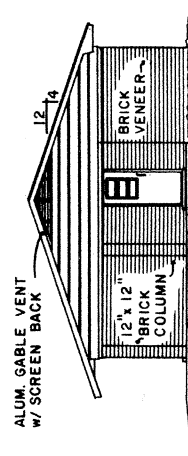
SOUTH ELEVATION



NORTH ELEVATION

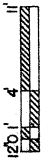


EAST ELEVATION



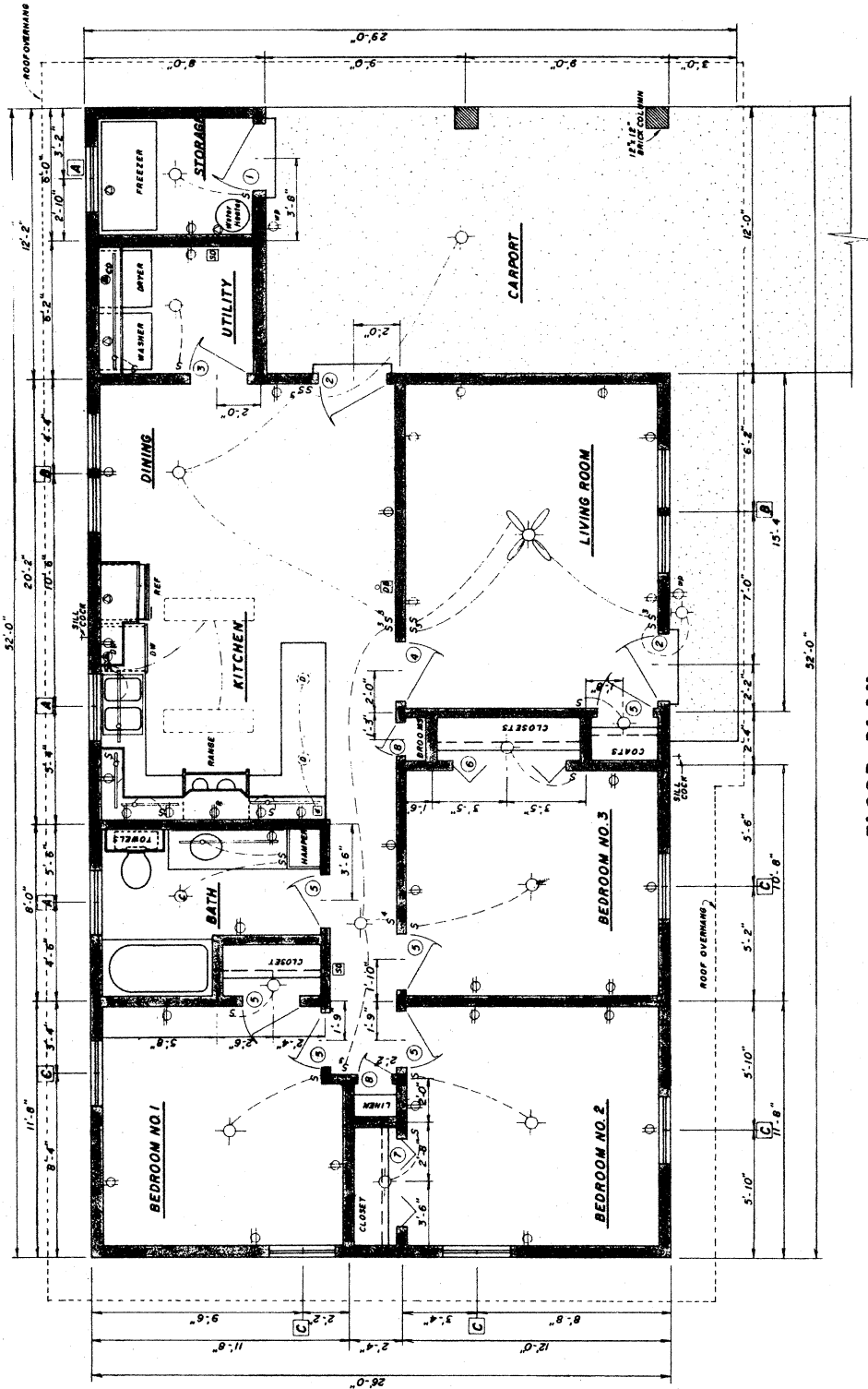
WEST ELEVATION

SCALE 1/8" = 1'-0"



**CONSTRUCTION CHECKLIST**

1. CONSULT LOCAL BUILDING CODES AND LEADING AUTHORITIES BEFORE BEGINNING CONSTRUCTION (RAFTERS MEET 30 LB/FT<sup>2</sup> SNOW LOAD CRITERIA).
2. ADEQUATELY NAIL AND ANCHOR JOINTS.
3. USE 1 x 6 COLLAR BEAM AT EVERY RAFTER.
4. SHEATH WITH 1/2" PLYWOOD OR HIGH DENSITY FIBERBOARD OR USE DIAGONAL BRACING IN CORNERS.
5. USE EXTERIOR GLEUED PLYWOOD WHEREVER IT MAY BE WETTED DURING OR AFTER CONSTRUCTION.
6. PRESSURE TREAT ALL WOOD WITH GROUND CONTACT AND PROVIDE OTHER NEEDED TERMITE CONTROL.
7. R VALUES DEPEND ON LOCAL CLIMATE AND FUEL COST.
8. PROVIDE 1 SQ. FT. OF ATTIC VENT OPENINGS FOR EACH 150 SQ. FT. OF CEILING.
9. WEATHERIZE ALL OPENINGS & JOINTS.



**FLOOR PLAN**

SCALE: 1/4" = 1'-0"

**WINDOW SCHEDULE**

SYMBOL	SIZE	DESCRIPTION	NO. REQ.
A	3'-0" x 3'-0"	SINGLE HUNG	3
B	3'-0" x 4'-6"	TWIN-SINGL HUNG	2
C	3'-0" x 4'-6"	SINGLE HUNG	5

ALL WINDOWS SHALL BE CERTIFIED DOUBLE GLAZED WITH ALUMINUM FRAME.

**ELECTRICAL SCHEDULE**

SYMBOL	DESCRIPTION	SYMBOL	DESCRIPTION	SYMBOL	DESCRIPTION
S	SINGLE POLE SWITCH	DB	DOOR BELL & CHIMES (push button @ each)	⊕	COMB. VENT FAN, LIGHT AND HEATER
S <sub>3</sub>	THREE WAY SWITCH	OW	DISHWASHER OUTLET	⊕	BRACKET LIGHT
S <sub>4</sub>	FOUR WAY SWITCH	CO	CLOTHES DRYER OUTLET	⊕	RANGE OUTLET
D	DINER SWITCH	⊕	RECESSED DOWN LIGHT WITH FLOOR FLUORESCENT STRIP IN SOFFIT, COVE OR CABINET	⊕	SPECIAL PURPOSE LIGHT
⊕	DUPLEX RECEPTACLE	⊕	LIGHTING OUTLET	⊕	SMOKE/GAS BATTERY OPERATED DETECTOR
⊕	WATERPROOF OUTLET	⊕		⊕	CEILING PADDOLE FAN W/ LIGHT AND ADJ. SPEEDS

**DOOR SCHEDULE**

SYMBOL	SIZE	DESCRIPTION	NO. REQ.
1	3'-0" x 6'-8"	EXT. STEEL DOOR	1
2	3'-0" x 6'-8"	EXT. STEEL DR. w/ MULTI-LITE TOP	2
3	3'-0" x 6'-8"	INT. PANEL DR.	1
4	2'-8" x 6'-8"	" " "	1

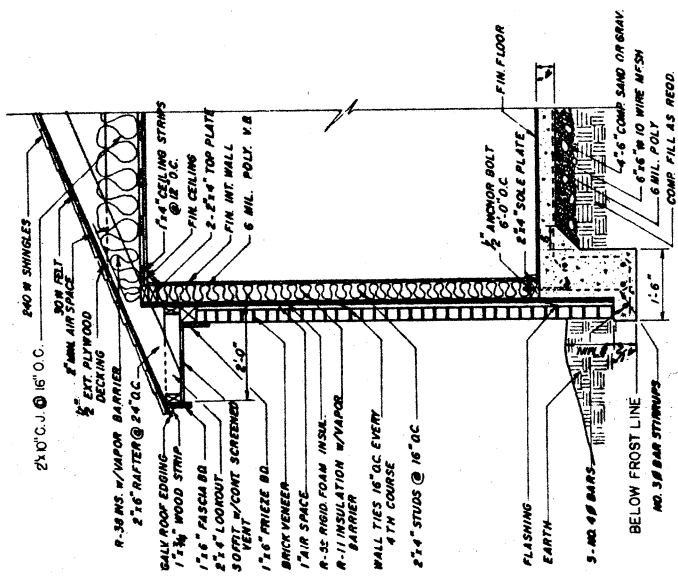
ALL EXTERIOR DOORS SHALL BE STEEL CLAD W/ INSULATED CORES

**LSU AgCenter**  
Research & Extension

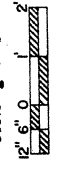
3-BR. EFFICIENT BRICK VENEER

7235

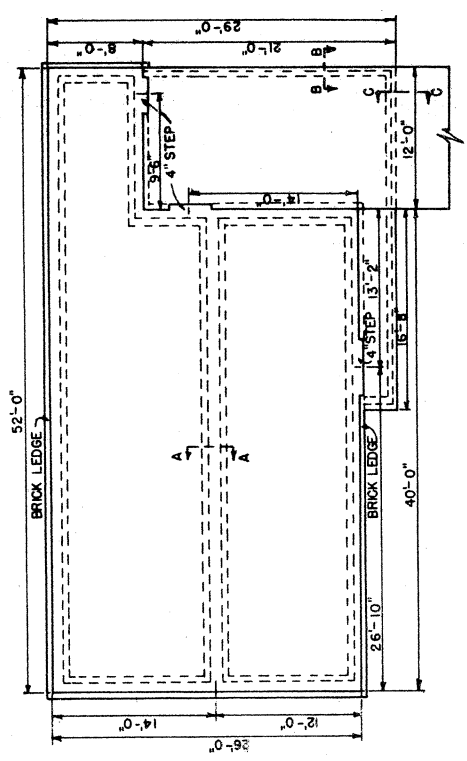
SHEET 2 OF 3



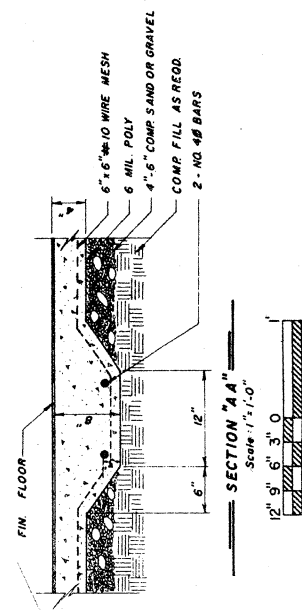
**TYP. WALL SECTION**  
Scale: 1/2" = 1'-0"



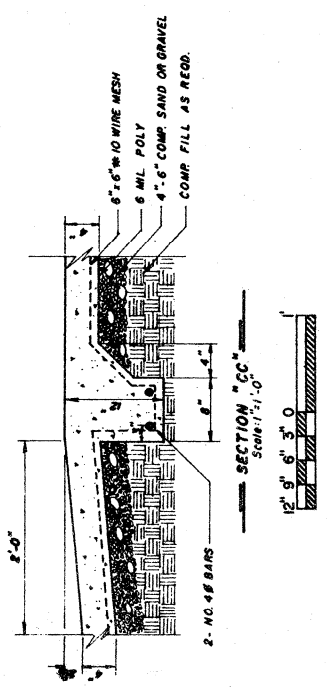
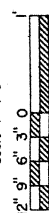
FOR OPTIMUM ENERGY EFFICIENCY AND LOWER UTILITY COST, SITE WITH ROOF RIDGE EAST TO WEST AS SHOWN.



**FOUNDATION PLAN**  
SCALE -- 1/8" = 1'-0"



**SECTION "AA"**  
Scale: 1/2" = 1'-0"



**SECTION "BB"**  
Scale: 1/2" = 1'-0"

