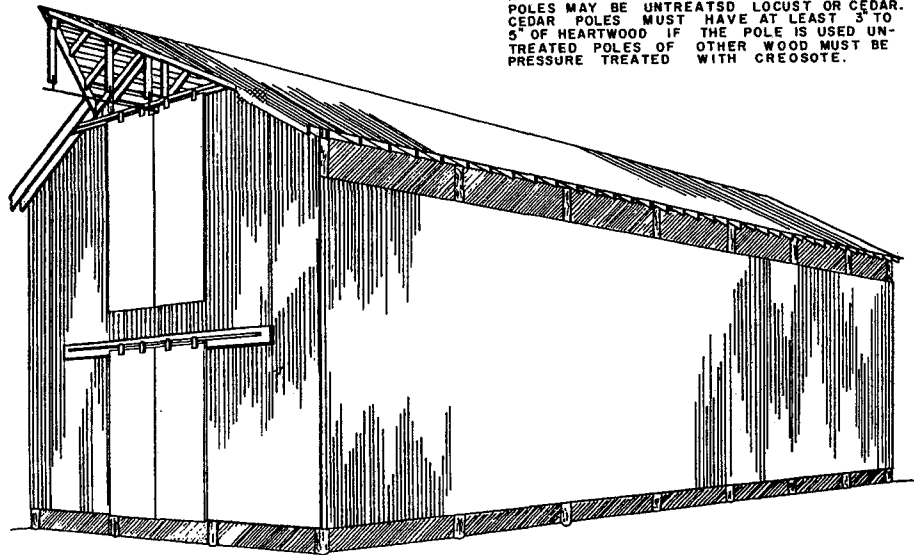


APPROXIMATE CAPACITY OF BARN		
MATERIAL	DEPTH IN FEET	TONS PER FOOT OF LENGTH
LOOSE HAY - FIELD CURED	18	$\frac{7}{8}$
BALED STRAW	18	$2\frac{1}{6}$
BALED HAY - FIELD CURED	18	$2\frac{1}{2}$
LOOSE HAY - ON HAY DRIER	12 to 15	$\frac{1}{8}$ to $1\frac{1}{5}$
CHOPPED HAY - ON HAY DRIER	12 to 15	1 to $1\frac{1}{3}$
BALED HAY - ON HAY DRIER	12	$1\frac{1}{4}$

#### NOTE

POLES USED FOR THIS BARN MUST HAVE A MINIMUM TOP DIAMETER OF 6 INCHES. POLES MAY BE UNTREATED LOCUST OR CEDAR. CEDAR POLES MUST HAVE AT LEAST 3 TO 5" OF HEARTWOOD IF THE POLE IS USED UNTREATED. POLES OF OTHER WOOD MUST BE PRESSURE TREATED WITH CREOSOTE.



PICTURE VIEW

## BILL OF MATERIALS

### SIDES & ENDS

POLES - 16, 25'-0" LONG, WITH 6" MINIMUM TOP DIAMETER  
 4, 31'-0" LONG, WITH 6" MINIMUM TOP DIAMETER  
 NAILING GIRTS - 95 PCS. 2"x6"x10'-0"  
 28 PCS. 2"x6"x8'-0"  
 LATERAL BRACES - 36 PCS. 2"x4"x8'-0"  
 SIDING - TO COVER 3100 SQUARE FEET  
 PLATES - 14 PCS. 2"x6"x10'-0"  
 PLATE GIRDELS - 14 PCS. 2"x10"x10'-0"  
 SLIDING DOORS - 4, 4'-2"x10'-0"  
 2 PCS. 2"x10"x16'-0"  
 TRACK & HANGERS

### ROOF

RAFTERS - 76 PCS. 2"x6"x16'-0"  
 VERGE RAFTERS - 3 PCS. 1"x6"x16'-0"  
 CROSS TIES - 68 PCS. 2"x4"x18'-0"  
 CENTER TIES - 17 PCS. 2"x6"x10'-0"  
 COLLARS - 34 PCS. 1"x6"x8'-0"  
 KNEE BRACES - 16 PCS. 2"x4"x10'-0"  
 RIDGE BOARD - 6 PCS. 1"x8"x12'-0"  
 SHEATHING - 2550 LINEAR FEET OF 1"x4" BOARDS  
 ROOFING - 23 TO 24 SQUARES  
 RIDGE ROLL - 76 LINEAR FEET

### HAY HOOD

RAFTERS - 3 PCS. 2"x6"x10'-0"  
 RIDGEBOARD - 1 PC. 2"x10"x12'-0"  
 HANGERS - PCS. 2"x6"x10'-0"  
 SCABS - 1 PC. 1"x8"x8'-0"  
 TENSION RODS - 2, 1/2" DIA. x 8'-0" LONG THREADED BOTH ENDS

### MISCELLANEOUS

102 1/8" x 5" BOLTS WITH NUTS  
 204 1/8" WASHERS  
 20 d NAILS  
 HAY TRACK WITH BRACKETS, HANGERS, ETC.

### FOR EACH ADDITIONAL 10'-0" SECTION

### SIDES

POLES - 2, 25'-0" LONG  
 NAILING GIRTS - 12 PCS. 2"x6"x10'-0"  
 LATERAL BRACES - 4 PCS. 2"x4"x8'-0"  
 SIDING - TO COVER 320 SQUARE FEET  
 PLATES - 2 PCS. 2"x6"x10'-0"  
 PLATE GIRDELS - 2 PCS. 2"x10"x10'-0"

### ROOF

RAFTERS - 10 PCS. 2"x6"x16'-0"  
 CROSS TIES - 10 PCS. 2"x4"x18'-0"  
 CENTERS TIES - 5 PCS. 2"x6"x10'-0"  
 COLLARS - 5 PCS. 1"x6"x8'-0"  
 KNEE BRACES - 2 PCS. 2"x4"x10'-0"  
 RIDGEBOARD - 1 PC. 1"x8"x12'-0"  
 SHEATHING - 350 LINEAR FEET OF 1"x4" BOARDS  
 ROOFING - 3 1/2 SQUARES

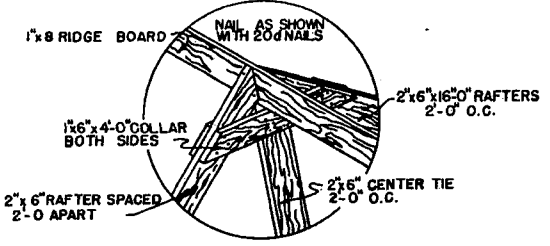
### MISCELLANEOUS

15, 1/8" BOLTS WITH NUTS  
 30, 1/8" WASHERS  
 20 d NAILS  
 HAY TRACK WITH BRACKETS, HANGERS, ETC.

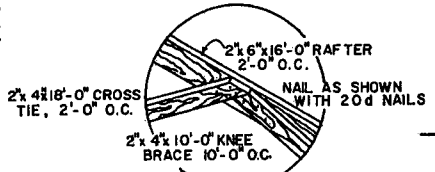


## HAY STORAGE BARN

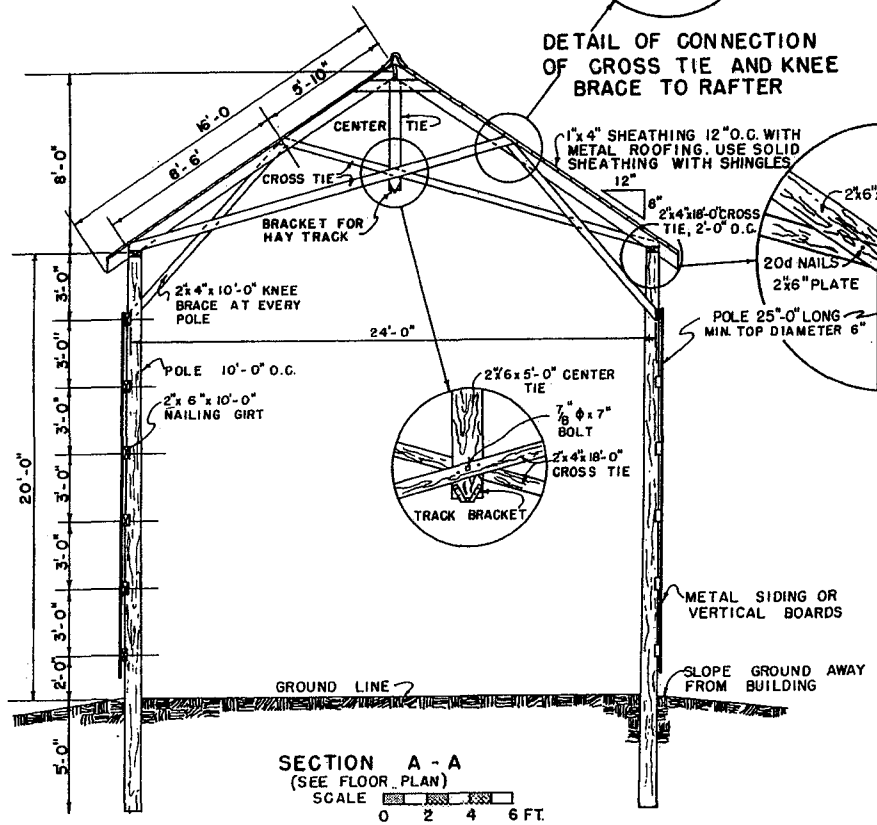
VA. '49 EX 57 75 SHEET 1 OF 2



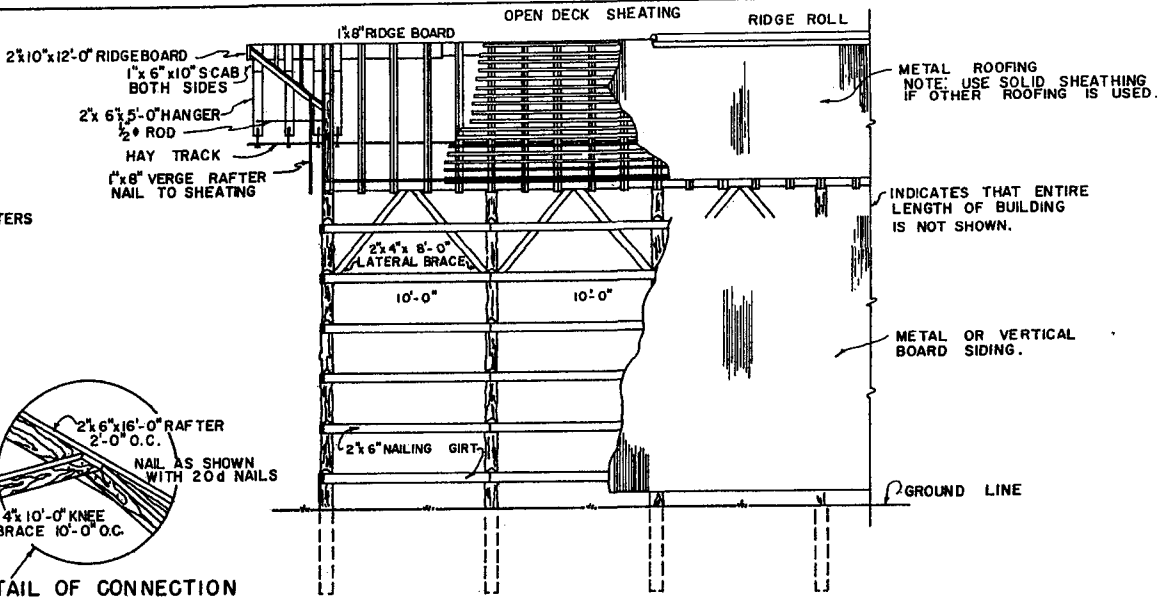
**DETAIL OF RAFTER FRAMING AT RIDGE**



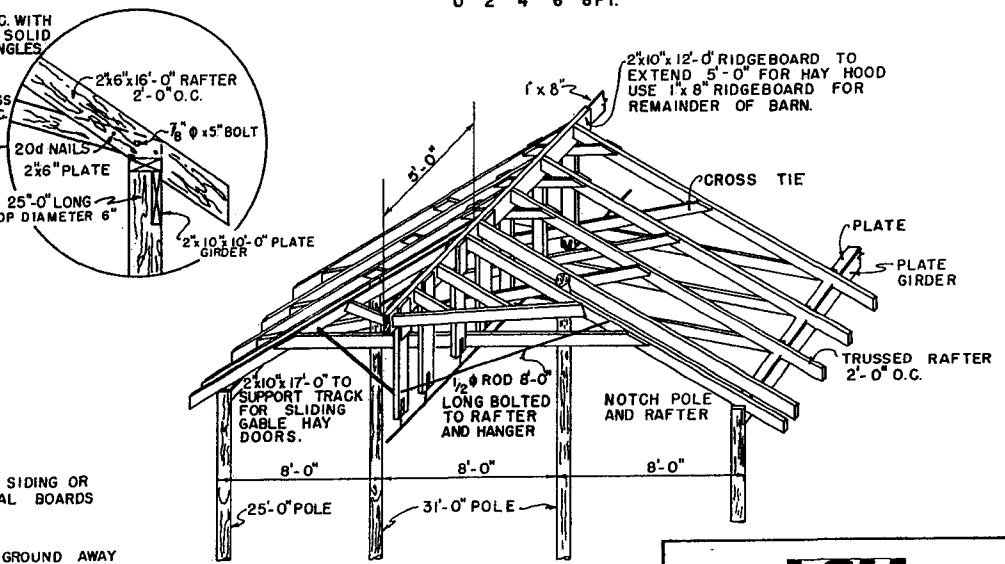
**DETAIL OF CONNECTION OF CROSS TIE AND KNEE BRACE TO RAFTER**



**SECTION A - A  
(SEE FLOOR PLAN)  
SCALE 0 2 4 6 FT.**



**DETAIL OF SIDE FRAMING  
SCALE 0 2 4 6 8 FT.**



**DETAIL OF END FRAMING  
(SHOWS HAY HOOD CONSTRUCTION)  
SCALE 0 2 4 6 FT.**



## Disclaimer

This site makes available conceptual plans that can be helpful in developing building layouts and selecting equipment for various agricultural applications. These plans do not necessarily represent the most current technology or construction codes. They are not construction plans and do not replace the need for competent design assistance in developing safe, legal and well-functioning agricultural building system. The LSU Agriculture Center, the Mid-West Plan Service, the United States Department of Agriculture and none of the cooperating land-grant universities warranty these plans.